



# AnySite GroundView Data Update Notes

This document contains information for installing the GroundView 2010 quarterly data update for AnySite®.

## Table of Contents

- ◆ **Extracting Data** ..... 1
- ◆ **Installing the License** ..... 2
- ◆ **Importing the ART File** ..... 3
- ◆ **Known Issues** ..... 3
- ◆ **Known Issues with Windows 7** ..... 3

Americas:  
 Phone: 518 285 6000  
 Fax: 518 285 6070  
 Sales: 800 327 8627  
 Government Sales: 800 619 2333  
 Technical Support: 518 285 7283  
[www.pbinsight.com](http://www.pbinsight.com)

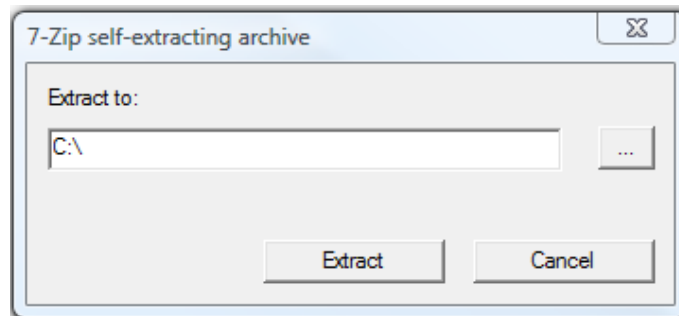
© 2010 Pitney Bowes Software Inc. All rights reserved. Pitney Bowes Business Insight, MapInfo, Group 1 Software and AnySite are trademarks of Pitney Bowes Business Insight, a division of Pitney Bowes Software and/or its affiliates.

October 2010

## Extracting Data

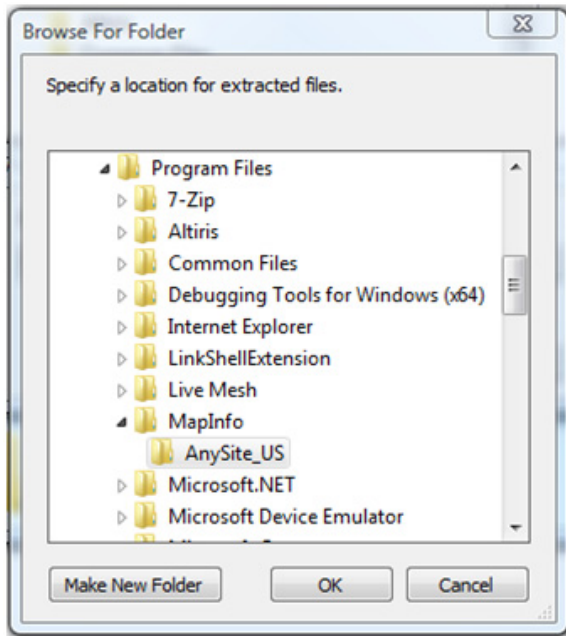
Running the self-extracting file copies the data files to the ASDE folder, the data dictionary (Variable List GroundView Q# 2010.xls) file to the Documentation folder, and the GroundView ART file to the ART Files folder.

1. Insert the MapInfo AnySite GroundView Data Update CD.  
 (If the installation does not automatically start, navigate to the CD drive in Windows Explorer and double-click **AS881\_GV10Q#.exe**)  
 A self-extractor window appears.



2. Click the **Browse** button .

The Browse for Folder window appears.



3. Locate the directory where you have AnySite US installed (for example, C:\Program Files\MapInfo\AnySite\_US).
4. Click **OK** to return the self-extractor window, then click **Extract**.
5. If you are an existing customer who is updating GroundView data, continue to [Importing the ART File on page 3](#). If you are a new customer who is installing GroundView for the first time, continue to the next section below, [Installing the License](#).

## Installing the License

If you are a new customer, you must install the license file prior to importing the GroundView ART file.

1. Place the License CD in the DVD drive.

If the installation does not automatically start, click **Run** from the Microsoft Start menu, browse to the DVD drive, and select **INSTALL.EXE**.

2. In the License Installer screen click **Install** to copy the license file to your AnySite ASDE folder (ensure the path is correct for your installation C:\Program Files\MapInfo\AnySite\_US\Data\ASDE is the default location).
3. A notice dialog appears. Click **OK** when prompted that the installation is complete.

Once you have installed the license file, you must point to it using AnySite Configurator:

1. Open the AnySite Configurator.
2. From the **Tools** menu, select **ASDE Settings**.
3. In the License Path text area, click the **Browse** button and point to the new license file (for example, C:\Program Files\MapInfo\AnySite\_US\Data\ASDE\[NAME].lic).
4. Click **OK**.

## Importing the ART File

After extracting the GroundView data, import the ART file. To do this:

1. Launch the Configurator.
2. From the **Tools** Menu, select **Import Preferences**.
3. In the Import Preferences dialog:
  - a. From the Look in list, select the ART Files folder where AnySite is installed. The default location is C:\Program Files\MapInfo\AnySite\_US\ART Files.
  - b. From the list of files, select **GROUNDVIEW Reports.art**.
  - c. Click **Open**.
4. In the Select Preferences to Import dialog, select all of the reports in the list and click **OK**.  
Choose to overwrite the existing files if prompted.

Your data update or installation is now complete. Restart AnySite to begin working with the data.

## Known Issues

### Zeros in GroundView Growth Report

All % change variables for the 8th quarter will remain zero due to the formulas (for example, the formula Seasonal Household % Chg. Cum to Current-7 (USGVA.INSEASC7 -USGVA.INSEASC7 /USGVA.INSEASC7 will always be zero).

## Known Issues with Windows 7

### Viewing RTF Reports Requires Microsoft Word Viewer

You cannot use the default WordPad application to view generated reports in RTF format. For proper viewing of reports in AnySite US, ensure that you have either Microsoft Word Viewer or Microsoft Word installed on your machine.

You can download Microsoft Word Viewer from the given below link :-

<http://www.microsoft.com/downloads/en/details.aspx?FamilyID=3657ce88-7cfa-457a-9aec-f4f827f20cac&displaylang=en>