



AnySite®

Version 8.8

INSTALL GUIDE

Information in this document is subject to change without notice and does not represent a commitment on the part of the vendor or its representatives. No part of this document may be reproduced or transmitted in any form or by any means, electronic or mechanical, including photocopying, without the written permission of Pitney Bowes Software Inc., One Global View, Troy, New York 12180-8399.

©2008-2010 Pitney Bowes Software Inc. All rights reserved. MapInfo, Group 1 Software, and AnySite are trademarks of Pitney Bowes Software Inc. All other marks and trademarks are property of their respective holders.

United States:

Phone: 518.285.6000

Fax: 518.285.6070

Sales: 800.327.8627

Government Sales: 800.619.2333

Technical Support: 518.285.7283

Technical Support Fax: 518.285.6080

pbinsight.com

Canada:

Phone: 416.594.5200

Fax: 416.594.5201

Sales: 800.268.3282

Technical Support: 518.285.7283

Technical Support Fax: 518.285.6080

pbinsight.ca

Contact information for all Pitney Bowes Software Inc. offices is located at: <http://www.pbinsight.com/about/contact-us>.

September 2010

Table of Contents

Chapter 1: Introduction	5
Product Inventory	6
About this Guide	6
Conventions	6
Chapter 2: Before You Begin	9
Permissions	10
System Requirements	10
Default Install Path	10
Time/Space Considerations	10
Installation Scenarios	11
Chapter 3: Installing	13
Evaluation Version Users	14
Installing to a Local Machine (Single User)	14
Complete Installation	17
Custom Installation	19
Installing to a Network (Shared by Multiple Users)	21
Complete Network Installation	25
Custom Network Installation	27
Installing AnySite on Windows 7	30
Installing the .NET Framework	31
Installing your Data License File	34
Installing the AnySite Client	34
Launching the AnySite Client Setup Wizard	35
Final System Configuration	37
Launching the Configurator	37
Importing Repository Transfer (ART) Files for your Data	38
Cataloging System Data if Stored to a Non-Default Location	41

Chapter 4: Starting AnySite	45
Logging into and Launching AnySite	46
Handling Data Not Found Messages	46
Default Locations for Data	47
Chapter 5: Upgrading Your Current Installation	49
Backing-Up Custom Files	50
Are you upgrading from AnySite 8.7.x?	50
Upgrading AnySite	51
Updating Reports and Thematics	52
Updating Standard Reports and Thematics	52
Updating your Custom Reports and Thematics	53
Upgrading the AnySite Client	55
Chapter 6: Uninstalling	57
Uninstalling the AnySite Application	58
Uninstalling the AnySite Client	58
Appendix A: Performance Tuning a Network Installation	59
Network Speed	60
Virus Scanner Software Settings	60

Introduction

Welcome to AnySite. System Administrators installing AnySite need to read this entire document for a successful installation.

AnySite helps you to analyze the relationship between store performance and market trade area demographic characteristics. AnySite lets you integrate the specific data you need from various sources, so that you can connect, retrieve, report on, and map any information from your proprietary database to analyze trade area data.

Access to data is controlled using account permissions set through the AnySite Configurator tool, which is installed with AnySite. This allows an AnySite Administrator to restrict access to sensitive data.

For information on setting system preferences and defaults through AnySite's Configurator tool, refer to the *AnySite Reference* after installing AnySite.

In this chapter:

- ◆ **Product Inventory**6
- ◆ **About this Guide**6

Product Inventory

Your copy of AnySite installs the following to your system:

- AnySite – Server and client software.
- Data Manager tool – For importing and exporting data from the AnySite Data Engine.
- Configurator tool – For managing AnySite system settings.
- Data – Data purchased with AnySite for market and site analysis.
- Tutorial data – Sample data provided to follow along with the AnySite tutorial.
- Install Guide – This document, which provides installation and system configuration instructions.
- Reference Guide – Provides a reference for working with AnySite, and the Data Manager and Configurator tools.

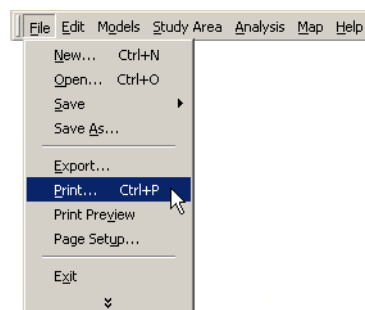
About this Guide

This guide is organized as follows:

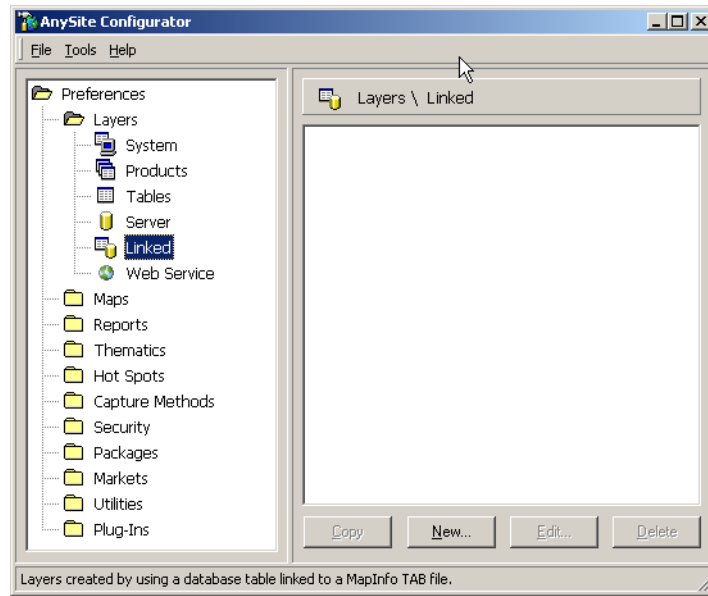
- **Chapter 2: Before You Begin** – Requirements and system setup needed.
- **Chapter 3: Installing** – Instructions for installing the AnySite Application.
- **Chapter 4: Starting AnySite** – Instructions on how to log in to and launch AnySite.
- **Chapter 5: Upgrading Your Current Installation** – Instructions on how to upgrade your existing AnySite installation to this new release.
- **Chapter 6: Uninstalling** – Instructions on how to remove AnySite from your system.

Conventions

This guide may provide full paths to menu commands. For example, **File > Print** is the same as “on the **File** menu, click **Print**”.



When referring to Configurator preferences the convention of **Preferences > Layers > Linked** is the same as “in the **Preferences** pane, click **Layers**, and then click **Linked**”.



Before You Begin

When installing AnySite, it is important to decide your installation location, and deployment environment.

Note If you install AnySite incorrectly, you may need to remove the application from your computer and re-install it to fix any problems.

In this chapter:

- ♦ **Permissions**10
- ♦ **System Requirements**10
- ♦ **Default Install Path**10
- ♦ **Time/Space Considerations**10
- ♦ **Installation Scenarios**11

Permissions

Administrative rights to the program files directory are required for installation.

Once installed, users need read/write/modify rights to the AnySite.ini and AnySite.mdb files, which are located within the AnySite application directory. Give users read/write/modify rights to the entire AnySite application directory.

System Requirements

Operating System:	<ul style="list-style-type: none">• Windows 7• Windows XP Service Pack 2 or higher• Windows 2000 with Service Pack 4 or higher• Windows Server 2003 (Standard or Enterprise) Service Pack 1
Hardware:	<ul style="list-style-type: none">• Pentium IV Processor 1.x GHz or better, with 512MB of RAM (1GB or better recommended)• 15-inch monitor, with graphic accelerator card, 16 bit color or greater. Minimum of 800x600 resolution is required.
Hard Disk Space:	Dependent on the data purchased. 7GB with State data to 14+ GB with National data.
Software:	Microsoft Word 2002, 2003, or later (recommended for viewing reports)

Default Install Path

The default install path is C:\Program Files\MapInfo\AnySite_XX, where XX is a two-digit country code, such as XX.

Time/Space Considerations

The AnySite install wizard installs both the AnySite application and data (streets, demographics, and geocoder for example). The length of time for the install will range from 1-4 hours depending on the speed of your media drive and file transfer across a network. The installation of AnySite cannot be stopped and restarted at a later date. Schedule enough time prior to beginning the install process.

The following chart provides an estimation of size needed when installing AnySite and its corresponding data. The footprint will change depending upon the geography purchased.

Name	Approximate Disk Space Needed
AnySite Program	500 MB
Single State Data	7 GB
Region (6 states) Data	11 GB
National Data	14 GB

You have the option to install the data to a location separate from the AnySite application. The most common scenario is to install the application and data to the same machine.

Installation Scenarios

During the install you have the option to perform a Single or a Shared setup type. A Single setup type is for a local installation, where a single user installs AnySite and the AnySite Client to a local machine. A Shared setup type is for a network installation where multiple users on a network will access AnySite.

For questions regarding installation scenarios please contact AnySite technical support via email at anysite.support@mapinfo.com or 1.800.552.2511 (option 1).

Local Installation (Single User)

A local installation installs and runs AnySite on a single machine. Choose a local installation if only a single user is going to access AnySite.

For optimal performance of AnySite on a local machine, install the entire application: both server and client software.

Network Installation (Shared by Multiple Users)

A network installation installs AnySite (executable and all associated files) onto a network of machines. Choose a network installation if multiple users are going to access AnySite. Install AnySite from the console of the server where AnySite will reside, and install the AnySite Client onto each user's local machine where they will run AnySite from.

If you are installing to the network from a local machine, you must have a mapped drive to your network location. The mapped drive is only required for the installation process. UNC (Universal Naming Convention) paths may be used to run the application from a network. Refer to **Final System Configuration in Chapter 3 on page 37**.

Installing

To successfully install AnySite, read this entire chapter before beginning. Refer to **Before You Begin in Chapter 2 on page 9** for pre-installation requirements and planning.

During the installation procedure, you must make some decisions about your installation. Please read these instructions before installing, so that your installation runs smoothly.

Follow the directions for the **Final System Configuration on page 37** after completing the main installation. These steps are required for every installation and will ensure that your AnySite installation is successful.

In this chapter:

- ◆ **Evaluation Version Users**14
- ◆ **Installing to a Local Machine (Single User)**14
- ◆ **Installing to a Network (Shared by Multiple Users)**.....21
- ◆ **Installing AnySite on Windows 7**30
- ◆ **Installing the .NET Framework**31
- ◆ **Installing your Data License File.**34
- ◆ **Installing the AnySite Client**34
- ◆ **Final System Configuration.**37

Evaluation Version Users

If you currently have an evaluation version of AnySite installed on your machine, you must uninstall the evaluation version prior to installing the full version.

Installing to a Local Machine (Single User)

To Install AnySite onto a local machine:

1. Place the AnySite Installation DVD in the media drive.

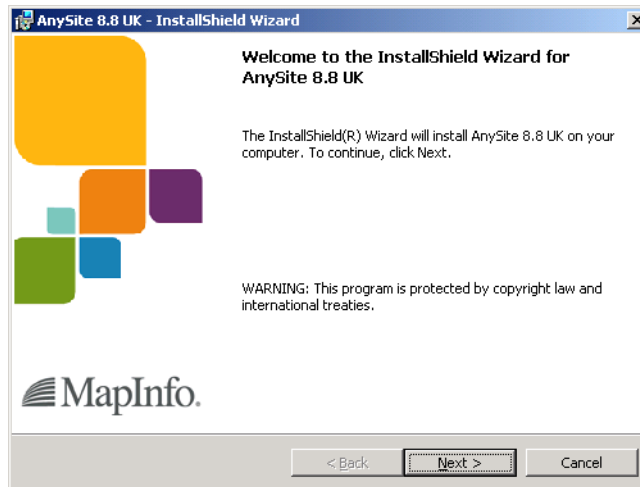
Note If you are a Windows 7 user, see [Installing AnySite on Windows 7 on page 30](#) for installation instructions that are specific to that operating system.

If the installation does not automatically start, click **Run** from the Microsoft Start menu, and click the **Browse** button. Go to the media drive and select **Launch.exe**.

Select **Install**, and then select **Install AnySite**.



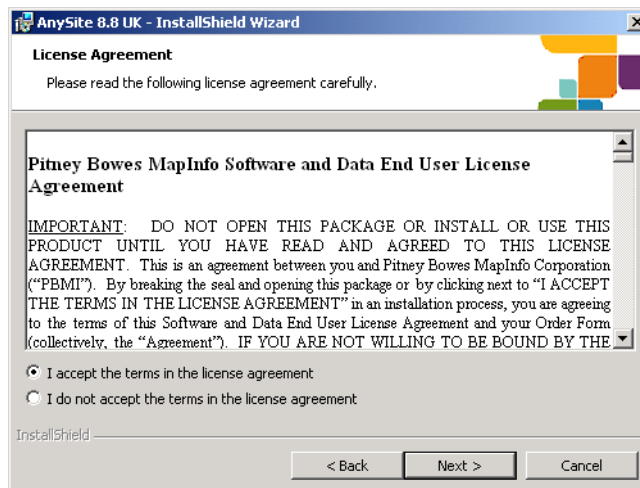
2. The Welcome screen appears.
Click **Next** to continue.



3. The License Agreement screen appears.

Carefully read the License Agreement. Select **I accept the terms in the license agreement** to accept the terms of the agreement.

Click **Next** to continue the installation process.

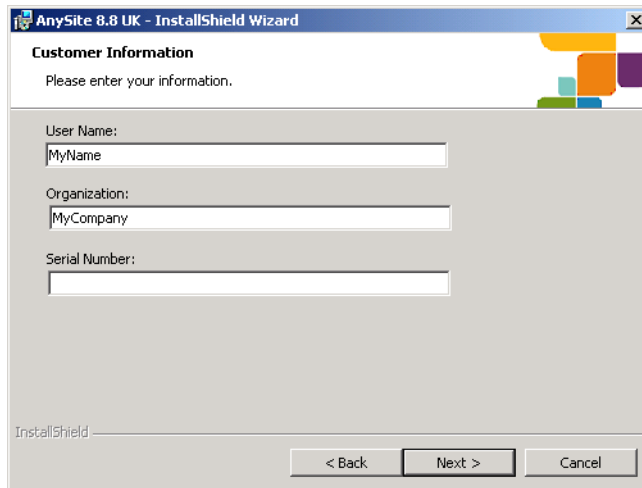


4. The Customer Information screen appears.

Enter your name, organization name, and serial number (all three fields are required).

The Serial Number is located on the outside of the AnySite box. This number is required for the installation to continue. If you are unable to locate your serial number, contact your sales representative for assistance (for contact information, see [Installation Scenarios in Chapter 2 on page 11](#)).

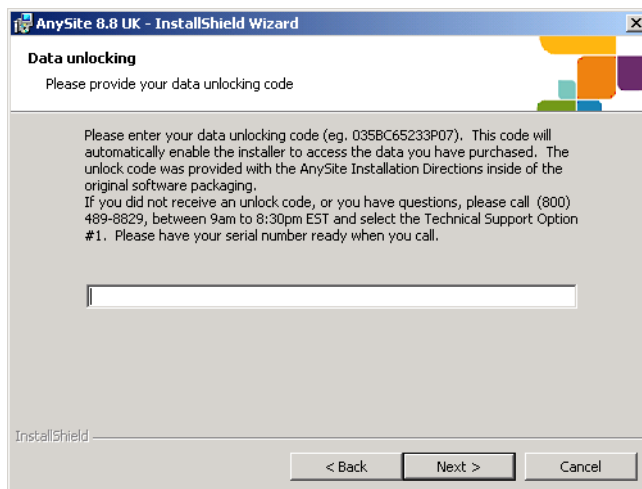
Click **Next** to continue.



5. The Data Unlocking screen appears.

Enter your Unlocking Code. The unlocking code is included in the *Unlock Code and Serial Number* document included in the software box. The serial number and unlock code are connected to each other, if you receive a message stating your unlock code is invalid, recheck your serial number to see if it was keyed in properly.

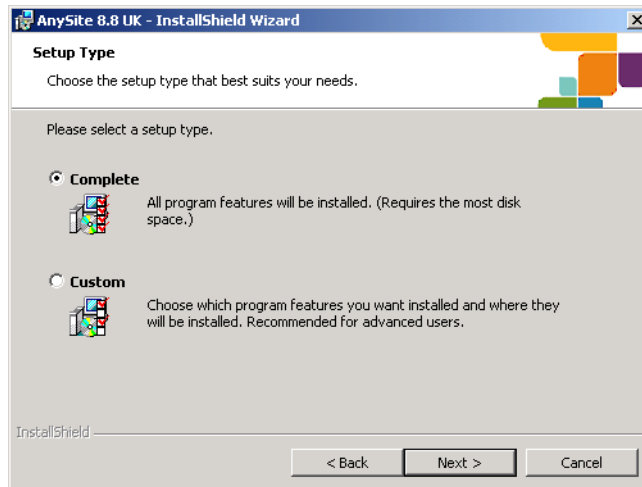
Click **Next** to continue.



6. The Setup Type screen appears.

Select Complete or Custom, and then Click **Next** to continue.

- Complete installs AnySite and all of its components.
- Custom lets you select which program features and data to install, and lets you install them to different locations either on your hard drive or on a network drive.

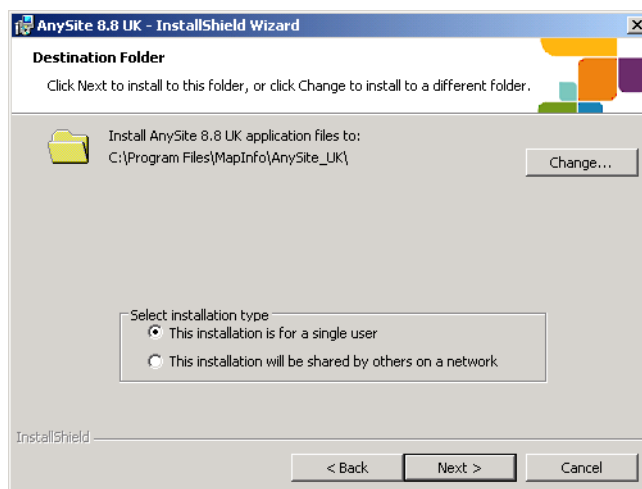


If you chose Complete, refer to [Complete Installation](#) for further instructions. If you chose Custom, refer to [Custom Installation on page 19](#) for further instructions.

Complete Installation

To continue with a Complete installation:

1. The Destination Folder screen appears after clicking **Complete** in the Setup screen. Choose **This installation is for a single user** to install AnySite and the AnySite Client to a local machine. If you would like to change the default installation location, click **Change** to browse to a different location. Click **Next** to continue.

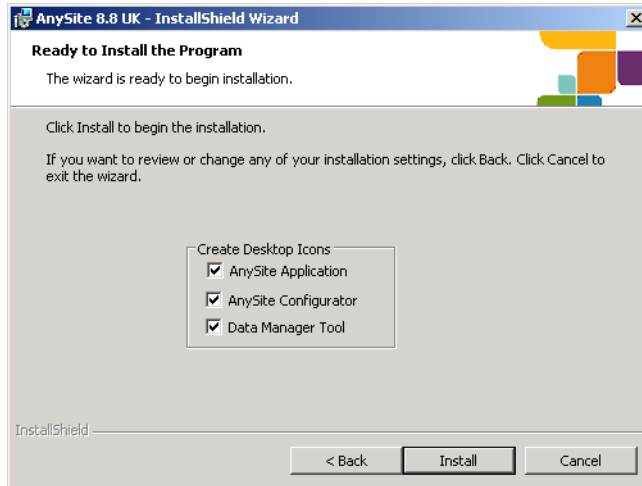


Installing to a Local Machine (Single User)

2. The Ready to Install the Program screen appears.

If you chose to deselect desktop icons, then you can launch these features from the Microsoft Start menu by clicking Programs > MapInfo > AnySite.

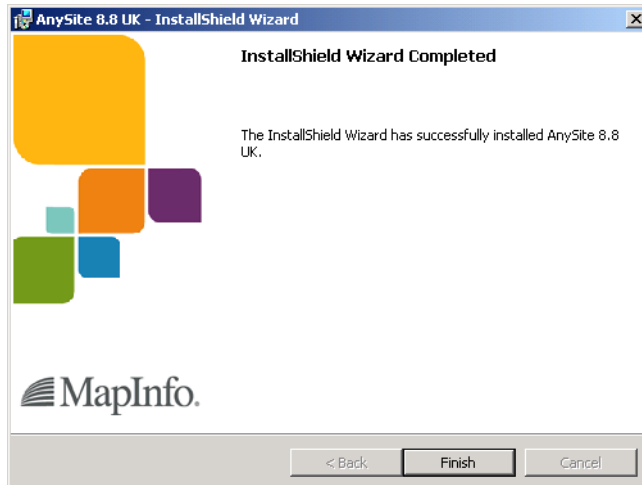
Click **Install** to begin the Installation process.



Note If the .NET Framework License Agreement screen appears, then you do not have a compatible version of Microsoft .NET Framework installed. To complete your installation, proceed to [Installing the .NET Framework on page 31](#).

3. The Installation Complete screen appears.

Click **Finish** to close the AnySite Installation wizard.



4. Complete the installation by rebooting the system.

After rebooting, continue to [Installing your Data License File on page 34](#).

Custom Installation

This section continues from **step 6** in **Installing to a Local Machine (Single User)** after choosing Custom in the Setup screen. The options for a Custom Setup include application files and data.

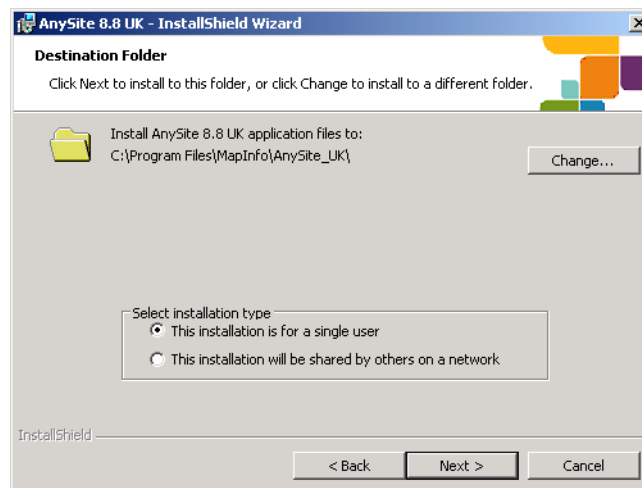
You will have the option to select to install AnySite features, such as data, to your local hard drive or to a network drive. If installing to a network drive, then map the drive first. You may also choose not to install a feature.

Note Installing features to a network drive is **not** the same as installing AnySite on a network to be shared by multiple users.

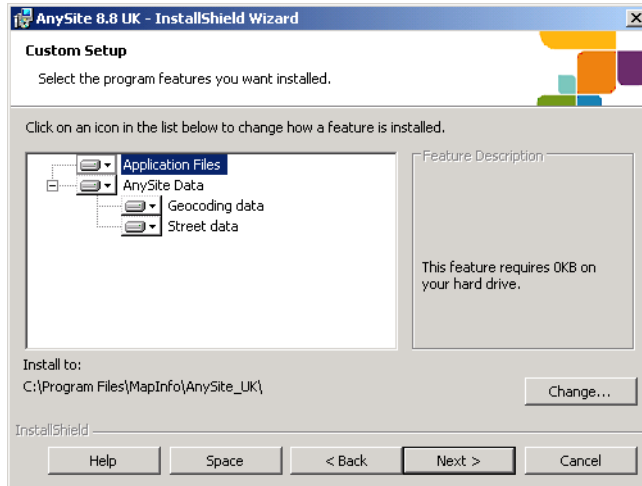
For optimal performance on a local machine, install everything to the local machine.

To continue with a Custom installation:

1. The Destination Folder screen appears after clicking **Custom** in the Setup screen. Choose **This installation is for a single user** to install AnySite and the AnySite Client to the local machine. If you would like to change the default installation location, click **Change** to browse to a different location. Click **Next** to continue.



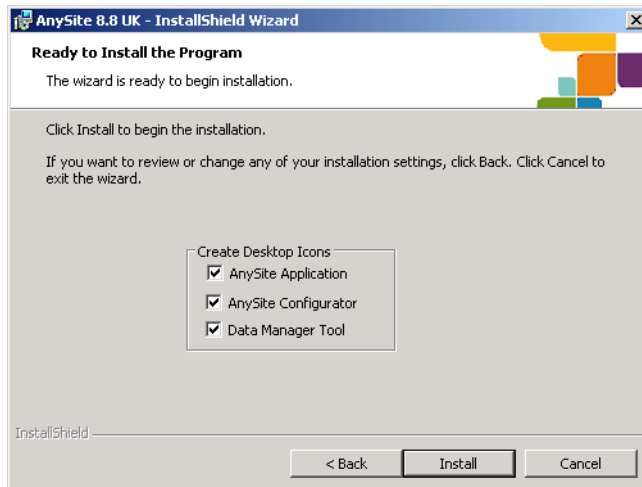
2. The Custom Setup screen appears. By default, the wizard installs all features. To deselect a feature, click the feature icon and select **This feature will not be available**. Only selected features install. Features install to your local hard drive in the folder indicated. To specify a different folder, click **Change**. Click **Next** to continue.



3. The Ready to Install the Program screen appears.

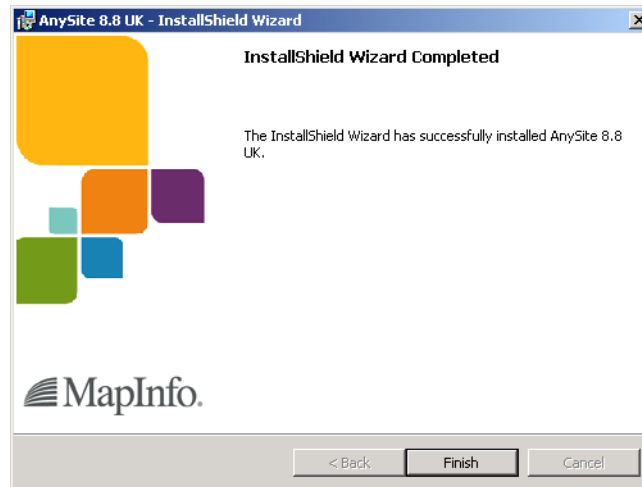
If you chose to deselect desktop icons, then you can launch these features from the Microsoft Start menu by clicking Programs > MapInfo > AnySite.

Click **Install** to begin the Installation process.



Note If the .NET Framework License Agreement screen appears, then you do not have a compatible version of Microsoft .NET Framework installed. To complete your installation, proceed to [Installing the .NET Framework on page 31](#).

4. The Installation Complete screen appears.
Click **Finish** to close the AnySite Installation wizard.



5. Complete the installation by rebooting the system.

After rebooting, continue to [Installing your Data License File on page 34](#).

Installing to a Network (Shared by Multiple Users)

In a shared setup, you install AnySite to a single machine in a network of connected machines. You then install the AnySite Client on to those machines in the network that access AnySite.

This section describes how to install AnySite. After completing the instructions in this section, you will install the AnySite Client on to **all** machines that will access AnySite.

Note There is an option to install the AnySite Client as part of this main installation if the machine used to install to the network location will also be used to run AnySite.

You must have a mapped drive to your network location and full write permission to the drive to install the AnySite Client. The mapped drive is only required for the installation process.

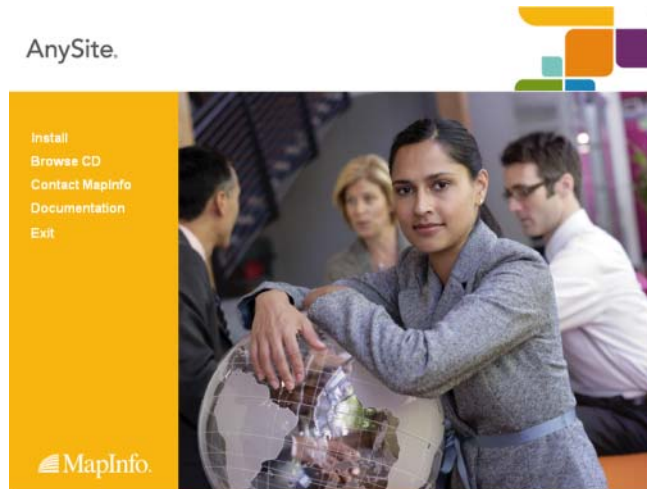
To Install AnySite on a network:

1. Place the AnySite Installation DVD in the media drive.

Note If you are a Windows 7 user, see [Installing AnySite on Windows 7 on page 30](#) for installation instructions that are specific to that operating system.

If the installation does not automatically start, click **Run** from the Microsoft Start menu, and click the **Browse** button. Go to the media drive and select **Launch.exe**.

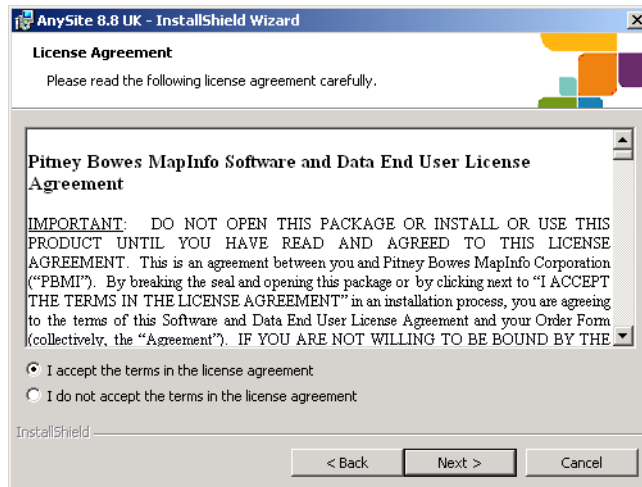
Select **Install**, and then select **Install AnySite**.



2. The Welcome screen appears.
Click **Next** to continue.



3. The License Agreement screen appears.
Carefully read the License Agreement. Select **I accept the terms in the license agreement** to accept the terms of the agreement.
Click **Next** to continue the installation process.

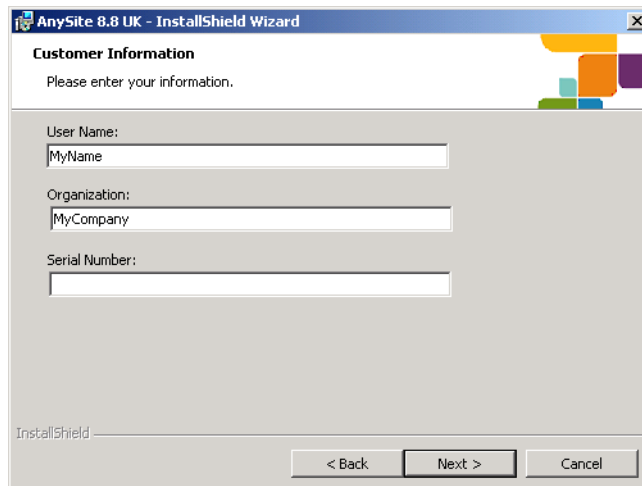


4. The Customer Information screen appears.

Enter your name, organization name, and serial number (all three fields are required).

The Serial Number is located on the outside of the AnySite box. This number is required for the installation to continue. If you are unable to locate your serial number, contact your sales representative for assistance (for contact information, see [Installation Scenarios in Chapter 2 on page 11](#)).

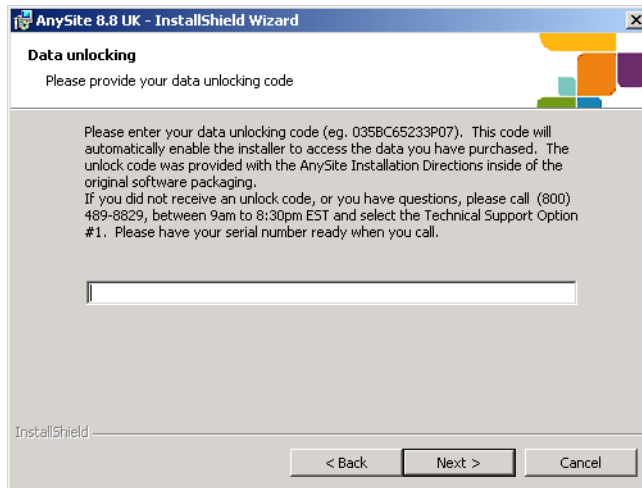
Click **Next** to continue.



5. The Data Unlocking screen appears.

Enter your Unlocking Code. The unlocking code is included in the *Unlock Code and Serial Number* document included in the software box. The serial number and unlock code are connected to each other, if you receive a message stating your unlock code is invalid, recheck your serial number to see if it was keyed in properly.

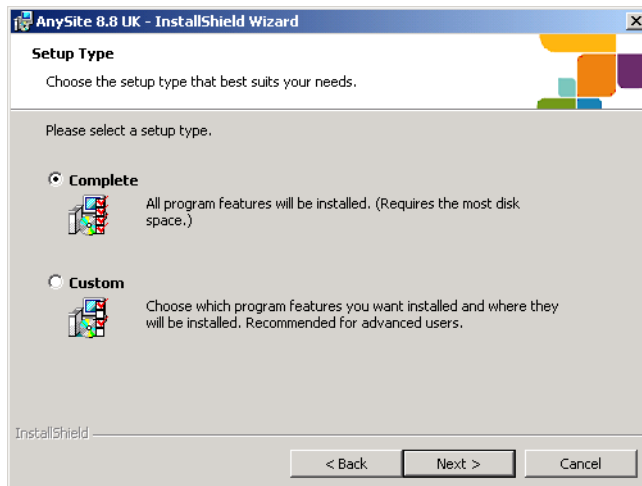
Click **Next** to continue.



6. The Setup Type screen appears.

Select Complete or Custom, and then click **Next** to continue.

- Complete installs AnySite and all of its components.
- Custom lets you select which program features and data to install, and lets you install them to different locations either on your hard drive or on a network drive.



If you chose Complete, refer to [Complete Network Installation on page 25](#) for further instructions.

If you chose Customer, refer to [Custom Network Installation on page 27](#) for further instructions.

Complete Network Installation

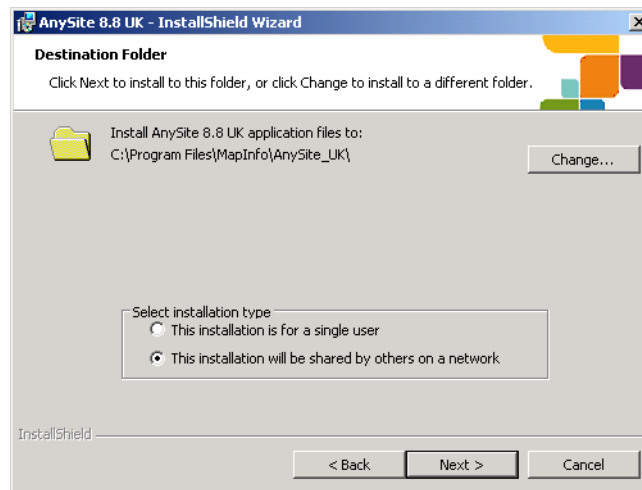
This section continues from **step 6** in **Installing to a Network (Shared by Multiple Users)** on **page 21**, after choosing Complete in the Setup screen.

To continue with a complete installation:

1. The Destination Folder screen appears.

Choose **This installation will be shared by others on a network** and do one of the following:

- Accept the default destination folder by clicking **Next** to install on this local machine.
- Change the destination folder by clicking **Change** to install to a machine on the network by selecting a mapped drive (you will require full write permission to the location). The Change Current Destination Folder screen appears to select a location on the network.

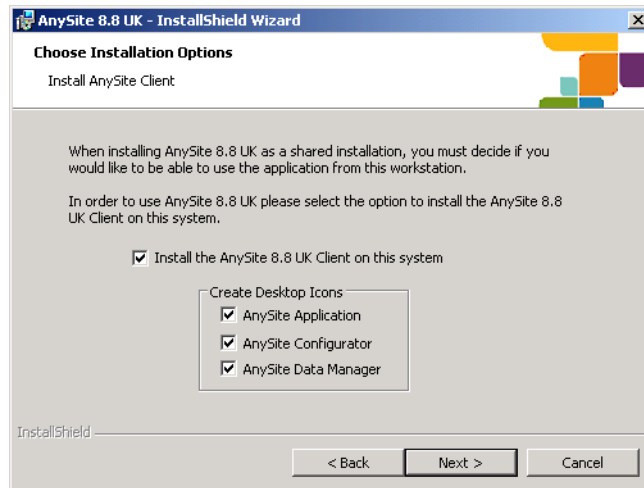


2. The Choose Installation Options screen appears.

Deselect the AnySite Client option if you do not want to install it on this machine.

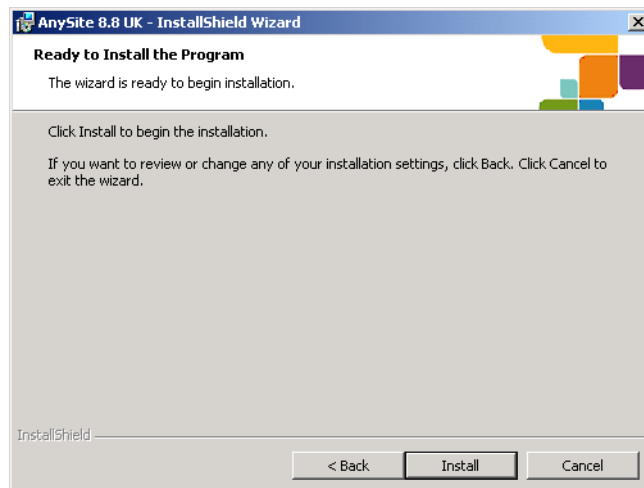
Deselect the desktop icon options if you do not want to install them. You can launch these features from the Microsoft Start menu by clicking Programs > MapInfo > AnySite.

Click **Next** to continue.



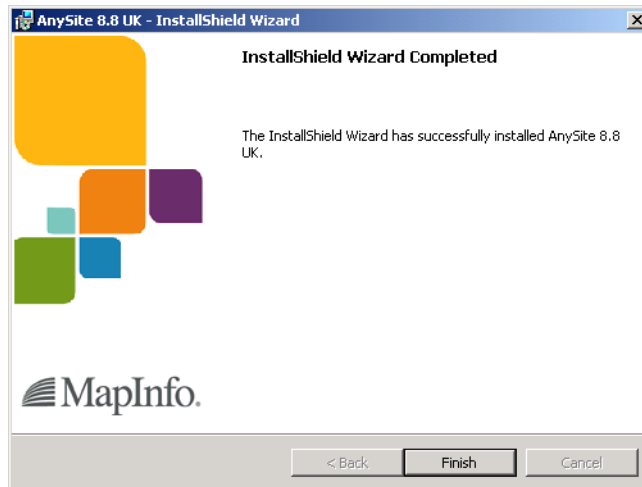
Note If installing to Windows Server 2003, then install the AnySite Client separately as described in [Installing the AnySite Client on page 34](#).

3. The Ready to Install the Program screen appears.
Click **Install** to begin the Installation process.



Note If the .NET Framework License Agreement screen appears, then you do not have a compatible version of Microsoft .NET Framework installed. To complete your installation, proceed to [Installing the .NET Framework on page 31](#).

4. The Installation Complete screen appears.
Click **Finish** to close the AnySite Installation wizard.



5. Complete the installation by rebooting the system.

You must reboot the system and then continue to [Installing your Data License File on page 34](#).

Custom Network Installation

This section continues from [step 6](#) in [Installing to a Network \(Shared by Multiple Users\) on page 21](#), after choosing Custom in the Setup screen. The options for a Custom Setup include application files and data packages.

When you select a feature in [step 3](#) of the following procedure, a menu appears allowing you to choose to install the feature and its sub-features to your local hard drive or a network drive. If installing to a network drive, then map the drive for the installation.

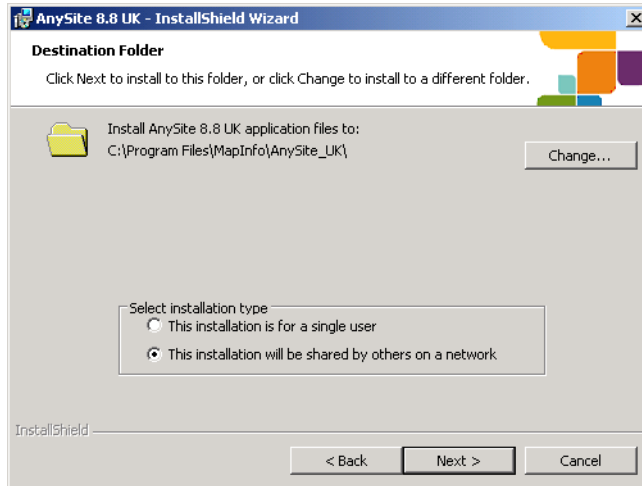
Note Installing components to a network drive is **not** the same as installing AnySite on a network to be shared by multiple users.

To continue with a Custom installation:

1. The Destination Folder screen appears.

Choose **This installation will be shared by others on a network** and do one of the following:

- Accept the default destination folder by clicking **Next** to install on this local machine.
- Change the destination folder by clicking **Change** to install to a machine on the network by selecting a mapped drive (you will require full write permission to the location). The Change Current Destination Folder screen appears to select a location on the network.

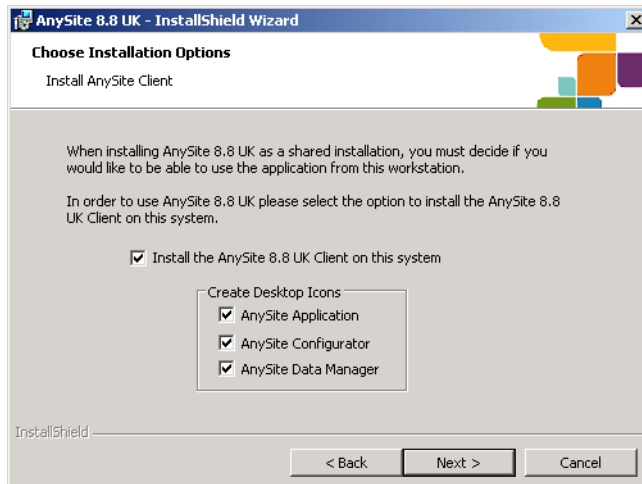


2. The Choose Installation Options screen appears.

Deselect the AnySite Client option if you do not want to install it on this machine.

Deselect the desktop icon options if you do not want to install them. You can launch these features from the Microsoft Start menu by clicking Programs > MapInfo > AnySite.

Click **Next** to continue.



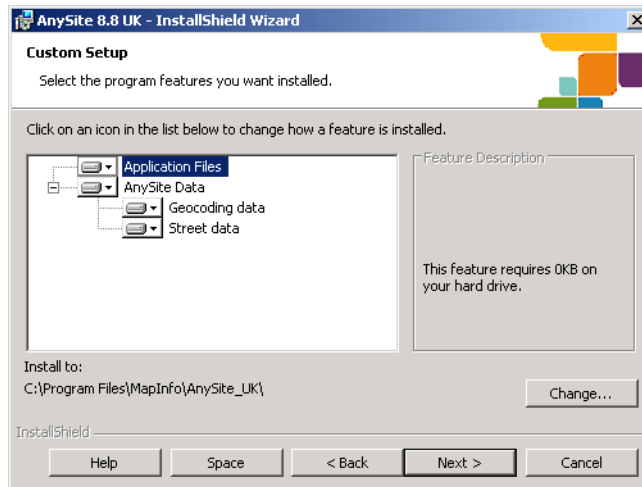
Note If installing to Windows Server 2003, then install the AnySite Client separately as described in [Installing the AnySite Client on page 34](#).

3. The Custom Setup screen appears.

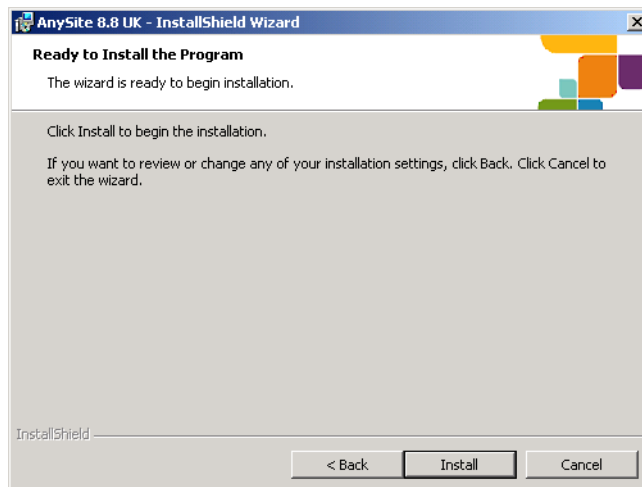
By default, the wizard installs all features. To deselect a feature, click the feature icon and select **This feature will not be available**. Only selected features install.

Features install on your local hard drive in the folder indicated. To specify a different folder, click **Change**.

Click **Next** after the custom features have been selected.



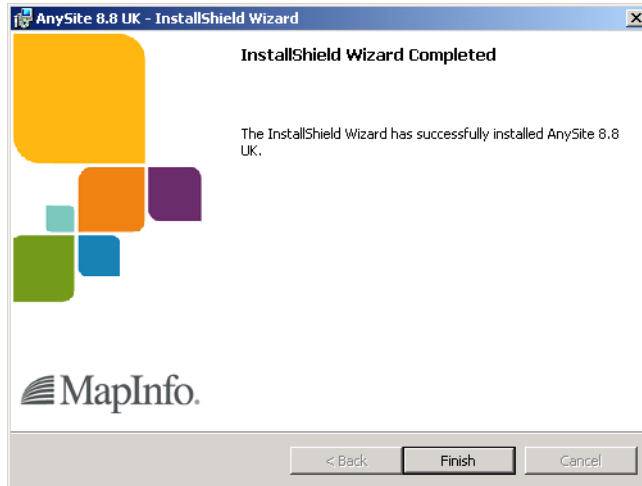
4. The Ready to Install the Program screen appears.
Click **Install** to begin the installation process.



Note If the .NET Framework License Agreement screen appears, then you do not have a compatible version of Microsoft .NET Framework installed. To complete your installation, proceed to [Installing the .NET Framework on page 31](#).

5. The Installation Complete screen appears.

Click **Finish** to close the AnySite Installation wizard.



6. Complete the installation by rebooting the system.

You must reboot the system and then continue to [Installing your Data License File on page 34](#).

Installing AnySite on Windows 7

Installing AnySite on Windows 7 requires you to initiate the installer in a different way than is required for other supported Windows operating systems.

To install AnySite US on Windows 7:

1. Verify that you have administrative rights to the machine.

- Place the AnySite Installation DVD in the DVD drive. If the DVD autoruns, the following screen appears:



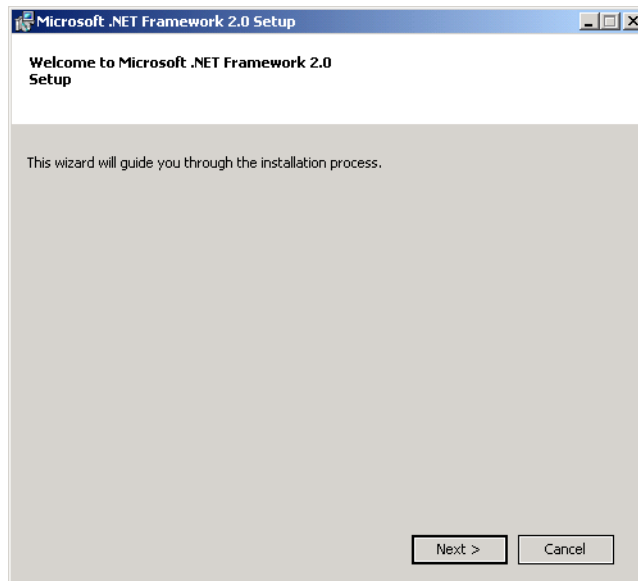
- Do not click **Install** on this screen. Instead, click **Exit**.
 - In your file system, locate the `setup.exe` file at the root of the DVD directory.
 - Right-click on the `setup.exe` file.
 - Select **Run as Administrator**.
 - Continue with the remaining installation steps ([step 2 on page 14](#) for installing to a local machine, or [step 2 on page 22](#) for installing to a network).
- Once the install is complete, you can run the application with typical user rights.

Installing the .NET Framework

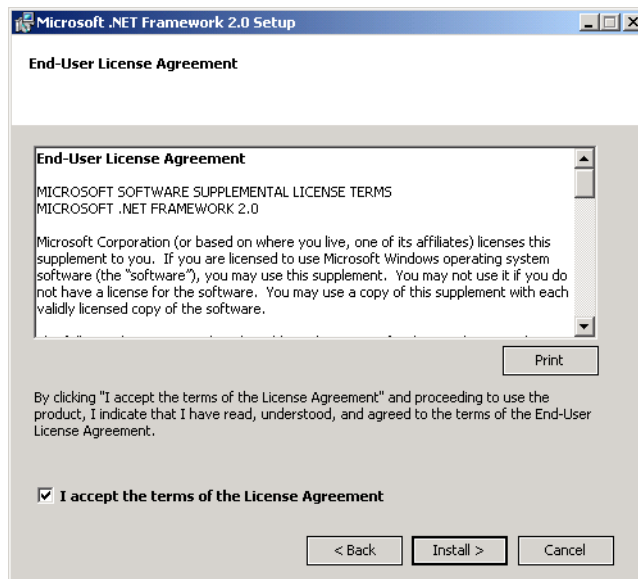
This part of the installation occurs when you do not already have a compatible version of Microsoft .NET framework installed on your machine. Microsoft .NET Framework version 2.0 is required to run AnySite. (For information about the Microsoft.NET framework, see www.microsoft.com/net.)

Installing the .NET Framework

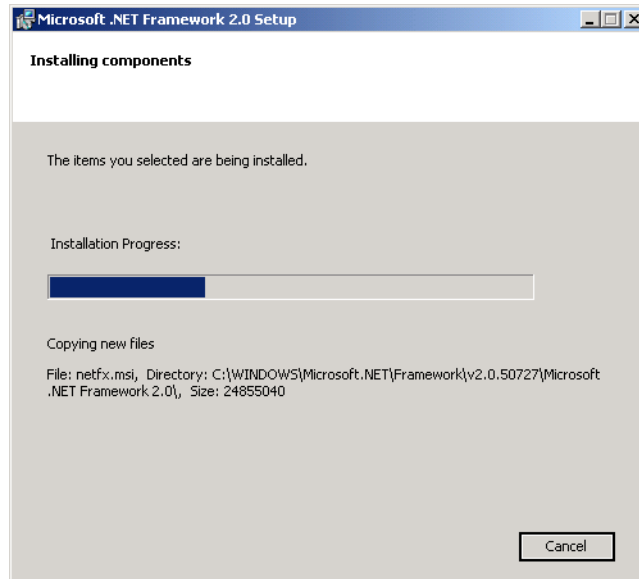
1. The Welcome to Microsoft .NET Framework 2.0 Setup dialog appears.
Click **Next** to continue.



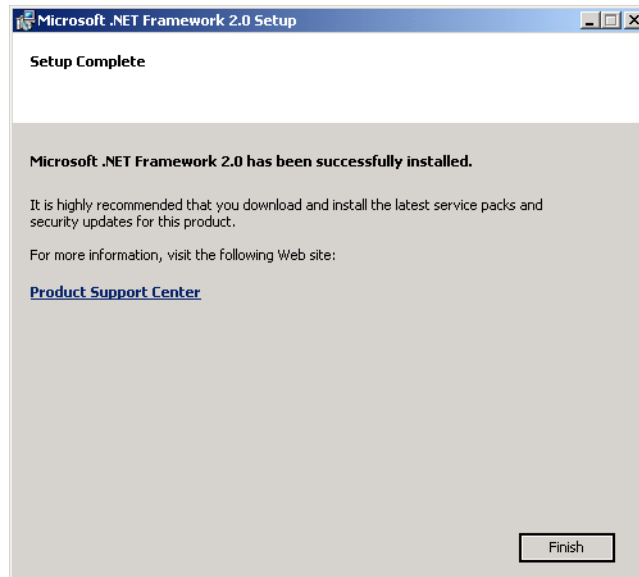
2. The License Agreement screen appears.
Carefully read the License Agreement. Select "I accept" to agree to the terms.
Click **Install** to continue the installation process.



The Installing .net screen appears with a progress bar indicating the status of the installation process.



3. The Installation Complete screen appears.
Click **Finish** to complete the .NET installation.



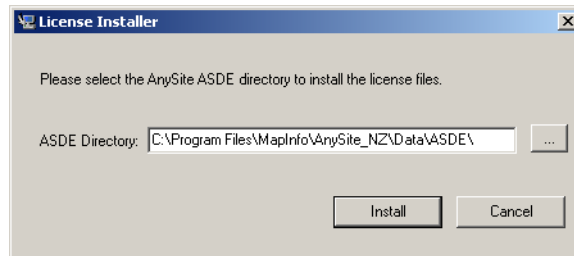
You must reboot the system and then continue to [Installing your Data License File on page 34](#).

Installing your Data License File

A unique license ships with your copy of AnySite to give you access to the data you purchased. This license is on a license CD that is included with your AnySite media.

To Install the data license file:

1. Place the License CD in the media drive.
If the installation does not automatically start, click **Run** from the Microsoft Start menu, and click the **Browse** button. Go to the media drive and select **INSTALL.EXE**.
2. In the License Installer screen click **Install** to copy the license file to the AnySite installation location (C:\Program Files\MapInfo\AnySite_XX\Data\ASDE for example).



3. A Notice dialog appears.
Click **OK** when prompted that the installation is complete.

If you selected a single user setup installation, continue to [Final System Configuration on page 37](#).

If you select a multiple user setup installation or you installed to the Windows 2003 operating system, continue to [Installing the AnySite Client](#) instructions.

Installing the AnySite Client

The AnySite Client allows a user to access the AnySite application.

Single User Installations:

If you selected a Single setup type installation on Windows XP, then you do not have to install the AnySite Client. The Client installs by default for you. Skip to [Final System Configuration on page 37](#).

If you installed on Windows 2003 server then you must install the Client. Follow the instructions in the next section [Launching the AnySite Client Setup Wizard on page 35](#).

Multiple User Installations:

If you selected a Shared (network) setup type, so that multiple users can access AnySite, then install the AnySite Client on each machine that will access AnySite.

The AnySite Client Installer is a ClientSetup.exe file located under the AnySite installation folder (C:\Program Files\MapInfo\AnySite_XX by default). Map the drive to the AnySite installation folder where the user will be running AnySite from, and then run the ClientSetup.exe file from the client machine (as described in the next section [Launching the AnySite Client Setup Wizard](#)).

Map a drive on each client machine using the same map drive letter. After running the Client installation on each client machine, run the final system setup as described under [Final System Configuration on page 37](#).

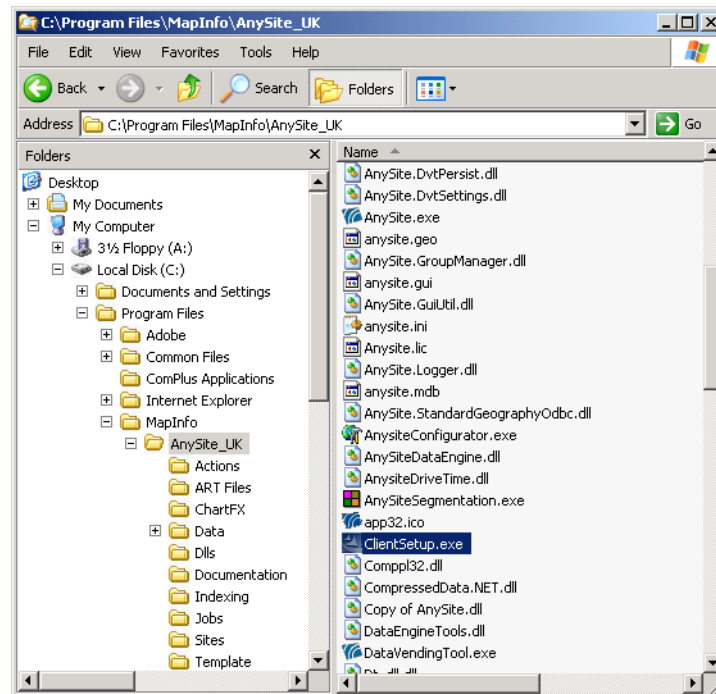
The mapped drive is only required for the installation process. Use UNC to run the application from a network.

Note The Client setup creates shortcuts pointing to the mapped drive not the UNC.

Launching the AnySite Client Setup Wizard

To launch the Client Setup wizard to install AnySite Client:

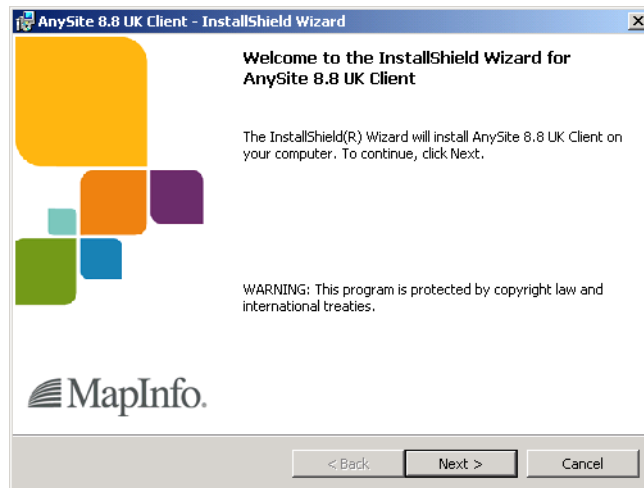
1. Locate the ClientSetup.exe file in the folder where AnySite is installed. By default, AnySite installs to C:\Program Files\MapInfo\AnySite_XX. Double-click on the **ClientSetup.exe** file to launch the Client Setup wizard.



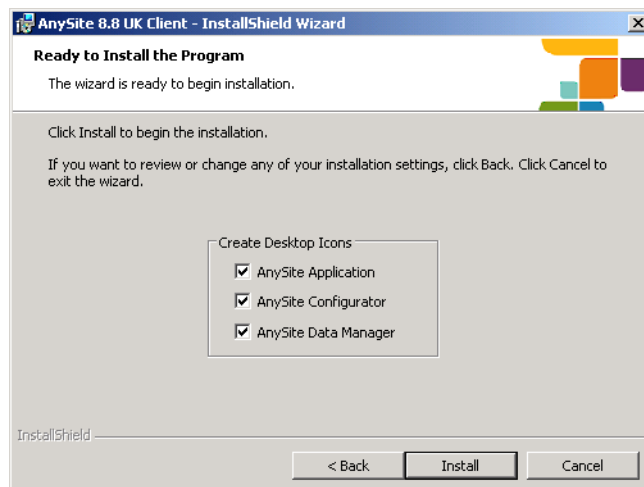
If the Welcome to Microsoft .NET Framework 2.0 Setup screen appears, follow the instructions under [Installing the .NET Framework on page 31](#) and then continue with the next step.

Installing the AnySite Client

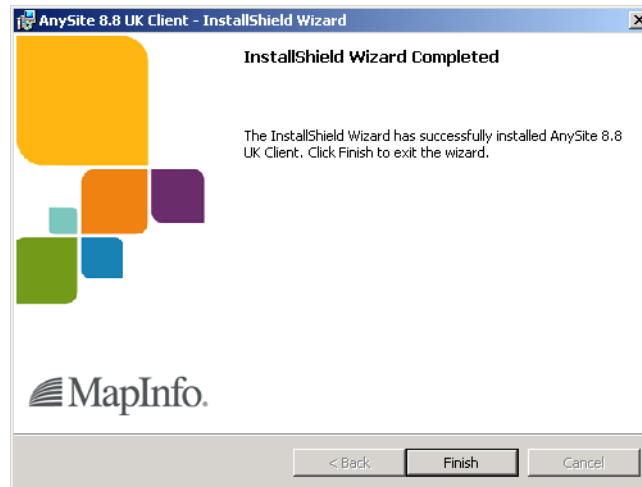
2. The Welcome screen appears.
Click **Next** to continue.



3. The Ready to Install the Program screen appears.
Select which desktop Shortcuts to create. (The AnySite Configurator requires AnySite administrative permissions to access.)
Click **Install** to begin the Installation process.



4. The Install Shield Wizard Completed screen appears once the AnySite Client has been installed.
Click **Finish** to complete the Installation.



The help systems for AnySite and for the Data Manager do not display on AnySite Client machines due to a Microsoft network security setting. You must copy the help files to the client machines, so that users can open them. Copy the files called `MapInfoAnySite.chm` and `AnySiteDataManager.chm` files from the AnySite Documentation folder (`C:\Program Files\MapInfo\AnySite_XX\Documentation`) to the corresponding folder on each client machine.

Proceed to **Final System Configuration**.

Final System Configuration

Before launching AnySite for the first time, you must complete the steps in the following sections:

- **Launching the Configurator**
- **Importing Repository Transfer (ART) Files for your Data**
- **Cataloging System Data if Stored to a Non-Default Location**

These settings are made in the Configurator, which is a utility for managing your AnySite installation.

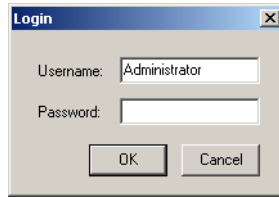
If you installed AnySite to a network location, so that the AnySite Client is on a different machine, then perform all of these steps on each client machine.

Launching the Configurator

To launch the AnySite Configurator and complete the setup of your installation:

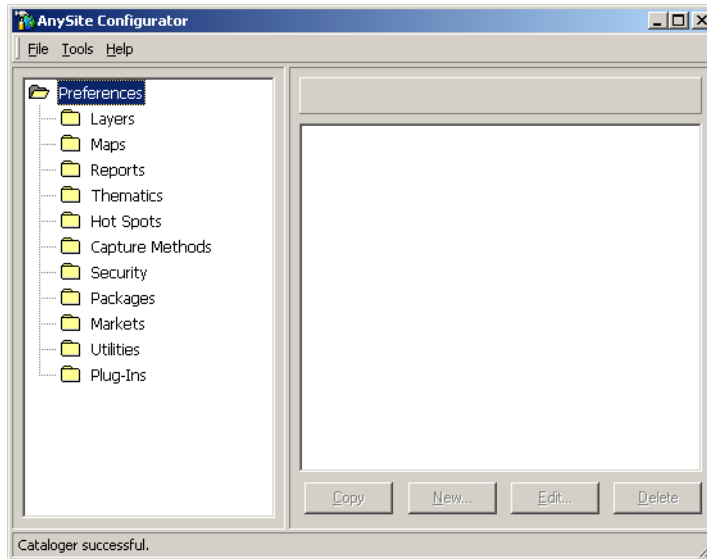
1. Either click the AnySite Configurator icon on your desktop or click **Programs > MapInfo > AnySite XX > AnySite Configurator** in the Microsoft **Start** menu.
2. The Login dialog opens.

Enter the default user name and password when prompted: type *Administrator* for the username and leave the password blank. Click **OK** to proceed. Usernames are case sensitive, so make sure Administrator has a capital "A".



The Cataloger, a utility accessible from the Configurator, will scan several settings for AnySite; you may receive a message that the Cataloger will adjust these settings. If at a later time you receive this message, then rerun the Cataloger as described under **Cataloging System Data if Stored to a Non-Default Location on page 41**

3. The AnySite Configurator opens.



Proceed to **Importing Repository Transfer (ART) Files for your Data**.

Importing Repository Transfer (ART) Files for your Data

After installing your license file, you must import repository transfer (ART) files, which contain reports, thematics, and other settings. Reports are data dependent. If you run a report and you have not purchased the accompanying data for the report, then a "data not licensed" message appears.

Determine Which ART Files to Import

Use the following table to determine which ART files to import relative to the data you purchased and are licensed for. You must import the corresponding ART files using the Configurator.

MapInfo Canada

Bundle	ART File
Standard	MapInfo Canada 20XX Standard Bundle.art
Business Summary	MapInfo Canada 20XX Business Reports.art
CANEX	MapInfo Canada 20XX CANEX Reports.art
CANEX-Food	MapInfo Canada 20XX CANEX Food Reports.art
PSYTE	MapInfo Canada 20XX PSYTE Advantage Reports.art
PMB-Print Media Bureau (like MRI)	MapInfo Canada 20XX PMB Reports.art
HFE-HH Facilities and Equipment	MapInfo Canada 20XX Household Facilities and Equipment Reports.art
DDI-Disposable and Discretionary Income	MapInfo Canada 20XX Disposable and Discretionary Income Reports.art

MapInfo U.S.

Bundle	ART File
Basic	MapInfo US 20XX Basic Bundle.art
Market	MapInfo US 20XX Market Bundle.art
PSYTE	MapInfo US 20XX PSYTE Bundle.art
PSYTE Financial	MapInfo US 20XX PSYTE Financial Reports.art
CPD-Consumer Potential Detail	MapInfo US 20XX CPD Bundle.art
Business Summary (SIC and NAIC)	MapInfo US 20XX Business Summary Bundle.art
Demand Insight	MapInfo US 20XX Demand Insight.art
Puerto Rico	MapInfo PR 20XX Reports.art
Puerto Rico	MapInfo PR 20XX Thematics.art
Cultural Background	MapInfo US 20XX Cultural Background Reports.art
Wealth and Financial Assets	MapInfo US 20XX Wealth and Financial Assets Bundle.art

AGS

Bundle	ART File
Standard	AGS 20XX Standard Bundle.art
Mosaic	AGS 20XX Mosaic Reports.art
Crime	AGS 20XX Crime Risk Reports.art
CEX-Consumer Expenditure	AGS 20XX CEX Reports.art
Business Basic	AGS 20XX Business Basic Reports.art
Business Complete	AGS 20XX Business Complete Reports.art

Claritas

Bundle	ART File
PopFacts	Claritas 20XX PopFacts Bundle.art
PopFacts with CBP	Claritas 20XX CBP PopFacts Reports.art
Retail Analyst	Claritas 20XX Retail Analyst Bundle.art
CBP-Consumer Buying Power	Claritas 20XX CBP Reports.art
WPBE-Workplace Business & Employment	Claritas 20XX WPBE Reports.art
PRIZM-NE	Claritas 20XX PRIZM NE Reports.art
Business Facts Occupation	Claritas 20XX Business Facts Occupation Reports.art
TDSIC-Two Digit SIC Bus Summary	Claritas 20XX TDSIC Reports.art
PRIZM-NE Daytime	Claritas 20XX PRIZM NE Workplace Reports.art
Income Producing Assets	Claritas 20XX Income Producing Assets Reports.art

PopStats

Bundle	ART File
Standard	PopStats 20XX Qx Bundle.art (x=1-4)

Import ART Files Using the Configurator

To import the ART files for your data in the Configurator:

1. Click **Tools > Importing Preferences** in the AnySite Configurator menu.
2. In the Import Preferences dialog, select the *.art file to import (according to the data bundle that you purchased, as identified in the preceding table) and then click **Open**.
You may need to select the **Look in** list to locate the *.art files the **ART Files** folder. The default location is C:\Program Files\MapInfo\AnySite_XX\Art Files.
3. In the Select Preferences to Import dialog, select all of the preferences in the list, by pressing the **Ctrl** key, and then click **OK**.
4. Repeat these steps for each ART file to import (if you have licensed data outside the base demographic offering).

You have completed the system configuration and are now ready to launch AnySite, proceed to **Chapter 4: Starting AnySite**.

If you installed the data supplied with AnySite to a non-default location, then proceed to **Cataloging System Data if Stored to a Non-Default Location** before launching AnySite.

Cataloging System Data if Stored to a Non-Default Location

If the data supplied with AnySite was installed to a non-default location, then configure AnySite to the location of the data files using the AnySite Configurator as described in this section.

Shared (network) installations must install the AnySite Client before continuing. If you have not already done so, see **Installing the AnySite Client on page 34**.

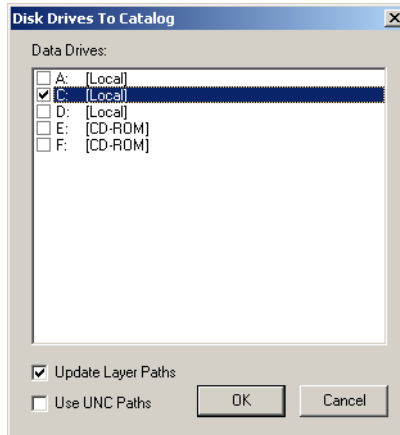
To catalog the data stored in a non-default location, in the Configurator:

1. Click **Tools > Cataloger** in the AnySite Configurator menu.
2. In the Disk Drives to Catalog dialog, check all the drives that contain AnySite and any additional data for use with AnySite.

If you installed StreetPro[®], then select its data directories for cataloging. The default StreetPro location is C:\Program Files\MapInfo\Professional X.X\SPXXXX.

If you installed AnySite to a network location, so that the AnySite Client is on a different machine, then select the AnySite installation directory (which will be a mapped drive). If you could not use the same drive letter when mapping drives on the client machines, then you must also select the **Use UNC Paths** check box.

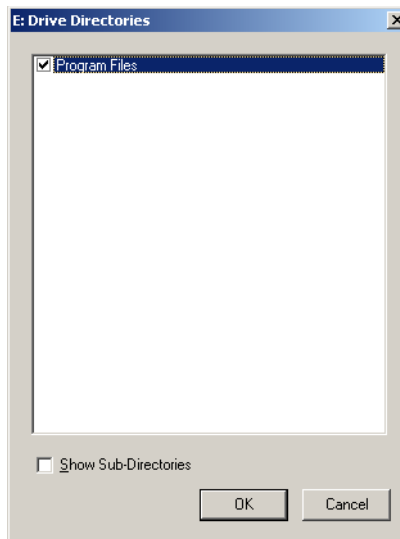
Ensure that the **Update Layer Paths** check box is selected to fix any invalid paths, and then click **OK**.



Note The Update Layer Paths check box updates paths to tables that may be invalid. The Use UNC Paths check box records the Universal Naming Convention (UNC) location to the data. UNC codes are used in network deployments where consistent network drive mappings for each user are not guaranteed. The Cataloger still requires the drives be mapped on the machine running the cataloger.

Note You must use the same drive letter for all client installations.

3. In the Drive Directories dialog, check all the drives that contain AnySite data, and then click **OK**.



You have completed the system configuration and are now ready to launch AnySite, proceed to [Chapter 4: Starting AnySite](#).

Note You must reboot the system before running AnySite for the first time.

Run the Cataloger after purchasing additional data sources or when moving data sources, so that AnySite recognizes the data.

Starting AnySite

This chapter describes how to launch AnySite.

In this chapter:

- ◆ **Logging into and Launching AnySite.46**
- ◆ **Handling Data Not Found Messages46**
- ◆ **Default Locations for Data.47**

Logging into and Launching AnySite

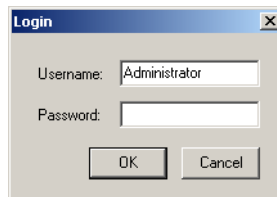
If you have not yet run the final system configurations using the Configurator, then you must do so first, see [Final System Configuration in Chapter 3 on page 37](#).

Note You must reboot the system before running AnySite for the first time.

To start AnySite:

1. Either click the AnySite icon on your desktop or click **Programs > MapInfo > AnySite XX** in the Microsoft **Start** menu.
2. The Login dialog opens.

Enter the default user name and password when prompted: type *Administrator* for the username and leave the password blank. Click **OK** to proceed. Usernames are case sensitive, so make sure Administrator has a capital "A".



Note If you receive a data not found message, then proceed to [Handling Data Not Found Messages](#).

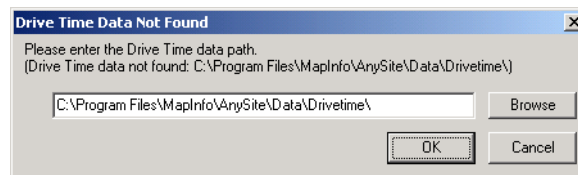
AnySite opens. Refer to the Tutorial section in the *AnySite Reference* for an overview of how to work with AnySite.

Handling Data Not Found Messages

The first time you launch AnySite, you may be prompted to locate data files if they are installed to a non-default location.

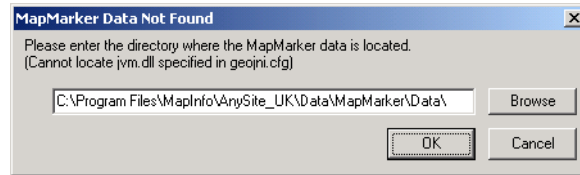
Drive Time Data Not Found

When launching AnySite the first time, you may get a Drive Time Data Not Found message regarding the location of the Drive Time Data. Use the Browse button in the message dialog to navigate to the proper directory (C:\Program Files\MapInfo\AnySite_XX\Data\AGS\Freeway for example) and then click **OK** to close the dialog.



MapMarker® Data Not Found

When launching AnySite the first time, you may get several MapMarker Data Not Found messages regarding the location of the MapMarker address data. This means that AnySite does not have the correct path to your geocoder data. Use the Browse button in the dialog to navigate to the proper directories, and then click **OK**.



Default Locations for Data

The following are default locations for data products:

- OEM Marker component of AnySite:
C:\Program Files\MapInfo\AnySite_XX\Data\MapMarker\Data
- Full version of MapMarker Plus, requires a separate install and runs outside of AnySite:
C:\Program Files\MapInfo\MapMarker\Data
- Full version of MapMarker Plus for Canada, requires a separate install and runs outside of AnySite Canada: C:\Program Files\MapInfo\MapMarker Plus Canada\Canada

Upgrading Your Current Installation

Depending on your data provider, your demographic content may be updated one to four times a year. Updated templates for all Standard reports, Thematics, Hotspots, and Capture Methods are provided with each demographic update.

In this chapter:

- ♦ **Backing-Up Custom Files**50
- ♦ **Are you upgrading from AnySite 8.7.x?**50
- ♦ **Upgrading AnySite**51
- ♦ **Updating Reports and Thematics**52
- ♦ **Upgrading the AnySite Client**55

Backing-Up Custom Files

Before upgrading your current installation of AnySite, it is recommended you move or copy the following file types to a new location, outside of the AnySite application directory:

- anysite.mdb (located in the AnySite application directory)
- custom layers (for example, Tables/Server/Linked)
- .SIT files (Saved Sites) (AnySite\Sites)
- .LST (Batch List)
- .ACT (Batch Actions) (AnySite\Actions)
- .XML (Index Files) (AnySite\Indexing)
- custom symbols (AnySite\MapX\CUSTSYMB)

Create an ART (AnySite Repository Transfer *.art) file of any custom reports, Thematics, Hotspots, capture methods, and any other custom files that you wish to retain, such as:

- custom map preferences
- custom reports
- custom report templates
- custom thematics
- custom Hotspots
- custom Capture Methods

To do this, run the Configurator and click **Tools > Export Preferences**. Select the custom reports, thematics, capture methods, and map preferences that you have created. Save the ART (AnySite Repository Transfer *.art) file to a safe location that is outside of the AnySite application directory for future access.

Are you upgrading from AnySite 8.7.x?

If you are upgrading from AnySite 8.7.x, then you must first delete the MapMarker folder where AnySite is installed. This is necessary as a result of changes made to the structural organization of the MapMarker files.

In Windows Explorer, navigate to the MapMarker folder. In a standard install this will be C:\Program Files\MapInfo\AnySite_XX\Data\MAPMARKER. Select the **MAPMARKER** folder and click **File > Delete**.

Continue with the instructions in the next section, [Upgrading AnySite](#).

Upgrading AnySite

To upgrade from the previous release:

1. Place the AnySite Installation DVD in the media drive.

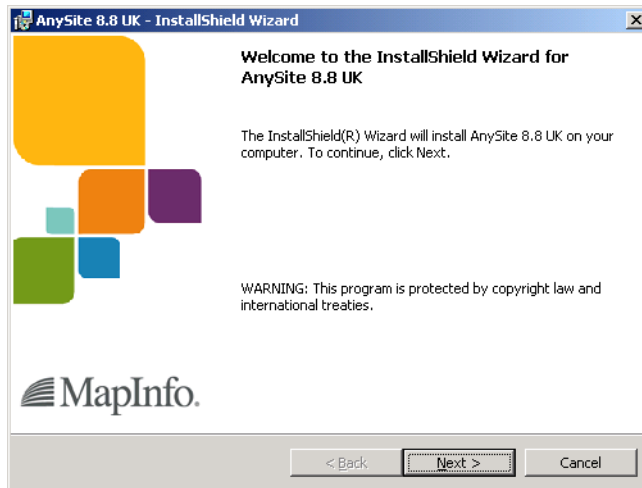
Note If you are a Windows 7 user, see [Installing AnySite on Windows 7 on page 30](#) for installation instructions that are specific to that operating system, then continue to [step 2](#) below.

If the installation does not automatically start, click **Run** from the Microsoft **Start** menu, and click the **Browse** button. Go to the media drive and select Launch.exe.

Select **Install**, then select **Install AnySite**.



2. The InstallShield Installer Update Completed screen displays.
Click **Continue**.
3. A prompt to upgrade your AnySite application and data displays.
Click **Yes**.
4. The Welcome screen displays.
Click **Next** to continue.



Follow the installation directions that match your current deployment (local or network). When prompted, check the installation path to make sure you are upgrading the desired AnySite installation.

After completing the install and final system configuration, continue with the directions under [Updating Reports and Thematics on page 52](#) to update your custom reports and thematics.

Updating Reports and Thematics

If you are upgrading demographic data, then the existing standard reports (Summary, Detail, Comparative, and Quick View), thematics (Shades, Hotspots and Dot Densities), and Capture Methods in your AnySite now need to be updated. Changes made by your demographic data provider may prevent the existing data from functioning properly within AnySite.

Updating Standard Reports and Thematics

To change the vintage on standard reports:

1. Launch the AnySite Configurator. Either click the AnySite Configurator icon on your desktop or click **Programs > MapInfo > AnySite XX > AnySite Configurator** from the Microsoft Start menu.
Enter the default user name and password when prompted: type *Administrator* for the username and leave the password blank. Usernames are case sensitive, so make sure Administrator has a capital "A".
Click **OK** to proceed.
2. Click **Tools > Import Preferences**.
3. Navigate to the ART Files folder under the AnySite installation folder (C:\Program Files\MapInfo\AnySite_XX\Art Files for example).
4. Select the most recent .ART file.

5. Highlight all items, and click **OK**.

The Configurator is updated with the new reports and thematics that correspond with the data.

6. Repeat from **step 3** for all the new/updated ART files.

Note A detailed electronic copy of exporting and importing preferences directions is provided on the AnySite Installation disk under Upgrade\Documentation.

Updating your Custom Reports and Thematics

It will only be necessary for you to manually update the "Verbose" descriptions on reports, thematics, Hotspots, and Capture Methods that you have customized. The underlying demographic content (numbers) are automatically updated by the AnySite installer, the "Verbose" descriptions (2004 Total Population) will have to be manually altered from 2004-2005 via the Configurator.

All reports, thematics, Hotspots, and capture methods will continue to run successfully using the newest content from the installer. However, without importing the updated "Standard" reports and modifying the "verbose" descriptions on your custom reports, the printed maps and reports will continue to display the previous data vintage.

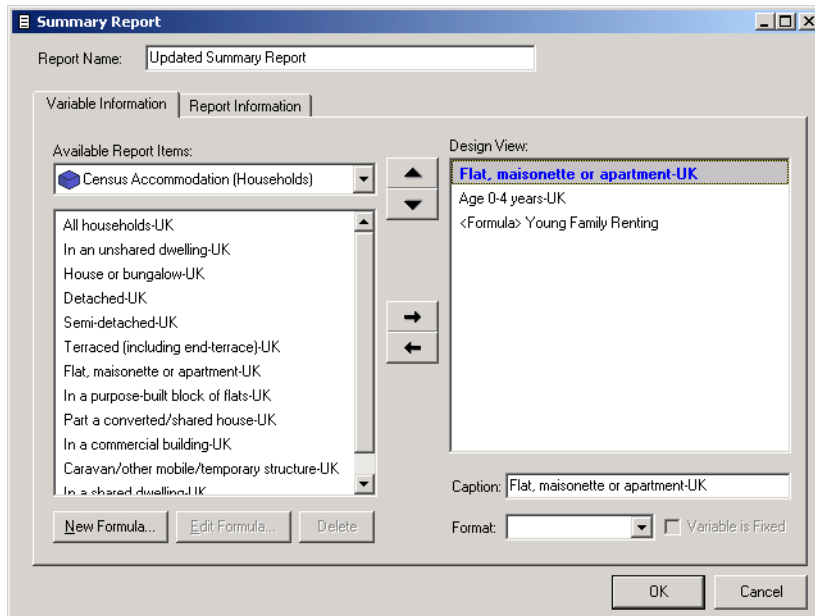
To change the vintage on custom reports:

1. Launch the AnySite Configurator. Either click the AnySite Configurator icon on your desktop or click **Programs > MapInfo > AnySite XX > AnySite Configurator** from the Microsoft Start menu.

Enter the default user name and password when prompted: type *Administrator* for the username and leave the password blank. Usernames are case sensitive, so make sure Administrator has a capital "A".

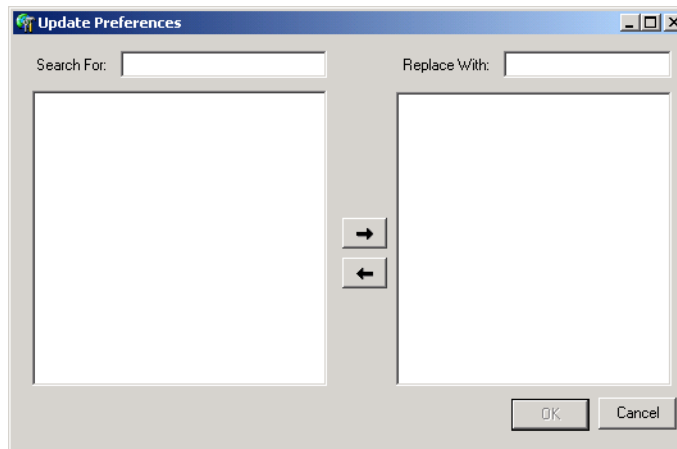
Click **OK** to proceed.

2. On the **Preferences** menu, click **Reports**.
3. Select your custom report, and click **Edit**.
4. Select a variable and modify the verbose descriptions. Click **OK** when you have finished.



Some of your existing thematics and reports may continue to run, but the verbose vintage descriptions, such as 2004, will be incorrect, or you may see NOT LICENSED on your reports. These variables will need to be manually replaced with the newly updated data. To do this:

1. In the Configurator from the **Tools** menu, click **Update Preferences**.
2. In the Update Preferences dialog, type the vintage description in to the **Search For** box.



3. Select the found items to update and move them to the Replace With list by clicking the right arrow button.
4. In the **Replace With** box, type the new vintage description and then click **OK**.

Upgrading the AnySite Client

To upgrade the AnySite Client software, run the ClientSetup.exe file located in the AnySite installation folder (C:\Program Files\MapInfo\AnySite_XX for example).

Network clients need to be uninstalled from the client machine and reinstalled to guarantee a correct update to the system. Follow the directions under **Installing to a Network (Shared by Multiple Users) in Chapter 3 on page 21**.

AnySite integrates data from several third party data vendors. There may be times when changes to the data will affect AnySite functionality. In some cases, the best option will be to install a new version of the application, with the new data. We are continuously working with our vendors to establish consistent releases of the various data products to minimize these occurrences.

Uninstalling

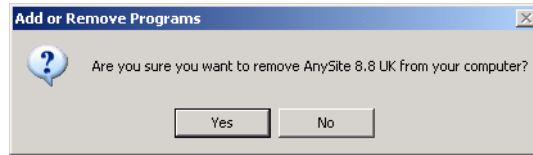
To uninstall your AnySite software, follow the instructions provided here.

In this chapter:

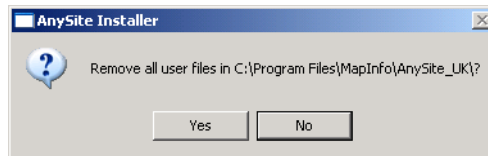
- ◆ **Uninstalling the AnySite Application58**
- ◆ **Uninstalling the AnySite Client58**

Uninstalling the AnySite Application

To uninstall the AnySite application, click **Start > Settings > Control Panel > Add or Remove Programs** and select AnySite. Click **Remove** for this application. A prompt displays asking if you would like to remove AnySite from your computer. Click **Yes** to proceed with the uninstall.



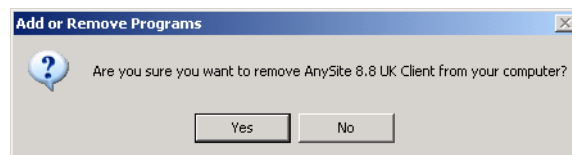
You are then prompted if you would like to remove all user files from the application directory. Selecting Yes removes the entire application directory and all contents of that directory. This includes any files you may have created in the AnySite directory, such as saved sites, custom location or boundary layers. By selecting No, only the Sites, and Art Files directories are left untouched.



Once the installer completes, AnySite is removed from your system.

Uninstalling the AnySite Client

To Uninstall the AnySite Client, click **Start > Settings > Control Panel > Add or Remove Programs** and select AnySite Client. Click **Remove** for this application. You are prompted if you would like to remove the AnySite Client from your computer. Click **Yes** to proceed with the uninstall.



Once the installer completes, the AnySite Client will be removed from your system.

Performance Tuning a Network Installation

If you selected a Shared setup type, so that multiple users can access AnySite, then consider tuning your installation to improve AnySite performance.

In this chapter:

- ◆ **Network Speed**60
- ◆ **Virus Scanner Software Settings**60

Network Speed

Using a 100 Megabit network connection is optimal. Using a slower network connection affects the refresh rate when panning or refreshing the map view.

Virus Scanner Software Settings

AnySite performance slows when virus software scans AnySite data. The performance decrease is noticeable with a network installation when multiple people access AnySite.

AnySite opens many data layers for display in the map view. A data layer consists of five files that AnySite launches to display the layer. There may be 16 to 19 layers on display in the map view. AnySite queries all of the layer files when you pan or refresh a map.

To improve performance, set the virus software to exclude the AnySite data directory from the virus scan (the C:\Program Files\MapInfo\AnySite_XX\Data directory for example), or to exclude the following file type extensions from the virus scan:

- .tab – A MapInfo table file that describes the format of the data.
- .dat – A file containing tabular data.
- .map – A file that describes the graphic objects.
- .id – A cross reference file that links the data with the graphic objects.
- .ind – An index file for searching for map objects.

