



AnySite Australia 2009 Data Update Notes

This document contains information for installing the 2009 E&P data updates for AnySite® Australia, version 8.8.1 build 191.

This release also provides the new Mesh Block geography level (see “**About the Mesh Block Geography Level**” on page 6 for more information). If you are an upgrade customer and wish to use this new geography level, see “**Upgrading with Mesh Block Data**” on page 6 for instructions.

If you require assistance with this update, please contact Technical Support Australia via phone at 1.800.648.899 (toll free) or email pbbsi.support@pb.com.

Asia Pacific/Australia:
Phone: +61.2.9437.6255
Fax: +61.2.9439.1773
Technical Support: 1.800.648.899
pbinsight.com.au

©2010 Pitney Bowes Software Inc. All rights reserved. MapInfo, Group 1 Software, and AnySite are trademarks of Pitney Bowes Software Inc. All other marks and trademarks are property of their respective holders.

April 2010

Table of Contents

- ◆ **Installing Data** 1
- ◆ **Installing the License** 2
- ◆ **Importing ART Files** 3
- ◆ **What’s Changed in this Release** 4
- ◆ **Known Issues** 5
- ◆ **Upgrading with Mesh Block Data** 6

Installing Data

Before you begin you must exit AnySite if it is open and back up any custom files you have in your current installation (for details, see “Upgrading Your Current Installation” chapter of the **AnySite Version 8.8 Install Guide**). This includes the AnySite.ini file, which is overwritten during an upgrade.

To install the AnySite data update onto a local machine:

1. Place the AnySite data update DVD in the media drive.
If the installation does not automatically start, click **Run** from the Microsoft Start menu, and click the **Browse** button. Go to the media drive and select **Launch.exe**.
Select **Install**, and then select **Install AnySite**.
2. At the prompt, click **Yes** to accept the upgrade.
3. The Welcome screen appears.
Click **Next** to continue.
4. Follow the installation directions that match your current deployment (local or network). When prompted, check the installation path to make sure you are upgrading the desired AnySite installation.

Manual Installation Instructions

If you prefer, or if you have an issue running the installer from the DVD, you can also install the data update by manually copying the new data files and the AnySite Repository Transfer (ART) file from the AnySite DVD to your AnySite installation location.

To copy data files:

1. Place the AnySite DVD in the DVD drive. The Welcome screen displays.
2. Click **Browse CD**.
3. Click **Browse Now**.
4. Launch Windows Explorer.
5. In Windows Explorer, navigate to the ASDE folder on the AnySite DVD, located under ...Upgrade\Data\ASDE.
6. In the ASDE folder on the AnySite DVD, highlight **all** of the files by clicking **Select all** from the **Edit** menu. Copy all of the files by clicking **Copy** from the **Edit** menu.
7. In Windows Explorer, navigate to your AnySite installation. The default AnySite location is C:\Program Files\MapInfo\AnySite_AU\Data\ASDE.
8. In the ASDE folder in your AnySite installation, paste the files by clicking **Paste** from the **Edit** menu.
Choose to overwrite the existing files when prompted.

To copy the ART files:

1. In Windows Explorer, navigate to the ART Files folder on the AnySite DVD. The ART File folder is located under Upgrade\ART Files.
2. In the ART Files folder, select the **MapInfo Australia Census 2006 Bundle.art** file and the other ART files that you purchased and are licensed for.
3. Copy the files by clicking **Copy** from the **Edit** menu.
4. In Windows Explorer, navigate to your AnySite installation. The default AnySite location is C:\Program Files\MapInfo\AnySite_AU\ART Files.
5. In the ART Files folder in your AnySite installation, paste the files by clicking **Paste** from the **Edit** menu.
Choose to overwrite the existing files if prompted.

To copy the documentation files:

1. In Windows Explorer, navigate to the Documentation folder on the AnySite DVD. The Documentation folder is located under Upgrade\Documentation.
2. In the Documentation folder, select all the files and click **Copy** from the **Edit** menu.
3. In Windows Explorer, navigate to the Documentation folder in your AnySite installation. The default AnySite location is C:\Program Files\MapInfo\AnySite_AU\Documentation.
4. In the Documentation folder in your AnySite installation, paste the files by clicking **Paste** from the **Edit** menu.
Choose to overwrite the existing files if prompted.

Installing the License

For this data update, you must also install the license file.

1. Place the License CD in the DVD drive.

If the installation does not automatically start, click **Run** from the Microsoft Start menu, browse to the DVD drive, and select **INSTALL.EXE**.

2. In the License Installer screen click **Install** to copy the license file to your AnySite ASDE folder (ensure the path is correct for your installation C:\Program Files\MapInfo\AnySite_AU\Data\ASDE is the default location).
3. A notice dialog appears. Click **OK** when prompted that the installation is complete.
4. **Important:** Locate the new cledata.cdl and cledata.cdl.icn geolicense files on the License CD, then manually copy them to your ASDE folder. This action is required due to a known issue with the license installer (see **Geolicense Files Not Copied After Upgrade Install on page 5**).

If the license installation is not working, point to the license file using AnySite Configurator:

1. Open the AnySite Configurator.
2. From the **Tools** menu, select **ASDE Settings**.
3. In the License Path text area, click the **Browse** button and point to the new license file (for example, C:\Program Files\MapInfo\AnySite_AU\Data\ASDE\[NAME].lic).
4. Click **OK**.

Importing ART Files

After installing the license, import the ART files. To do this:

1. Launch the Configurator.
2. From the **Tools** Menu, select **Import Preferences**.
3. In the Import Preferences dialog:
 - a. From the **Look in** list, select the **ART Files** folder where AnySite is installed. The default location is C:\Program Files\MapInfo\AnySite_AU\ART Files.
 - b. From the list of files, select the **MapInfo Australia Census 2006 Bundle.art** file.
 - c. Click **Open**.
4. In the Select Preferences to Import dialog, select all of the reports in the list and click **OK**.

Choose to overwrite the existing files if prompted.

Note This will erase any changes you have made to the standard reports listed in this .ART file. If you need to preserve these changes you should backup these reports using a separate exported .ART file. Clicking OK will not erase any changes made to your own custom reports, however.

5. Repeat steps 2–4 for each of the additional ART files that you purchased and are licensed for.

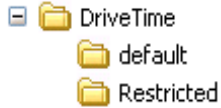
Your data update is now complete. Restart AnySite to begin working with the data.

What's Changed in this Release

DriveTime

New Matrix.TAB Files

Two Drivetime files, Default (Matrix.TAB) and Restricted (Matrix_Urban_Restricted.TAB), are now installed in the DriveTime directory in two new subfolders, Default and Restricted, respectively:



For new installations as well as upgrades, the DriveTime section in the Anysite.ini file points to the Restricted folder where the Matrix_Urban_Restricted.TAB file is located:

```
[DriveTime]
...
DataPath=C:\Program Files\MapInfo\AnySite_AU\Data\Drivetime\Restricted\
```

If you have customized your Matrix.tab file and would like to continue to use this file, edit the AnySite.ini file and change the DataPath setting as shown below:

```
DataPath=C:\Program Files\MapInfo\AnySite_AU\Data\Drivetime\
```

Or, if you require the default Matrix.TAB with the original speeds, instead of the Matrix_Urban_Restricted.TAB, change the DataPath setting as show below:

```
DataPath=C:\Program Files\MapInfo\AnySite_AU\Data\Drivetime\default
```

New Anysite.ini Setting

A new setting has been added to the Anysite.ini under DriveTime for TravelLimitDistance.

```
;What is the maximum distance (in miles) that the engine should search to find
this route? (smaller settings will improve performance, but may miss routes)
TravelLimitDistance=1000
```

POI Directory

In this release of AnySite Australia, the original POI directory at \MapInfo\AnySite_AU\Data\POI is replaced by an updated one at \MapInfo\AnySite_AU\Data\STREETS\POI.

If you are an existing user, remove the old POI directory and rerun Cataloger through Configurator to use the new one.

Known Issues

ART Files Not Removed by the Installer

Previous year's data and report files (.ART files) are not removed by the installer.

Cataloger Error

When you run the Cataloger after installing AnySite data to a non-default location, a Cataloger error may appear. Run the Cataloger a second time to ensure all variables and geography levels are registered properly.

Geolicense Files Not Copied After Upgrade Install

After the data installation, the attributes of the geolicense files cledata.cdl and cledata.cdl.icn are set to **Hidden**. If you attempt to run the license CD after this installation, these files are not copied over due to the change in file properties. If you are an upgrade customer, you must manually copy the two files (cledata.cdl and cledata.cdl.icn) to the ASDE folder as per [step 4](#) on page 3.

“Cannot open database [NAME] at Geolevel [XY]”

Not all data variables are available at the indicated geography level. For example, the error “Cannot open database STMILON at Geolevel MB” appears when running reports at the Mesh Block level against databases other than CAMEO or EuroDirect. This error also occurs with all Thematics. Certain kinds of data variables are not available at a certain geography levels. A table containing what is offered is available in the documentation folder (ABS Profiles and Geographies in AnySite Australia.xls).

Expenditure Reports Appear Twice

The 2009 “MapInfo Australia Expenditure Reports.art” file has two renamed Summary reports— “Average Expenditure Report” and “Total Expenditure Report.” The 2008 versions of these reports have plural spellings—“Average Expenditures Report” and “Total Expenditures Report.” Therefore, after performing an upgrade install then importing the 2009 “MapInfo Australia Expenditure Reports.art” file, you see both the singular and plural versions of each report in the Show Reports reports side panel.

Since both reports display the same data, you can delete the older 2008 versions with the plural spellings in the Configurator.

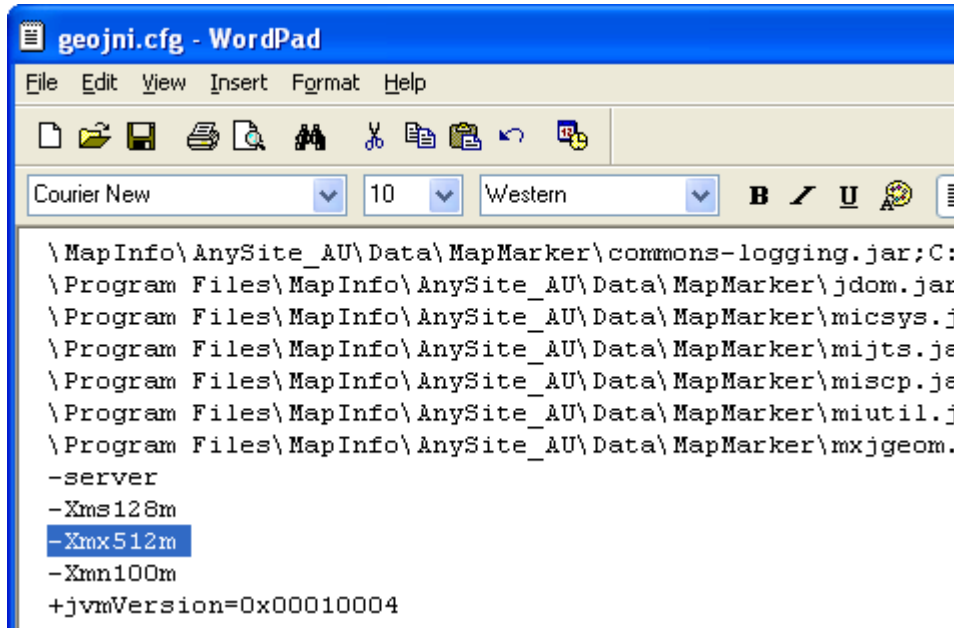
Drive Time Data Not Found

After launching AnySite the first time after the data update, you may get a Drive Time Data Not Found message regarding the location of the Drive Time Data. Use the Browse button in the message dialog to navigate to the proper directory (C:\Program Files\MapInfo\AnySite_AU\Data\AGS\Freeway for example) and then click **OK** to close the dialog.

MapMarker Data Not Found

When launching AnySite the first time, you may get several MapMarker Data Not Found messages regarding the location of the MapMarker address data. This means that AnySite does not have the correct path to your geocoder data. Use the Browse button in the dialog to navigate to the proper directories, and then click **OK**.

If you see a MapMarker Data Not Found message that returns error 1795, this means that the default maximum memory setting for the JVM has been reduced to 256MB instead of the required 512MB. Restore the default value to 512MB by editing the geojni.cfg file (C:\Program Files\MapInfo\AnySite_AU\geojni.cfg) as shown below:



```
geojni.cfg - WordPad
File Edit View Insert Format Help
Courier New 10 Western B / U
\MapInfo\AnySite_AU\Data\MapMarker\commons-logging.jar;C:
\Program Files\MapInfo\AnySite_AU\Data\MapMarker\jdom.jar
\Program Files\MapInfo\AnySite_AU\Data\MapMarker\micr.sys.ja
\Program Files\MapInfo\AnySite_AU\Data\MapMarker\mijts.ja
\Program Files\MapInfo\AnySite_AU\Data\MapMarker\miscp.ja
\Program Files\MapInfo\AnySite_AU\Data\MapMarker\miutil.ja
\Program Files\MapInfo\AnySite_AU\Data\MapMarker\mxjgeom.
-server
-Xms128m
-Xmx512m
-Xmn100m
+jvmVersion=0x00010004
```

Sample Detail Report (Postal Areas) Has No Values

If the Sample Detail Report (Postal Areas) does not generate any values, increase your drive time to 10 minutes.

Upgrading with Mesh Block Data

This release of AnySite Australia includes a new geography level called Mesh Block.

About the Mesh Block Geography Level

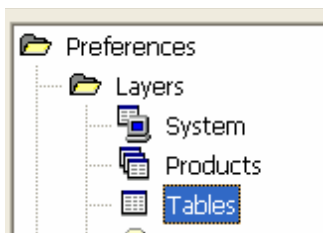
The Australian Bureau of Statistics (ABS) developed Mesh Blocks as a new micro-level geographical unit for statistics. There are 314,369 spatial Mesh Blocks covering Australia with most residential Mesh Blocks containing approximately 30 to 60 dwellings. Mesh Blocks are intended to become a new building block of statistical and administrative geography. Usual residence population and total dwellings were made available from the 2006 Census of Population and Housing for each Mesh Block.

If you are an upgrade customer and wish to use this new geography level, follow the instructions below to configure your current AnySite installation.

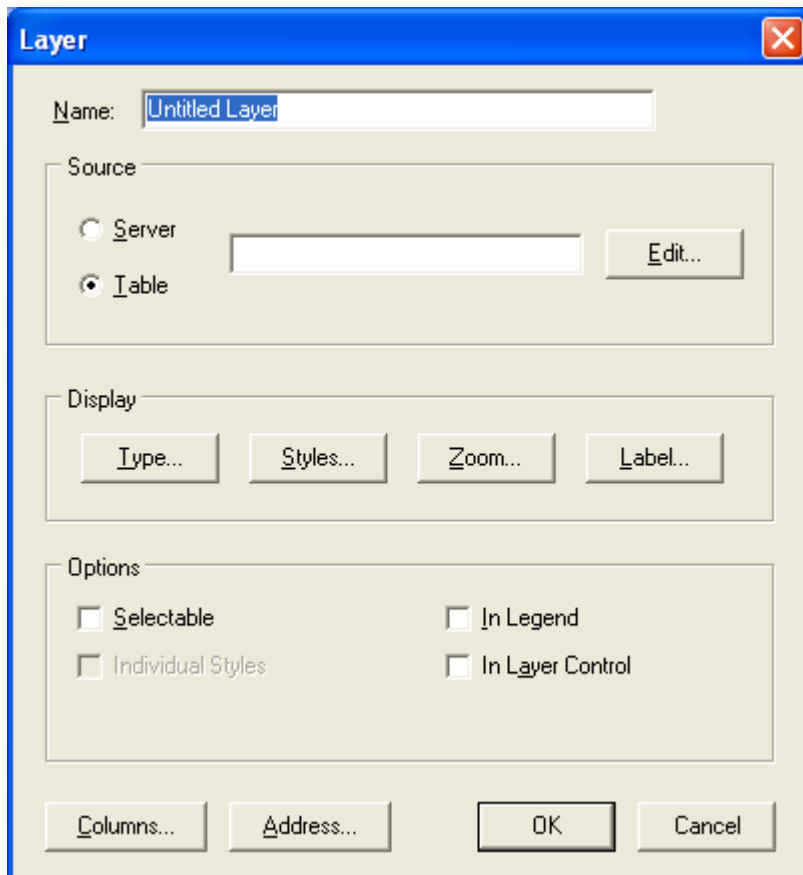
Note 2006 Census Usual Residence population and Total Dwellings are the only variables available at the Mesh Block level, so they cannot be added to reports or thematics at other levels of geography, and no other variables can be added to reports or thematics at the Mesh Block level.

Adding a Mesh Block Layer

1. Launch the Configurator.
2. Expand the **Preferences > Layers** folders and select **Tables**.

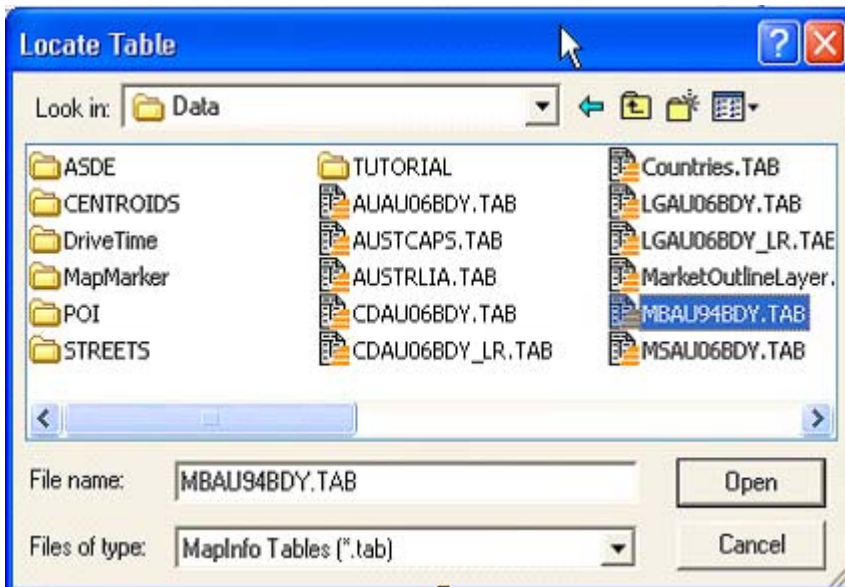


3. Click **New**.
The Layer dialog appears.

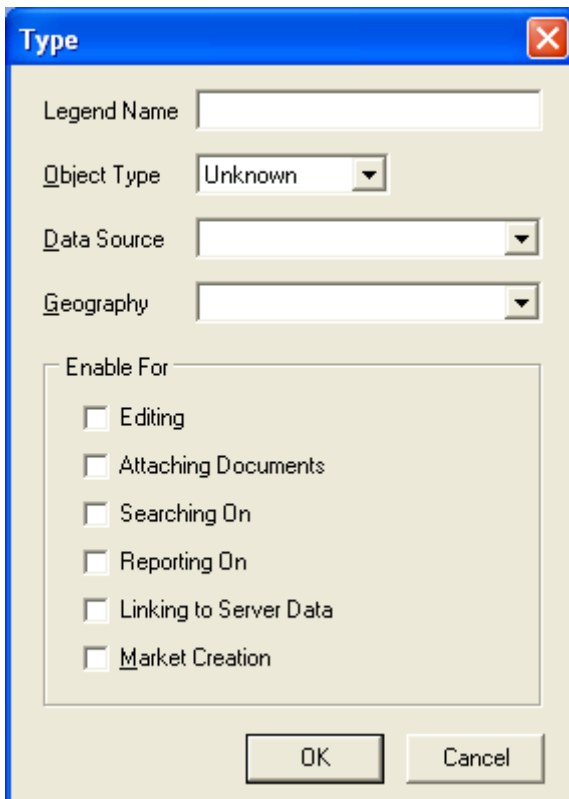


4. In the **Name** field, type **Mesh Block**.
5. In the Source section, click **Edit**.

6. Locate the **AnySite_AUData** directory. Select the **MBAU94BDY.TAB** file and click **Open**.



7. In the Display section of the Layer dialog, click **Type**. The Type dialog appears.

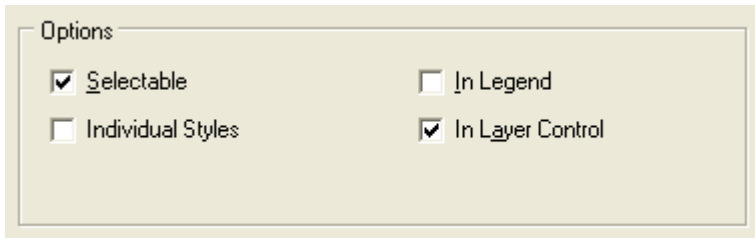


- a. In the **Legend Name** field, type **Mesh Blocks**.
- b. From the **Object Type** drop-down list, select **Regions**.
- c. From the **Data Source** drop-down list, select **ABS**.
- d. From the **Geography** drop-down list, select **Mesh Block**.

Note If Mesh Block is not an option in this drop-down list, you must first add it using the Boundary Manager (see [Adding a Mesh Block Boundary on page 10](#)).

- e. In the Enable For section, select **Searching On** and **Reporting On**.
- f. Click **Ok**.

8. At the bottom of the Layer dialog in the Options section, select the options shown below (**Selectable** and **In Layer Control**) and click **OK**:

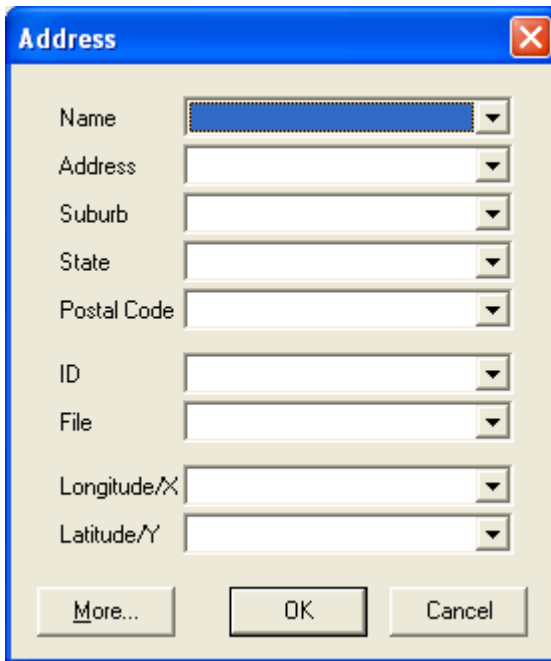


Options

<input checked="" type="checkbox"/> <u>S</u> electable	<input type="checkbox"/> In Legend
<input type="checkbox"/> Individual Styles	<input checked="" type="checkbox"/> In <u>L</u> ayer Control

9. Click **Address**.

The Address dialog appears.



Address

Name

Address

Suburb

State

Postal Code

ID

File

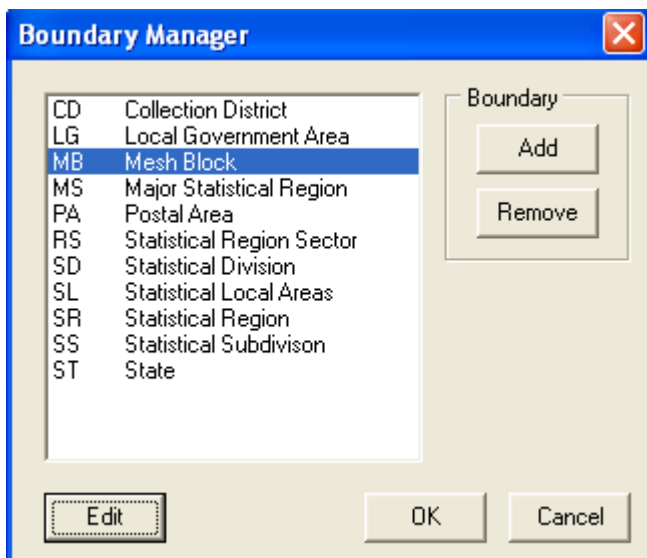
Longitude/X

Latitude/Y

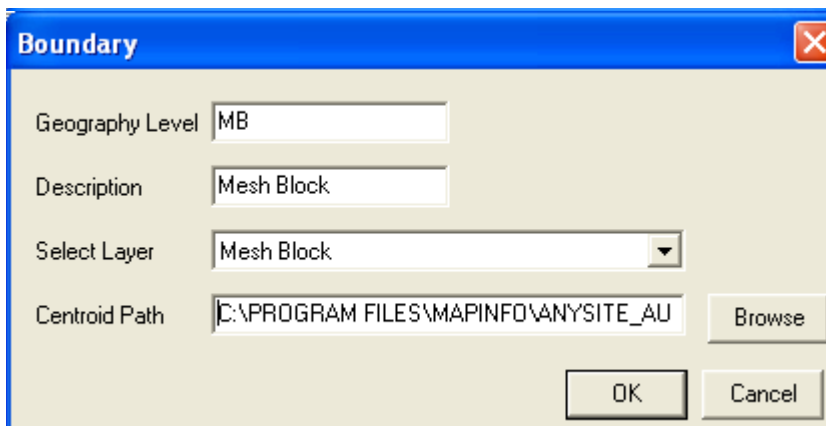
- a. From the **ID** drop-down list, select ID.
 - b. From the **Longitude/X** drop-down list, select **longitude**.
 - c. From the **Latitude/Y** drop-down list, select **latitude**.
 - d. Click **OK**.
10. In the Layer dialog, click **OK**.

Adding a Mesh Block Boundary

1. Select **Tools > Boundary Manager**.
The Boundary Manager dialog appears.



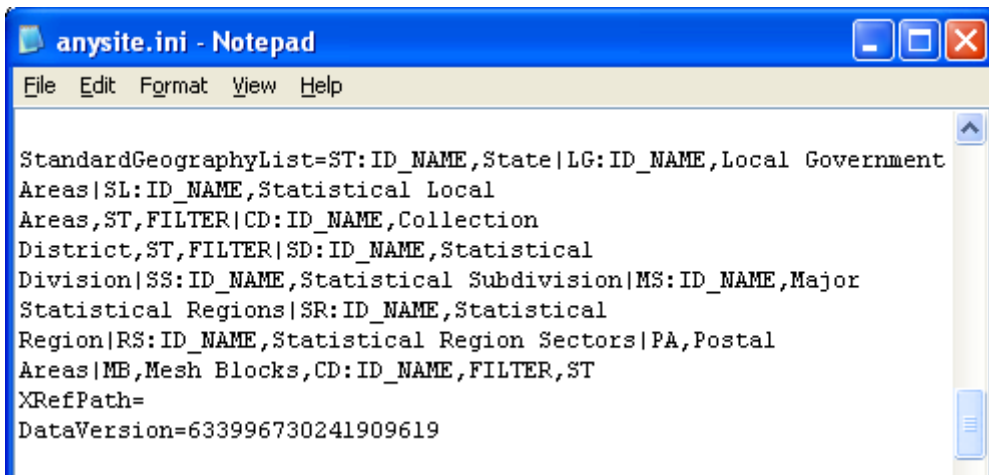
2. If Mesh Block does not appear in the list, click **Add**.
The Boundary dialog appears.



- a. In the **Geography Level** field, type **MB**.
- b. In the **Description** field, type **Mesh Block**.
- c. From the **Select Layer** drop-down list, select **Mesh Block**.
- d. In the **Centroid Path** field, verify the path is:
C:\PROGRAM FILES\M&PINFO\ANYSITE_AU\DATA\CENTROIDS\MBAU94CEN
- e. Click **OK**.

Editing the AnySite.ini File

1. In the Configurator, select **Tools> Edit Application INI File**.
2. Locate the `StandardGeographyList` entry.



```
StandardGeographyList=ST:ID_NAME,State|LG:ID_NAME,Local Government Areas|SL:ID_NAME,Statistical Local Areas,ST,FILTER|CD:ID_NAME,Collection District,ST,FILTER|SD:ID_NAME,Statistical Division|SS:ID_NAME,Statistical Subdivision|MS:ID_NAME,Major Statistical Regions|SR:ID_NAME,Statistical Region|RS:ID_NAME,Statistical Region Sectors|PA,Postal Areas|MB,Mesh Blocks,CD:ID_NAME,FILTER,ST
XRefPath=
DataVersion=633996730241909619
```

3. Verify that the following text string is at the end of the `StandardGeographyList` entry:
| MB,Mesh Blocks,CD:ID_NAME,FILTER,ST
4. If this Mesh Blocks string does not appear, add it to the end of the `StandardGeographyList` entry, then save and close the `anysite.ini` file.
5. Open the AnySite Data Manager and verify that Mesh Blocks now appear:

