



# AnySite® Australia

Version 8.8

**INSTALL GUIDE**

Information in this document is subject to change without notice and does not represent a commitment on the part of the vendor or its representatives. No part of this document may be reproduced or transmitted in any form or by any means, electronic or mechanical, including photocopying, without the written permission of Pitney Bowes Software Inc., One Global View, Troy, New York 12180-8399.

©2007-2010 Pitney Bowes Software Inc. All rights reserved. MapInfo, Group 1 Software, and AnySite are trademarks of Pitney Bowes Software Inc. All other marks and trademarks are property of their respective holders.

United States:

Phone: 518.285.6000

Fax: 518.285.6070

Sales: 800.327.8627

Government Sales: 800.619.2333

Technical Support: 518.285.7283

Technical Support Fax: 518.285.6080

[pbinsight.com](http://pbinsight.com)

Asia Pacific/Australia:

Phone: +61.2.9437.6255

Fax: +61.2.9439.1773

Technical Support: 1.800.648.899

[pbinsight.com.au](http://pbinsight.com.au)

Contact information for all Pitney Bowes Software Inc. offices is located at: <http://www.pbinsight.com/about/contact-us>.

February 2010

# Table of Contents

---

<b>Chapter 1: Introduction</b> .....	<b>5</b>
<b>Product Inventory</b> .....	<b>6</b>
<b>About this Guide</b> .....	<b>6</b>
Conventions .....	6
<b>Chapter 2: Before You Begin</b> .....	<b>9</b>
<b>Permissions</b> .....	<b>10</b>
<b>System Requirements</b> .....	<b>10</b>
<b>Default Install Path</b> .....	<b>10</b>
<b>Time/Space Considerations</b> .....	<b>11</b>
<b>Installation Scenarios</b> .....	<b>11</b>
<b>Chapter 3: Installing</b> .....	<b>13</b>
<b>Evaluation Version Users</b> .....	<b>14</b>
<b>Installing to a Local Machine (Single User)</b> .....	<b>14</b>
Complete Installation .....	18
Custom Installation .....	20
<b>Installing to a Network (Shared by Multiple Users)</b> .....	<b>22</b>
Complete Network Installation .....	26
Custom Network Installation .....	28
<b>Installing the .NET Framework</b> .....	<b>32</b>
<b>Installing your Data License File</b> .....	<b>34</b>
<b>Installing the AnySite Australia Client</b> .....	<b>35</b>
Launching and AnySite Client Setup Wizard .....	36
<b>Final System Configuration</b> .....	<b>38</b>
Launching the Configurator .....	39
Importing Repository Transfer (ART) Files for your Data .....	40
Cataloging System Data if Stored to a Non-Default Location .....	41
<b>Chapter 4: Starting AnySite Australia</b> .....	<b>45</b>
<b>Logging into and Launching AnySite Australia</b> .....	<b>46</b>
<b>Handling Data Not Found Messages</b> .....	<b>46</b>
<b>Default Locations for Data</b> .....	<b>47</b>

- Chapter 5: Upgrading Your Current Installation . . . . .49**
  - Backing-Up Custom Files. . . . .50**
  - Are you upgrading from AnySite Australia 8.7.x? . . . . .50**
  - Upgrading AnySite Australia . . . . .51**
  - Updating Reports and Thematics . . . . .52**
    - Updating Standard Reports and Thematics. . . . .52
    - Updating your Custom Reports and Thematics . . . . .53
  - Upgrading the AnySite Australia Client . . . . .55**
- Chapter 6: Uninstalling . . . . .57**
  - Uninstalling the AnySite Australia Application . . . . .58**
  - Uninstalling the AnySite Australia Client . . . . .58**
- Chapter A: Performance Tuning a Network Installation . . . . .59**
  - Network Speed . . . . .60**
  - Virus Scanner Software Settings. . . . .60**

# Introduction

Welcome to AnySite Australia. System Administrators installing AnySite Australia need to read this entire document for a successful installation.

AnySite Australia helps you to analyze the relationship between store performance and market trade area demographic characteristics. AnySite Australia lets you integrate the specific data you need from various sources, so that you can connect, retrieve, report on, and map any information from your proprietary database to analyze trade area data.

Access to data is controlled using account permissions set through the AnySite Australia Configurator tool, which is installed with AnySite Australia. This allows an AnySite Administrator to restrict access to sensitive data.

For information on setting system preferences and defaults through AnySite Australia's Configurator tool, refer to the *AnySite Australia Reference* after installing AnySite Australia.

## In this chapter:

- ◆ **Product Inventory** .....6
- ◆ **About this Guide** .....6

## Product Inventory

Your copy of AnySite Australia installs the following to your system:

- AnySite Australia – Server and client software.
- Data Manager tool – For importing and exporting data from the AnySite Data Engine.
- Configurator tool – For managing AnySite Australia system settings.
- Data – Data purchased with AnySite Australia for market and site analysis.
- Tutorial data – Sample data provided to follow along with the AnySite Australia tutorial.
- Install Guide – This document, which provides installation and system configuration instructions.
- Reference Guide – Provides a reference for working with AnySite Australia, and the Data Manager and Configurator tools.

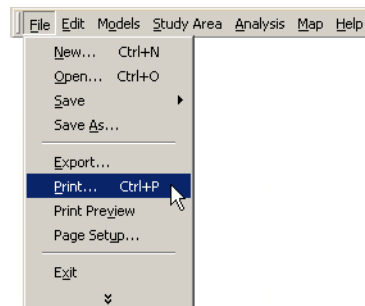
## About this Guide

This guide is organized as follows:

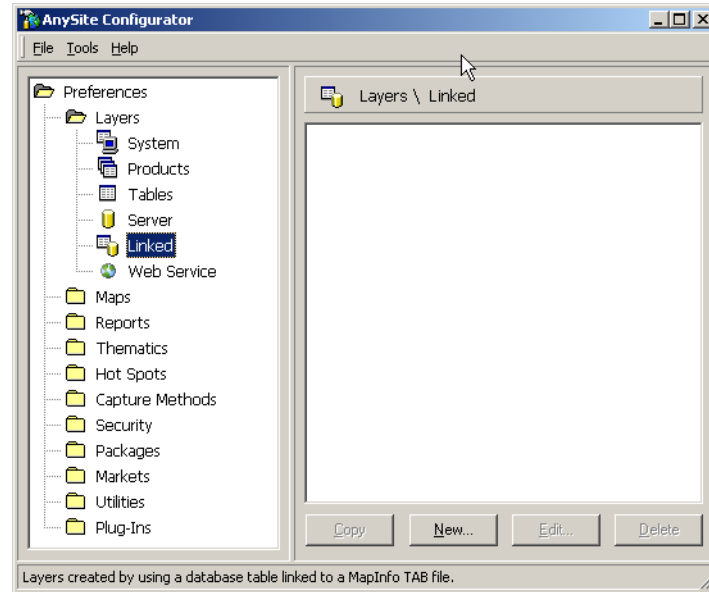
- **Chapter 2: Before You Begin** – Requirements and system setup needed.
- **Chapter 3: Installing** – Instructions for installing the AnySite Australia Application.
- **Chapter 4: Starting AnySite Australia** – Instructions on how to log in to and launch AnySite Australia.
- **Chapter 5: Upgrading Your Current Installation** – Instructions on how to upgrade your existing AnySite Australia installation to this new release.
- **Chapter 6: Uninstalling** – Instructions on how to remove AnySite Australia from your system.

## Conventions

This guide may provide full paths to menu commands. For example, **File > Print** is the same as “on the **File** menu, click **Print**”.



When referring to Configurator preferences the convention of **Preferences > Layers > Linked** is the same as “in the **Preferences** pane, click **Layers**, and then click **Linked**”.





# Before You Begin

When installing AnySite Australia, it is important to decide your installation location, and deployment environment.

**Note** If you install AnySite Australia incorrectly, you may need to remove the application from your computer and re-install it to fix any problems.

## In this chapter:

- ◆ **Permissions** .....10
- ◆ **System Requirements** .....10
- ◆ **Default Install Path** .....10
- ◆ **Time/Space Considerations** .....11
- ◆ **Installation Scenarios** .....11

## Permissions

Administrative rights to the program files directory are required for installation.

Once installed, users need read/write/modify rights to the AnySite.ini and AnySite.mdb files, which are located within the AnySite Australia application directory. Give users read/write/modify rights to the entire AnySite Australia application directory.

## System Requirements

Operating System:	<ul style="list-style-type: none"><li>• Windows XP Service Pack 2 or higher</li><li>• Windows 2000 with Service Pack 4 or higher</li><li>• Windows Server 2003 (Standard or Enterprise) Service Pack 1</li></ul>
Hardware:	<ul style="list-style-type: none"><li>• Pentium IV Processor 1.x GHz or better, with 512MB of RAM (1GB or better recommended)</li><li>• 15-inch monitor, with graphic accelerator card, 16 bit color or greater. Minimum of 800x600 resolution is required.</li></ul>
Hard Disk Space:	Dependent on the data purchased. Up to 1.5 GB.
Software:	Microsoft Word 2002, 2003, or later (recommended for viewing reports)

## Default Install Path

The default install path is C:\Program Files\MapInfo\AnySite\_XX\Data, where XX is a two-digit country code.

## Time/Space Considerations

The AnySite Australia install wizard installs both the AnySite Australia application and data (streets, demographics, and geocoder for example). The length of time for the install will range from 1-4 hours depending on the speed of your media drive and file transfer across a network. The installation of AnySite Australia cannot be stopped and restarted at a later date. Schedule enough time prior to beginning the install process.

The following chart provides an estimation of size needed when installing AnySite Australia and its corresponding data. The footprint will change depending upon the geography purchased.

Name	Approximate Disk Space Needed
AnySite Australia Program	500 MB
Application Data	300 MB
Demographic Data	400 MB
OEM MapMarker Plus®	300 MB
OEM StreetPro®	450 MB

You have the option to install the data to a location separate from the AnySite Australia application. The most common scenario is to install the application and data to the same machine.

## Installation Scenarios

During the install you have the option to perform a Single or a Shared setup type. A Single setup type is for a local installation, where a single user installs AnySite Australia and the AnySite Australia Client to a local machine. A Shared setup type is for a network installation where multiple users on a network will access AnySite Australia.

For questions regarding installation scenarios please contact AnySite Australia Technical Support via email at [asiapac.support@mapinfo.com](mailto:asiapac.support@mapinfo.com) or +61 7 3844 7744. A free-phone number for Australia will be provided when a technical support contract is activated.

### ***Local Installation (Single User)***

A local installation installs and runs AnySite Australia on a single machine. Choose a local installation if only a single user is going to access AnySite Australia.

For optimal performance of AnySite Australia on a local machine, install the entire application: both server and client software.

### ***Network Installation (Shared by Multiple Users)***

A network installation installs AnySite Australia (executable and all associated files) onto a network of machines. Choose a network installation if multiple users are going to access AnySite Australia. Install AnySite Australia from the console of the server where AnySite Australia will reside, and install the AnySite Australia Client onto each user's local machine where they will run AnySite Australia from.

If you are installing to the network from a local machine, you must have a mapped drive to your network location. The mapped drive is only required for the installation process. UNC (Universal Naming Convention) paths may be used to run the application from a network. Refer to **Final System Configuration in Chapter 3 on page 38**.

# Installing

To successfully install AnySite Australia, read this entire chapter before beginning. Refer to **Before You Begin in Chapter 2 on page 9** for pre-installation requirements and planning.

During the installation procedure, you must make some decisions about your installation. Please read these instructions before installing, so that your installation runs smoothly.

Follow the directions for the **Final System Configuration on page 38** after completing the main installation. These steps are required for every installation and will ensure that your AnySite Australia installation is successful.

## In this chapter:

- ◆ **Evaluation Version Users** .....14
- ◆ **Installing to a Local Machine (Single User)** .....14
- ◆ **Installing to a Network (Shared by Multiple Users)** .....22
- ◆ **Installing the .NET Framework** .....32
- ◆ **Installing your Data License File** .....34
- ◆ **Installing the AnySite Australia Client** .....35
- ◆ **Final System Configuration** .....38

## Evaluation Version Users

If you currently have an evaluation version of AnySite Australia installed on your machine, you must uninstall the evaluation version prior to installing the full version.

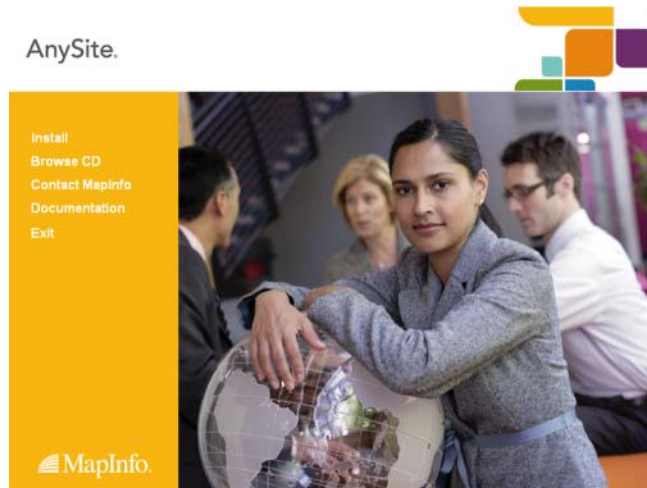
### Installing to a Local Machine (Single User)

To Install AnySite Australia onto a local machine:

1. Place the AnySite Australia Installation DVD in the media drive.

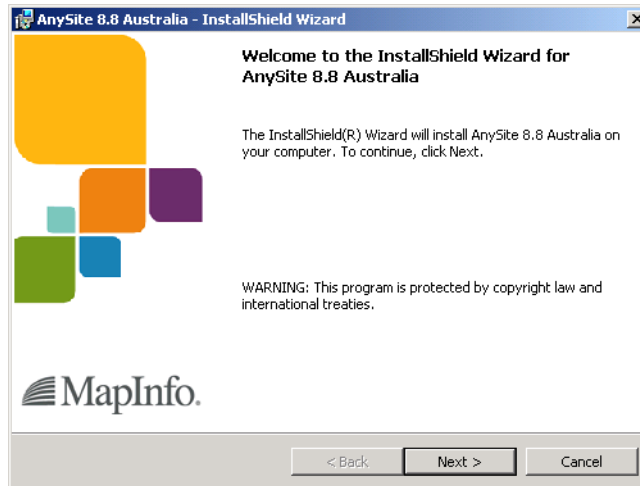
If the installation does not automatically start, click **Run** from the Microsoft Start menu, and click the **Browse** button. Go to the media drive and select **Launch.exe**.

Select **Install**, and then select **Install AnySite**.



- The Welcome screen displays.

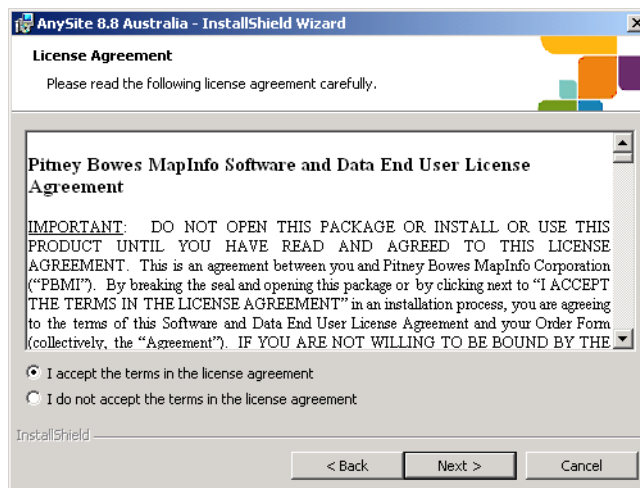
Click **Next** to continue.



- The License Agreement screen displays.

Carefully read the License Agreement. Select **I accept the terms in the license agreement** to accept the terms of the agreement.

Click **Next** to continue the installation process.



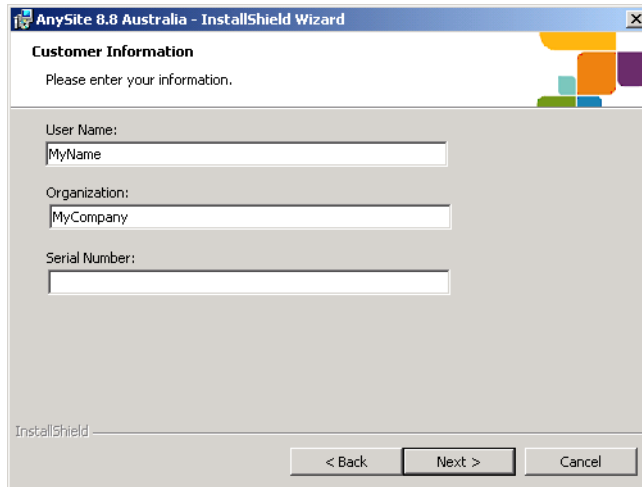
- The Customer Information screen displays.

Enter your name, organization name, and serial number (all three fields are required).

## Installing to a Local Machine (Single User)

The Serial Number is located on the outside of the AnySite Australia box. This number is required for the installation to continue. If you are unable to locate your serial number, contact your sales representative for assistance (for contact information, see [Installation Scenarios in Chapter 2 on page 11](#)).

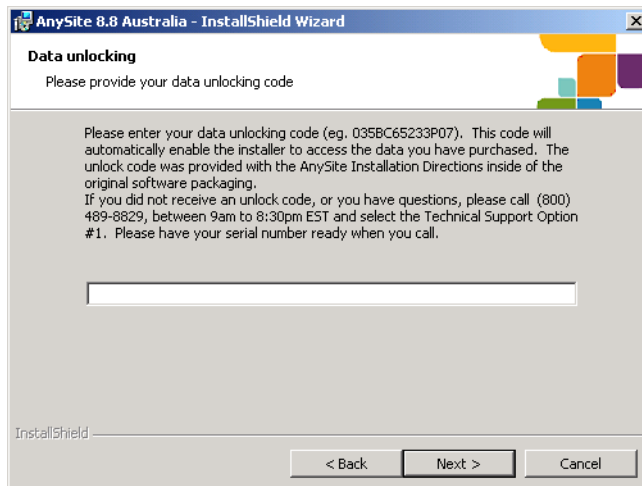
Click **Next** to continue.



5. The Data Unlocking screen displays.

Enter your Unlocking Code. The unlocking code is included in the *Unlock Code and Serial Number* document included in the software box. The serial number and unlock code are connected to each other, if you receive a message stating your unlock code is invalid, recheck your serial number to see if it was keyed in properly.

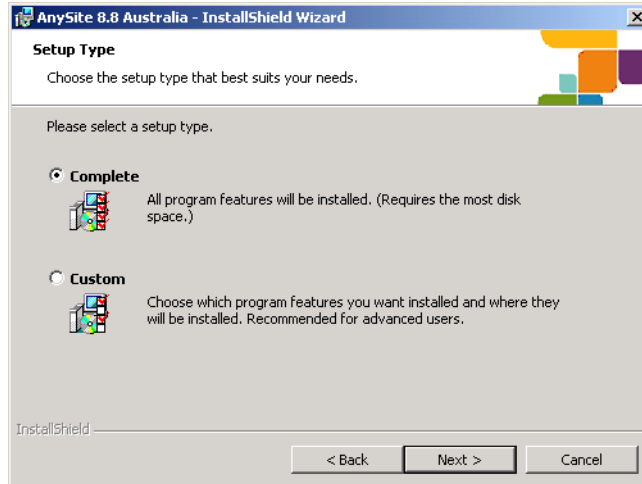
Click **Next** to continue.



6. The Setup Type screen displays.

Select Complete or Custom, and then Click **Next** to continue.

- Complete installs AnySite Australia and all of its components.
- Custom lets you select which program features and data to install, and lets you install them to different locations either on your hard drive or on a network drive.



If you chose Complete, refer to [Complete Installation](#) for further instructions. If you chose Custom, refer to [Custom Installation on page 20](#) for further instructions.

### Complete Installation

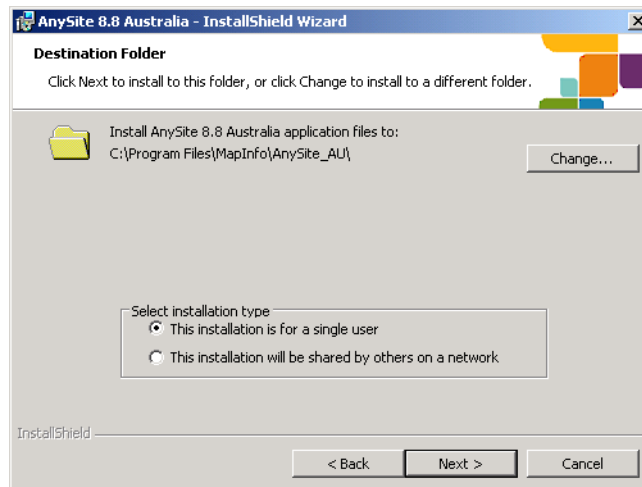
To continue with a Complete installation:

1. The Destination Folder screen displays after clicking **Complete** in the Setup screen.

Choose **This installation is for a single user** to install AnySite Australia and the AnySite Australia Client to a local machine.

If you would like to change the default installation location, click **Change** to browse to a different location.

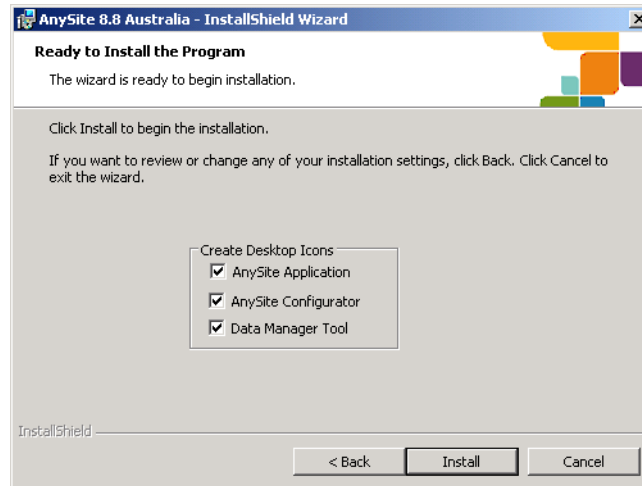
Click **Next** to continue.



- The Ready to Install the Program screen displays.

If you chose to deselect desktop icons, then you can launch these features from the Microsoft Start menu by clicking Programs > MapInfo > AnySite.

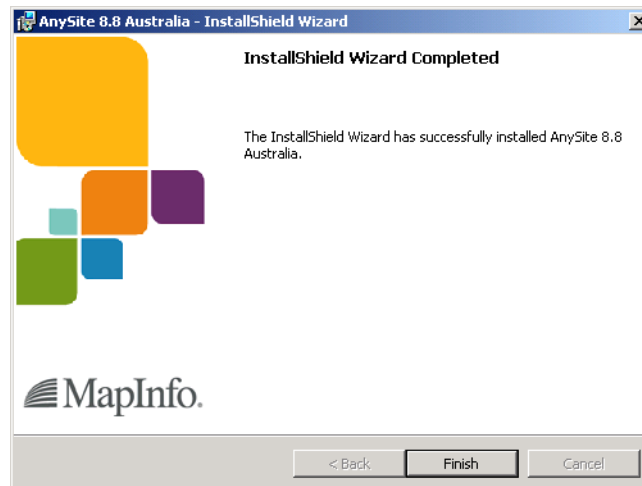
Click **Install** to begin the Installation process.



**Note** If the .NET Framework License Agreement screen displays, then you do not have a compatible version of Microsoft .NET Framework installed. To complete your installation, proceed to [Installing the .NET Framework on page 32](#).

- The Installation Complete screen displays.

Click **Finish** to close the AnySite Australia Installation wizard.



- Complete the installation by rebooting the system.

After rebooting, continue to [Installing your Data License File on page 34](#).

### Custom Installation

This section continues from **step 6** in **Installing to a Local Machine (Single User)** after choosing Custom in the Setup screen. The options for a Custom Setup include application files and data.

You will have the option to select to install AnySite Australia features, such as data, to your local hard drive or to a network drive. If installing to a network drive, then map the drive first. You may also choose not to install a feature.

**Note** Installing features to a network drive is **not** the same as installing AnySite Australia on a network to be shared by multiple users.

For optimal performance on a local machine, install everything to the local machine.

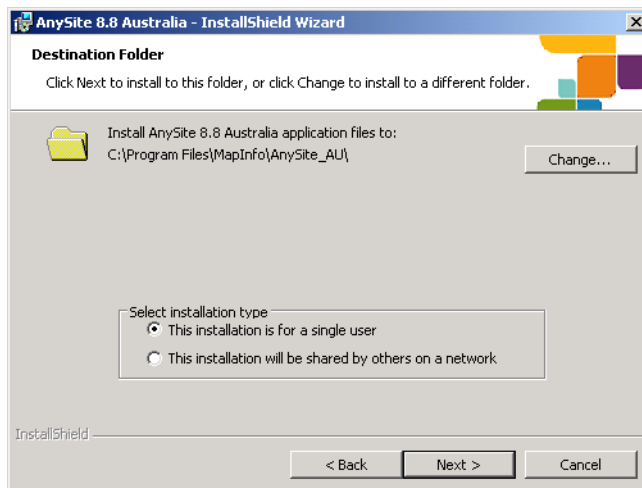
To continue with a Custom installation:

1. The Destination Folder screen displays after clicking **Custom** in the Setup screen.

Choose **This installation is for a single user** to install AnySite Australia and the AnySite Australia Client to the local machine.

If you would like to change the default installation location, click **Change** to browse to a different location.

Click **Next** to continue.

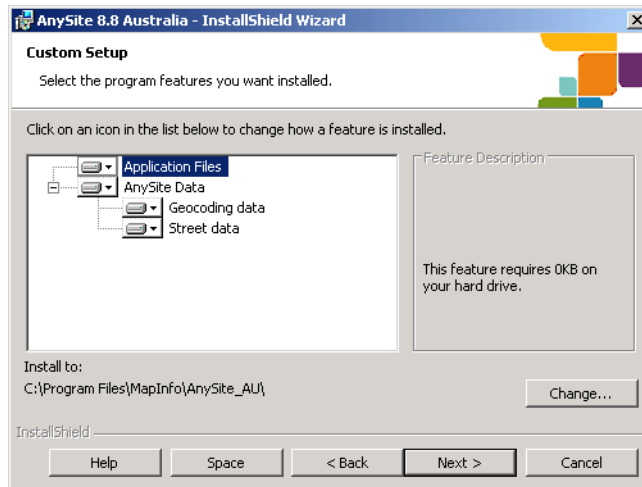


2. The Custom Setup screen displays.

By default, the wizard installs all features. To deselect a feature, click the feature icon and select **This feature will not be available**. Only selected features install.

Features install to your local hard drive in the folder indicated. To specify a different folder, click **Change**.

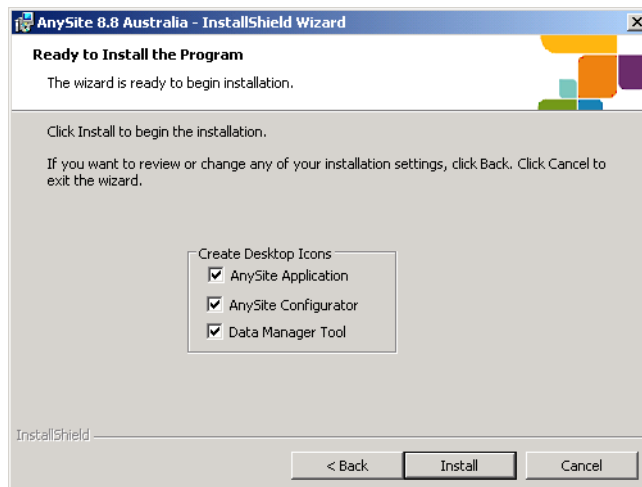
Click **Next** to continue.



### 3. The Ready to Install the Program screen displays.

If you chose to deselect desktop icons, then you can launch these features from the Microsoft Start menu by clicking Programs > MapInfo > AnySite.

Click **Install** to begin the Installation process.



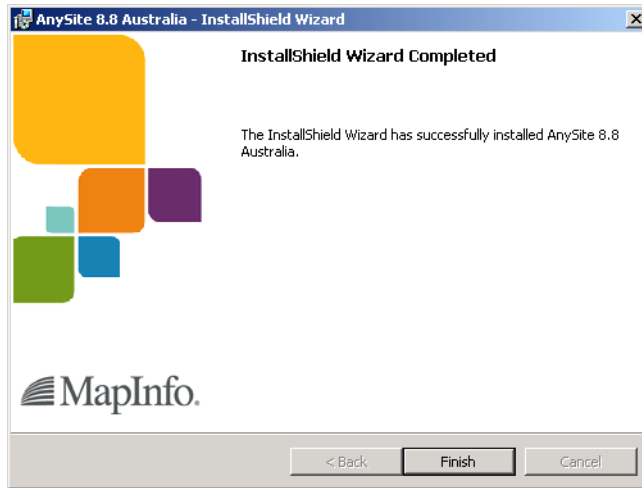
**Note** If the .NET Framework License Agreement screen displays, then you do not have a compatible version of Microsoft .NET Framework installed. To complete your installation, proceed to [Installing the .NET Framework on page 32](#).

## Installing to a Network (Shared by Multiple Users)

---

4. The Installation Complete screen displays.

Click **Finish** to close the AnySite Australia Installation wizard.



5. Complete the installation by rebooting the system.

After rebooting, continue to [Installing your Data License File on page 34](#).

## Installing to a Network (Shared by Multiple Users)

In a shared setup, you install AnySite Australia to a single machine in a network of connected machines. You then install the AnySite Australia Client on to those machines in the network that access AnySite Australia.

This section describes how to install AnySite Australia. After completing the instructions in this section, you will install the AnySite Australia Client on to **all** machines that will access AnySite Australia.

**Note** There is an option to install the AnySite Australia Client as part of this main installation if the machine used to install to the network location will also be used to run AnySite Australia.

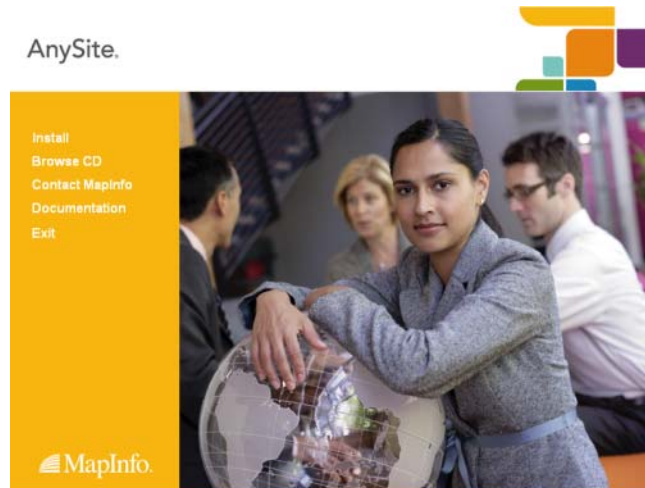
You must have a mapped drive to your network location and full write permission to the drive to install the AnySite Australia Client. The mapped drive is only required for the installation process.

To Install AnySite Australia on a network:

1. Place the AnySite Australia Installation DVD in the media drive.

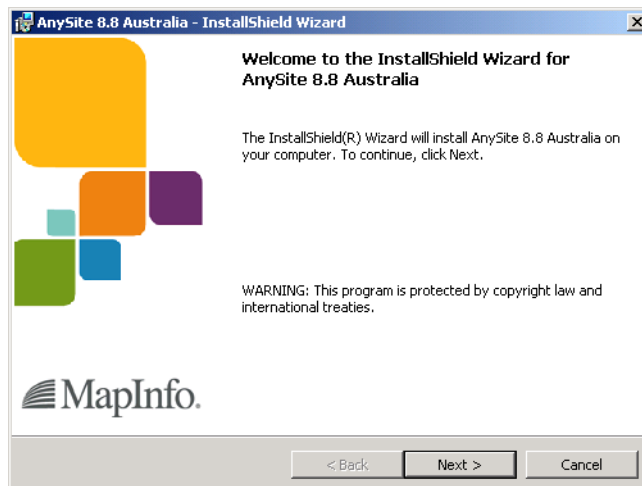
If the installation does not automatically start, click **Run** from the Microsoft Start menu, and click the **Browse** button. Go to the media drive and select **Launch.exe**.

Select **Install**, and then select **Install AnySite**.



2. The Welcome screen displays.

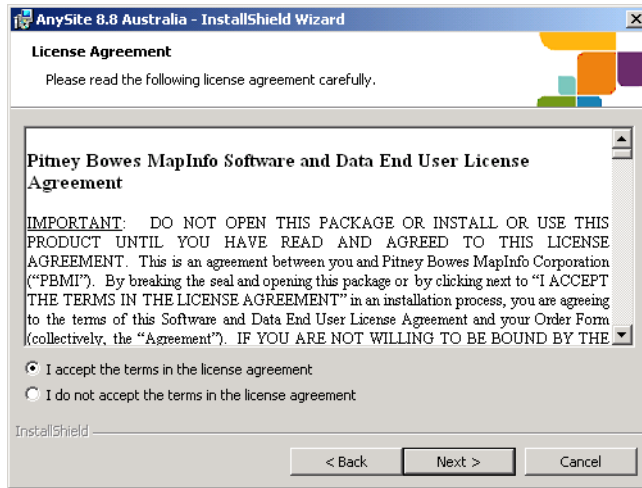
Click **Next** to continue.



3. The License Agreement screen displays.

Carefully read the License Agreement. Select **I accept the terms in the license agreement** to accept the terms of the agreement.

Click **Next** to continue the installation process.

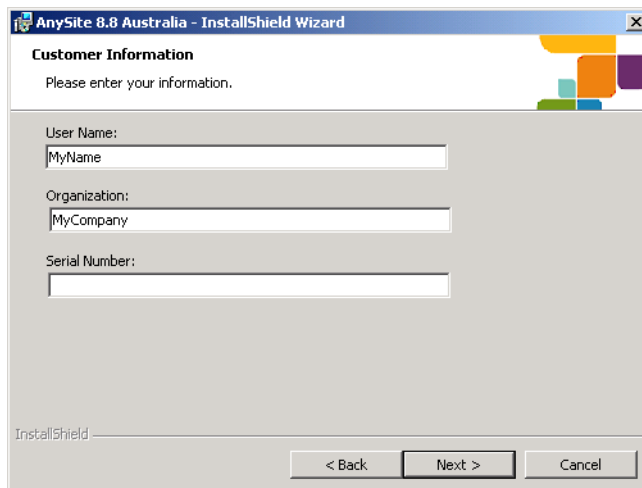


4. The Customer Information screen displays.

Enter your name, organization name, and serial number (all three fields are required).

The Serial Number is located on the outside of the AnySite Australia box. This number is required for the installation to continue. If you are unable to locate your serial number, contact your sales representative for assistance (for contact information, see [Installation Scenarios in Chapter 2 on page 11](#)).

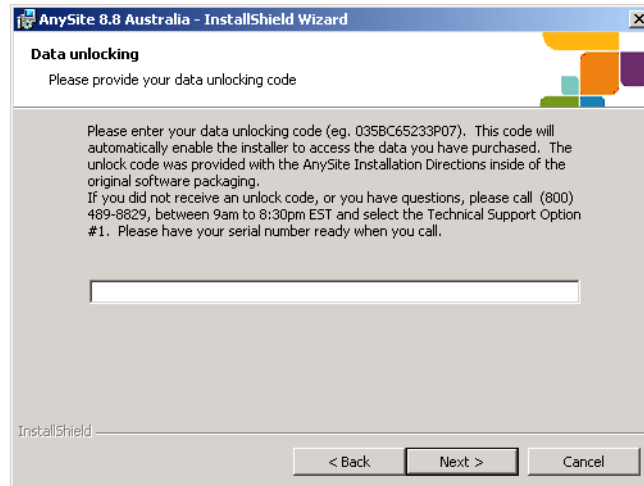
Click **Next** to continue.



5. The Data Unlocking screen displays.

Enter your Unlocking Code. The unlocking code is included in the *Unlock Code and Serial Number* document included in the software box. The serial number and unlock code are connected to each other, if you receive a message stating your unlock code is invalid, recheck your serial number to see if it was keyed in properly.

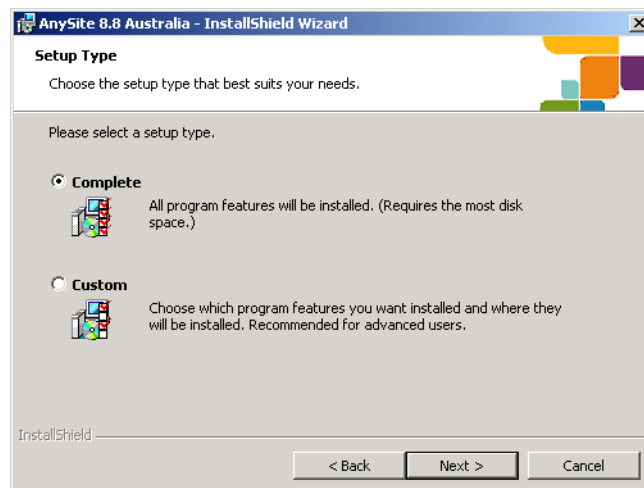
Click **Next** to continue.



6. The Setup Type screen displays.

Select Complete or Custom, and then click **Next** to continue.

- Complete installs AnySite Australia and all of its components.
- Custom lets you select which program features and data to install, and lets you install them to different locations either on your hard drive or on a network drive.



If you chose Complete, refer to [Complete Network Installation on page 26](#) for further instructions.  
If you chose Customer, refer to [Custom Network Installation on page 28](#) for further instructions.

### Complete Network Installation

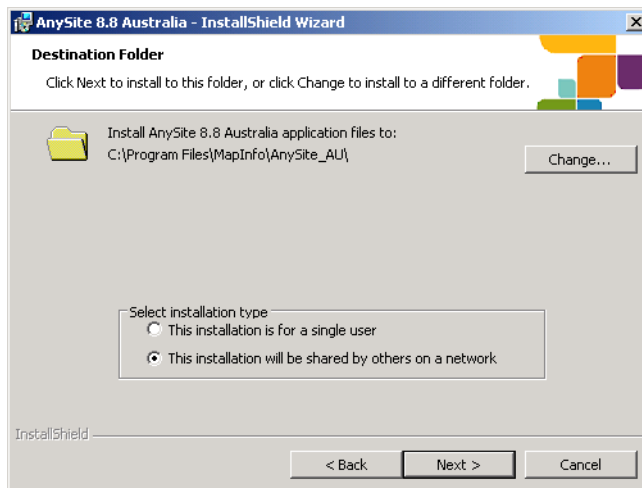
This section continues from [step 6 in Installing to a Network \(Shared by Multiple Users\) on page 22](#), after choosing Complete in the Setup screen.

To continue with a complete installation:

1. The Destination Folder screen displays.

Choose **This installation will be shared by others on a network** and do one of the following:

- Accept the default destination folder by clicking **Next** to install on this local machine.
- Change the destination folder by clicking **Change** to install to a machine on the network by selecting a mapped drive (you will require full write permission to the location). The Change Current Destination Folder screen displays to select a location on the network.

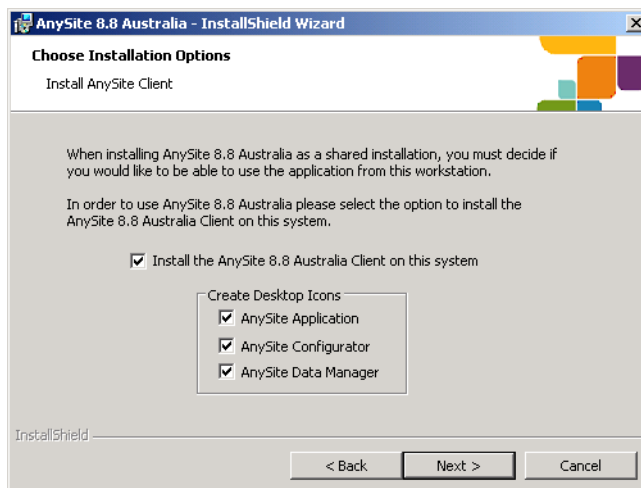


2. The Choose Installation Options screen displays.

Deselect the AnySite Australia Client option if you do not want to install it on this machine.

Deselect the desktop icon options if you do not want to install them. You can launch these features from the Microsoft Start menu by clicking Programs > MapInfo > AnySite.

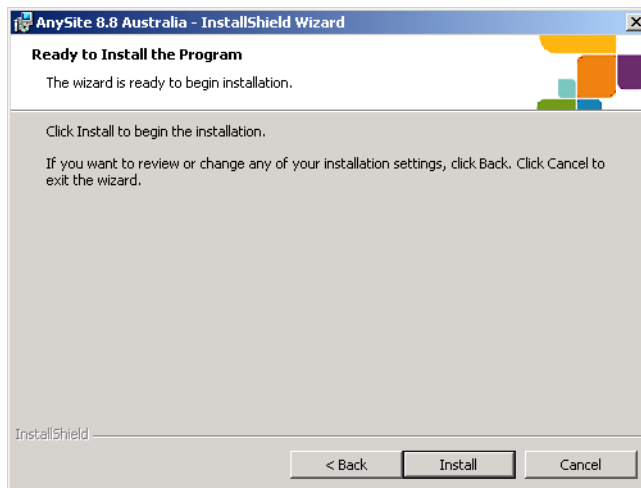
Click **Next** to continue.



**Note** If installing to Windows Server 2003, then the AnySite Australia Client separately as described in [Installing the AnySite Australia Client on page 35](#).

3. The Ready to Install the Program screen displays.

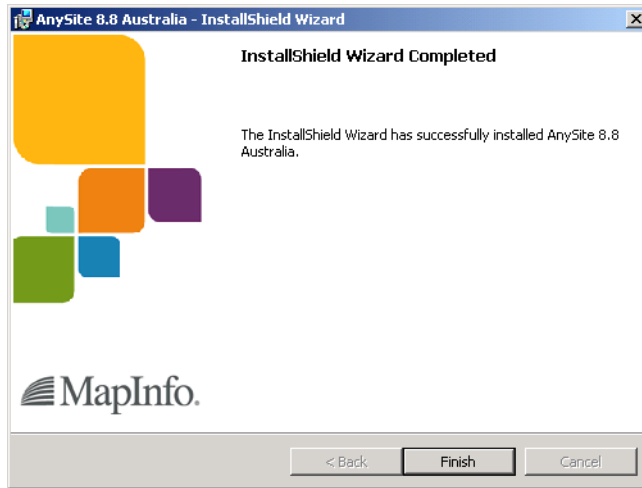
Click **Install** to begin the Installation process.



**Note** If the .NET Framework License Agreement screen displays, then you do not have a compatible version of Microsoft .NET Framework installed. To complete your installation, proceed to [Installing the .NET Framework on page 32](#).

4. The Installation Complete screen displays.

Click **Finish** to close the AnySite Australia Installation wizard.



5. Complete the installation by rebooting the system.

You must reboot the system and then continue to [Installing your Data License File on page 34](#).

## Custom Network Installation

This section continues from [step 6 in Installing to a Network \(Shared by Multiple Users\) on page 22](#), after choosing Custom in the Setup screen. The options for a Custom Setup include application files and data packages.

When you select a feature in [step 3](#) of the following procedure, a menu displays allowing you to choose to install the feature and its sub-features to your local hard drive or a network drive. If installing to a network drive, then map the drive for the installation.

**Note** Installing components to a network drive is **not** the same as installing AnySite Australia on a network to be shared by multiple users.

To continue with a Custom installation:

1. The Destination Folder screen displays.

Choose **This installation will be shared by others on a network** and do one of the following:

- Accept the default destination folder by clicking **Next** to install on this local machine.
- Change the destination folder by clicking **Change** to install to a machine on the network by selecting a mapped drive (you will require full write permission to the location). The Change Current Destination Folder screen displays to select a location on the network.

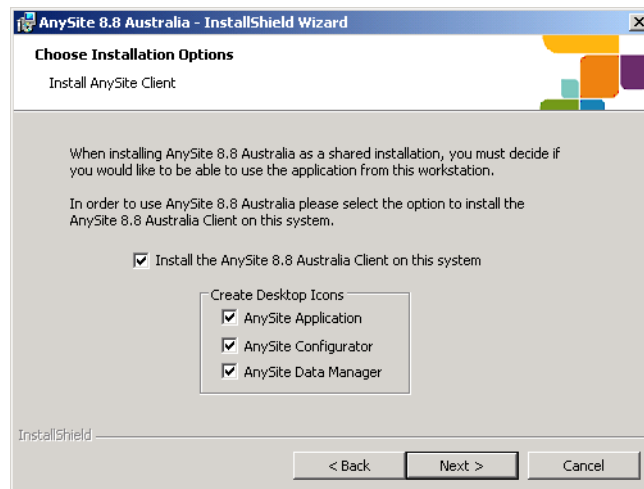


2. The Choose Installation Options screen displays.

Deselect the AnySite Australia Client option if you do not want to install it on this machine.

Deselect the desktop icon options if you do not want to install them. You can launch these features from the Microsoft Start menu by clicking Programs > MapInfo > AnySite.

Click **Next** to continue.



**Note** If installing to Windows Server 2003, then install the AnySite Australia Client separately as described in [Installing the AnySite Australia Client on page 35](#).

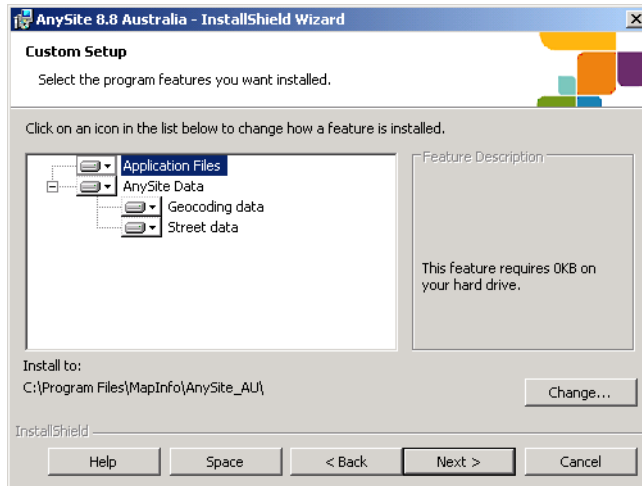
## Installing to a Network (Shared by Multiple Users)

3. The Custom Setup screen displays.

By default, the wizard installs all features. To deselect a feature, click the feature icon and select **This feature will not be available**. Only selected features install.

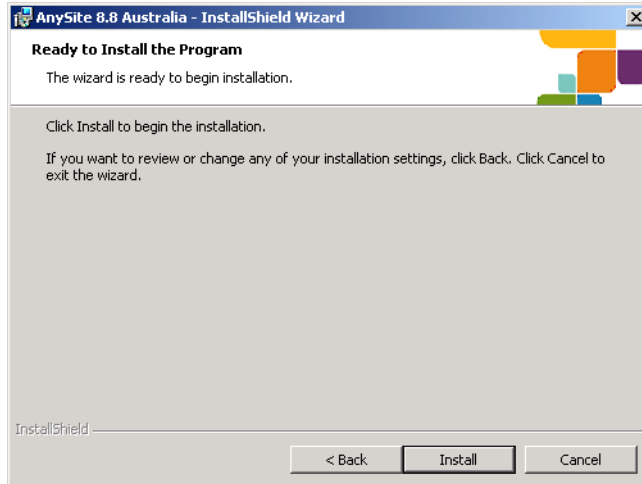
Features install on your local hard drive in the folder indicated. To specify a different folder, click **Change**.

Click **Next** after the custom features have been selected.



4. The Ready to Install the Program screen displays.

Click **Install** to begin the Installation process.



**Note** If the .NET Framework License Agreement screen displays, then you do not have a compatible version of Microsoft .NET Framework installed. To complete your installation, proceed to [Installing the .NET Framework on page 32](#).

5. The Installation Complete screen displays.

Click **Finish** to close the AnySite Australia Installation wizard.



6. Complete the installation by rebooting the system.

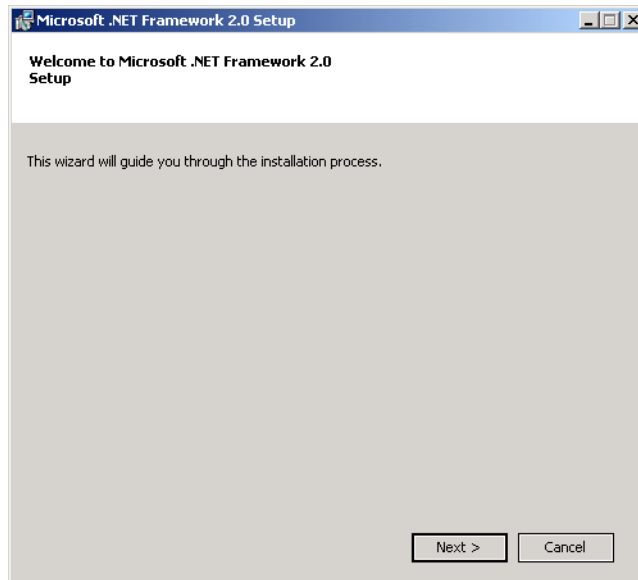
You must reboot the system and then continue to [Installing your Data License File on page 34](#).

## Installing the .NET Framework

This part of the installation occurs when you do not already have a compatible version of Microsoft .NET framework installed on your machine. Microsoft .NET Framework version 2.0 is required to run AnySite Australia. (For information about the Microsoft.NET framework, see [www.microsoft.com/net](http://www.microsoft.com/net).)

1. The Welcome to Microsoft .NET Framework 2.0 Setup dialog displays.

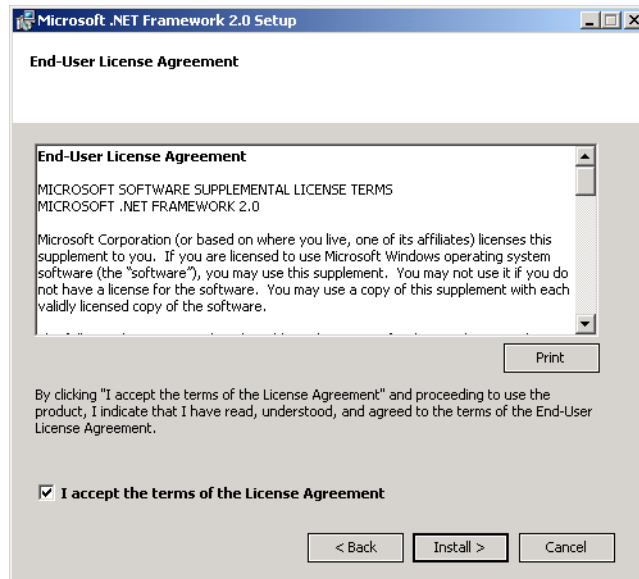
Click **Next** to continue.



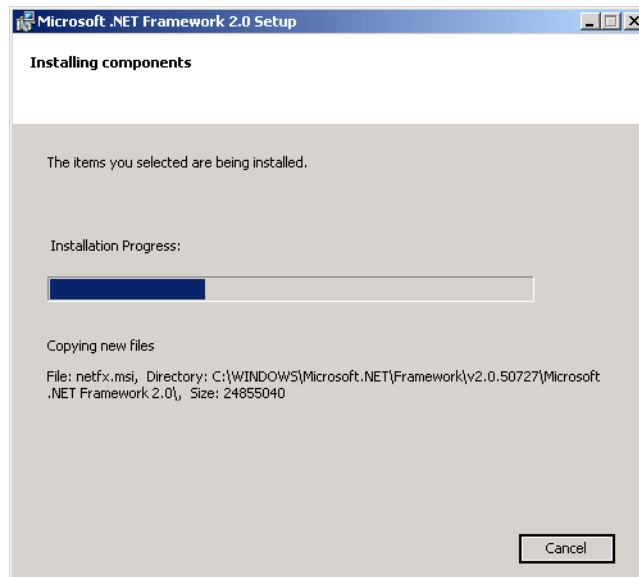
2. The License Agreement screen displays.

Carefully read the License Agreement. Select "I accept" to agree to the terms.

Click **Install** to continue the installation process.



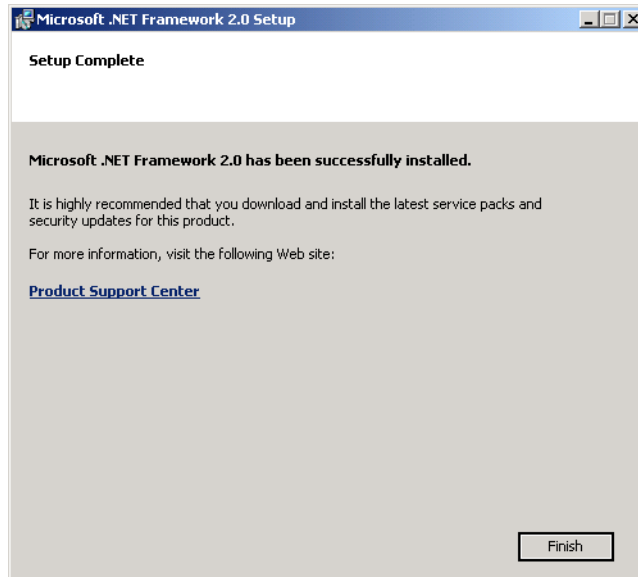
The Installing .net screen displays with a progress bar indicating the status of the installation process.



## Installing your Data License File

---

3. The Installation Complete screen displays.  
Click **Finish** to complete the .NET installation.



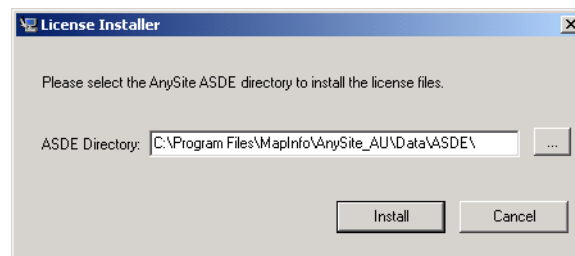
You must reboot the system and then continue to [Installing your Data License File on page 34](#).

## Installing your Data License File

A unique license ships with your copy of AnySite to give you access to the data you purchased. This license is on a license CD that is included with your AnySite Australia media.

To Install the data license file:

1. Place the License CD in the media drive.  
If the installation does not automatically start, click **Run** from the Microsoft Start menu, and click the **Browse** button. Go to the media drive and select **INSTALL.EXE**.
2. In the License Installer screen click **Install** to copy the license file to the AnySite Australia installation location (C:\Program Files\MapInfo\AnySite\_AU\Data\ASDE for example).



3. A Notice dialog displays.

Click **OK** when prompted that the installation is complete.

If you selected a single user setup installation, continue to **Final System Configuration on page 38**.

If you select a multiple user setup installation or you installed to the Windows 2003 operating system, continue to **Installing the AnySite Australia Client** instructions.

## Installing the AnySite Australia Client

The AnySite Australia Client allows a user to access the AnySite Australia application.

### ***Single User Installations:***

If you selected a Single setup type installation on Windows XP, then you do not have to install the AnySite Client. The Client installs by default for you. Skip to **Final System Configuration on page 38**.

If you installed on Windows 2003 server then you must install the Client. Follow the instructions in the next section **Launching and AnySite Client Setup Wizard on page 36**.

### ***Multiple User Installations:***

If you selected a Shared (network) setup type, so that multiple users can access AnySite Australia, then install the AnySite Australia Client on each machine that will access AnySite Australia.

The AnySite Client Installer is a ClientSetup.exe file located under the AnySite installation folder (C:\Program Files\MapInfo\AnySite\_AU by default). Map the drive to the AnySite installation folder where the user will be running AnySite from, and then run the ClientSetup.exe file from the client machine (as described in the next section **Launching and AnySite Client Setup Wizard**).

Map a drive on each client machine using the same map drive letter. After running the Client installation on each client machine, run the final system setup as described under **Final System Configuration on page 38**.

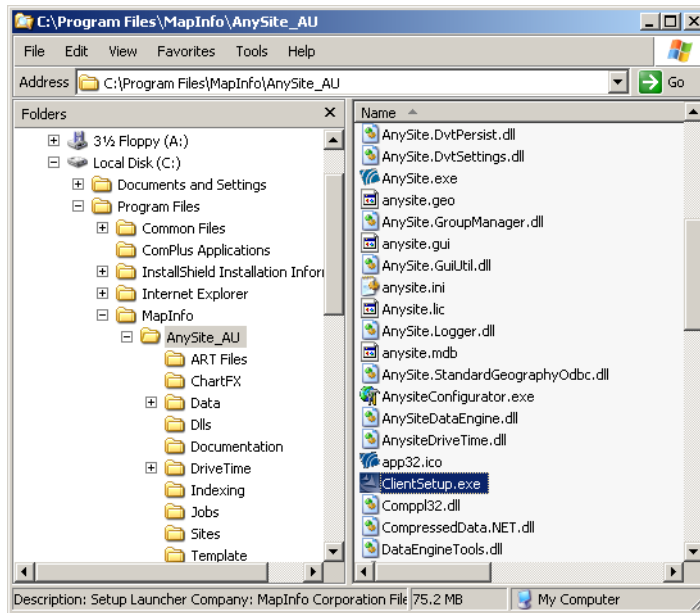
The mapped drive is only required for the installation process. Use UNC to run the application from a network.

**Note** The Client setup creates shortcuts pointing to the mapped drive not the UNC.

## Launching and AnySite Client Setup Wizard

To launch the Client Setup wizard to install AnySite Australia Client:

1. Locate the ClientSetup.exe file in the folder where AnySite Australia is installed. By default, AnySite Australia installs to C:\Program Files\MapInfo\AnySite\_AU. Double-click on the **ClientSetup.exe** file to launch the Client Setup wizard.



If the Welcome to Microsoft .NET Framework 2.0 Setup screen displays, follow the instructions under [Installing the .NET Framework on page 32](#) and then continue with the next step.

- The Welcome screen displays.

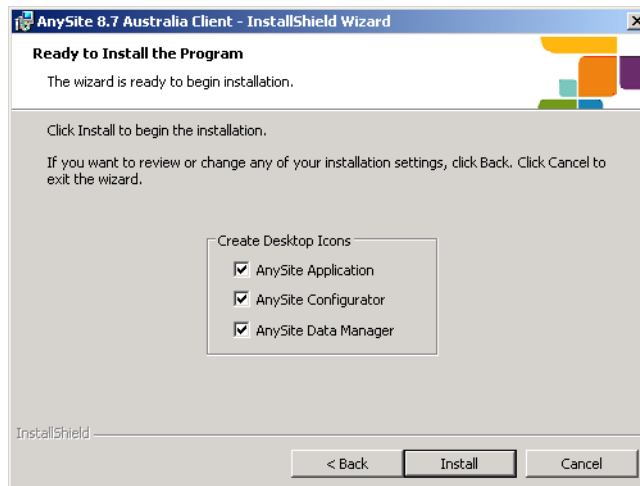
Click **Next** to continue.



- The Ready to Install the Program screen displays.

Select which desktop Shortcuts to create. (The AnySite Australia Configurator requires AnySite Australia administrative permissions to access.)

Click **Install** to begin the Installation process.

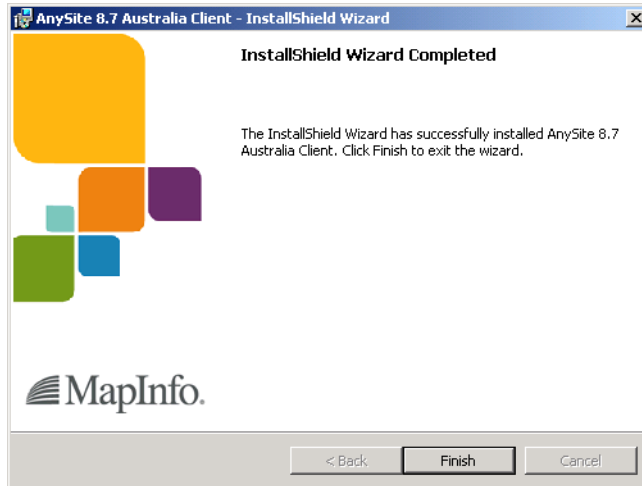


## Final System Configuration

---

4. The InstallShield Wizard Completed screen displays once the AnySite Australia Client has been installed.

Click **Finish** to complete the Installation.



The help systems for AnySite and for the Data Manager do not display on AnySite Client machines due to a Microsoft network security setting. You must copy the help files to the client machines, so that users can open them. Copy the files called MapInfoAnySite.chm and AnySiteDataManager.chm files from the AnySite Documentation folder (C:\Program Files\MapInfo\AnySite\_AU\Documentation) to the corresponding folder on each client machine.

Proceed to **Final System Configuration**.

## Final System Configuration

Before launching AnySite Australia for the first time, you must complete the steps in the following sections:

- **Launching the Configurator**
- **Importing Repository Transfer (ART) Files for your Data**
- **Cataloging System Data if Stored to a Non-Default Location**

These settings are made in the Configurator, which is a utility for managing your AnySite Australia installation.

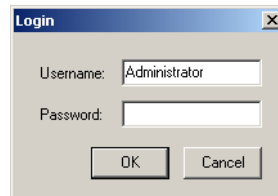
If you installed AnySite Australia to a network location, so that the AnySite Australia Client is on a different machine, then perform the steps in each of these sections for each client machine.

## Launching the Configurator

To launch the AnySite Australia Configurator and complete the setup of your installation:

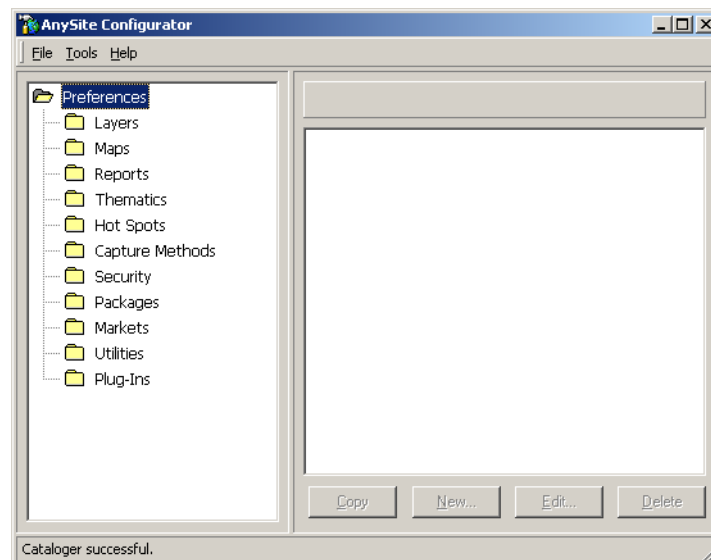
1. Either click the AnySite Australia Configurator icon on your desktop or click **Programs > MapInfo > AnySite AU > AnySite Configurator** in the Microsoft **Start** menu.
2. The Login dialog opens.

Enter the default user name and password when prompted: type *Administrator* for the username and leave the password blank. Click **OK** to proceed. Usernames are case sensitive, so make sure Administrator has a capital "A".



The Cataloger, a utility accessible from the Configurator, will scan several settings for AnySite Australia; you may receive a message that the Cataloger will adjust these settings. If at a later time you receive this message, then rerun the Cataloger as described under [Cataloging System Data if Stored to a Non-Default Location on page 41](#)

3. The AnySite Australia Configurator opens.



Proceed to [Importing Repository Transfer \(ART\) Files for your Data](#).

## Importing Repository Transfer (ART) Files for your Data

After installing your license file, you must import repository transfer (ART) files, which contain reports, thematics, and other settings. Reports are data dependent. If you run a report and you have not purchased the accompanying data for the report, then a "data not licensed" message displays.

### Determine Which ART Files to Import

Use the following table to determine which ART files to import relative to the data you purchased and are licensed for. You must import the corresponding ART files using the Configurator.

<b>MapInfo Australia</b>	
<b>Bundle</b>	<b>ART File</b>
Standard/BCP (Basic Community Profile)	MapInfo Australia Census 2006 Bundle Reports.art MapInfo Australia Census 2006 Thematics.art
All MapInfo Expenditure	MapInfo Australia Expenditure Reports.art
Other Capital Housing Costs.	MapInfo Australia Other Capital Housing Costs.art
Total Alcoholic Beverages	MapInfo Australia Total Alcoholic Beverages.art
Total Clothing and Footwear	MapInfo Australia Total Clothing and Footwear.art
Total Domestic Fuel and Power	MapInfo Australia Total Domestic Fuel and Power.art
Total Domestic Fuel and Power	MapInfo Australia Total Food & Non-Alcoholic Beverages.art
Total HH Services-Operations	MapInfo Australia Total HH Services-Operations.art
Total Household Furnishings	MapInfo Australia Total Household Furnishings.art
Total Housing Costs	MapInfo Australia Total Housing Costs.art
Total Medical and Health Care	MapInfo Australia Total Medical and Health Care.art
Total Misc Goods and Services	MapInfo Australia Total Misc Goods and Services.art
Total Personal Care	MapInfo Australia Total Personal Care.art
Total Recreation	MapInfo Australia Total Recreation.art
Tobacco Products	MapInfo Australia Total Tobacco Products.art
Total Transportation	MapInfo Australia Total Transportation.art

**Note** Contact your sales representative with questions about which data bundles you have a license for.

## Import ART Files Using the Configurator

To import the ART files for your data in the Configurator:

1. Click **Tools > Importing Preferences** in the AnySite Australia Configurator menu.
2. In the Import Preferences dialog, select the \*.art file to import (according to the data bundle that you purchased, as identified in the preceding table) and then click **Open**.

You may need to select the **Look in** list to locate the \*.art files the **ART Files** folder. The default location is C:\Program Files\MapInfo\AnySite\_AU\Art Files.

3. In the Select Preferences to Import dialog, select all of the preferences in the list, by pressing the **Ctrl** key, and then click **OK**.
4. Repeat these steps for each ART file to import (if you have licensed data outside the base demographic offering).

You have completed the system configuration and are now ready to launch AnySite Australia, proceed to **Chapter 4: Starting AnySite Australia**.

If you installed the data supplied with AnySite to a non-default location, then proceed to **Cataloging System Data if Stored to a Non-Default Location** before launching AnySite Australia.

## Cataloging System Data if Stored to a Non-Default Location

If the data supplied with AnySite was installed to a non-default location, then configure AnySite Australia to the location of the data files using the AnySite Australia Configurator as described in this section.

Shared (network) installations must install the AnySite Australia Client before continuing. If you have not already done so, see **Installing the AnySite Australia Client on page 35**.

To catalog the data stored in a non-default location, in the Configurator:

1. Click **Tools > Cataloger** in the AnySite Australia Configurator menu.
2. In the Disk Drives to Catalog dialog, check all the drives that contain AnySite Australia and any additional data for use with AnySite.

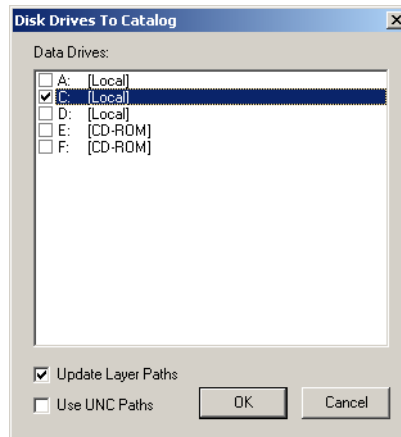
If you installed StreetPro, then select its data directories for cataloging. The default StreetPro location is C:\Program Files\MapInfo\Professional X.X\SPXXXX.

## Final System Configuration

---

If you installed AnySite Australia to a network location, so that the AnySite Australia Client is on a different machine, then select the AnySite Australia installation directory (which will be a mapped drive). If you could not use the same drive letter when mapping drives on the client machines, then you must also select the **Use UNC Paths** check box.

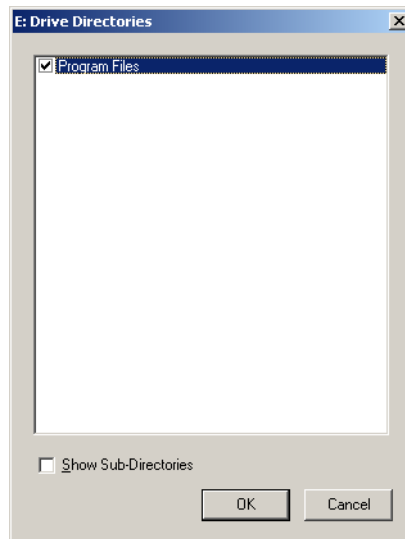
Ensure that the **Update Layer Paths** check box is selected to fix any invalid paths, and then click **OK**.



**Note** The Update Layer Paths check box updates paths to tables that may be invalid. The Use UNC Paths check box records the Universal Naming Convention (UNC) location to the data. UNC codes are used in network deployments where consistent network drive mappings for each user are not guaranteed. The Cataloger still requires the drives be mapped on the machine running the cataloger.

**Note** You must use the same drive letter for all client installations.

3. In the Drive Directories dialog, check all the drives that contain AnySite Australia data, and then click **OK**.



You have completed the system configuration and are now ready to launch AnySite Australia, proceed to [Chapter 4: Starting AnySite Australia](#).

**Note** You must reboot the system before running AnySite Australia for the first time.

Run the Cataloger after purchasing additional data sources or when moving data sources, so that AnySite Australia recognizes the data.



# Starting AnySite Australia

This chapter describes how to launch AnySite Australia.

## In this chapter:

- ◆ Logging into and Launching AnySite Australia .....46
- ◆ Handling Data Not Found Messages .....46
- ◆ Default Locations for Data.....47

## Logging into and Launching AnySite Australia

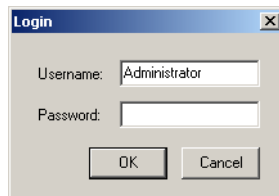
If you have not yet run the final system configurations using the Configurator, then you must do so first, see [Final System Configuration in Chapter 3 on page 38](#).

**Note** You must reboot the system before running AnySite Australia for the first time.

To start AnySite Australia:

1. Either click the AnySite Australia icon on your desktop or click **Programs > MapInfo > AnySite AU** in the Microsoft **Start** menu.
2. The Login dialog opens.

Enter the default user name and password when prompted: type *Administrator* for the username and leave the password blank. Click **OK** to proceed. Usernames are case sensitive, so make sure Administrator has a capital "A".



**Note** If you receive a data not found message, then proceed to [Handling Data Not Found Messages](#).

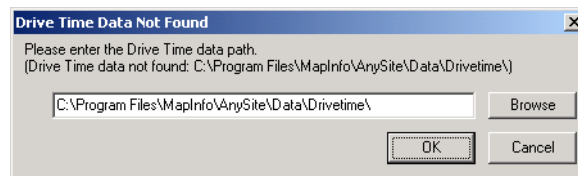
AnySite Australia opens. Refer to the Tutorial section in the *AnySite Australia Reference* for an overview of how to work with AnySite Australia.

## Handling Data Not Found Messages

The first time you launch AnySite Australia, you may be prompted to locate data files if they are installed to a non-default location.

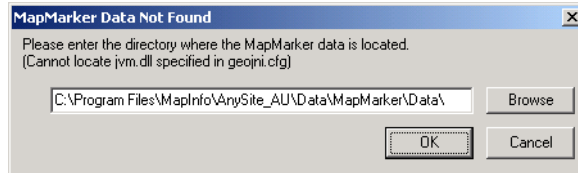
### **Drive Time Data Not Found**

When launching AnySite Australia the first time, you may get a Drive Time Data Not Found message regarding the location of the Drive Time Data. Use the Browse button in the message dialog to navigate to the proper directory (C:\Program Files\MapInfo\AnySite\_AU\Data\AGS\Freeway for example) and then click **OK** to close the dialog.



**MapMarker Data Not Found**

When launching AnySite Australia the first time, you may get several MapMarker Data Not Found messages regarding the location of the MapMarker address data. This means that AnySite Australia does not have the correct path to your geocoder data. Use the Browse button in the dialog to navigate to the proper directories, and then click **OK**.

**Default Locations for Data**

The following are default locations for data products:

- OEM Marker component of AnySite Australia:  
C:\Program Files\MapInfo\AnySite\_AU\Data\MapMarker\Data
- Full version of MapMarker Plus, requires a separate install and runs outside of AnySite Australia:  
C:\Program Files\MapInfo\MapMarker\MapMarker\_AU\Data. If prompted for the locations of file, then refer to the following:

MM 10.5	Default Path
jvm.dll	\Program Files\MapInfo\MapMarker Australia\JDK\bin\client\jvm.dll
mmjclient.jar	\Program Files\MapInfo\MapMarker Australia\
mmjserver.jar	\Program Files\MapInfo\MapMarker Australia\
mmj.jar	\Program Files\MapInfo\MapMarker Australia\
miutil.jar	\Program Files\MapInfo\MapMarker Australia\
micsys.jar	\Program Files\MapInfo\MapMarker Australia\
mmj_usa.jar	\Program Files\MapInfo\MapMarker Australia\
mmjclient_usa.jar	\Program Files\MapInfo\MapMarker Australia\
miscp.jar	\Program Files\MapInfo\MapMarker Australia\
mmjni.jar	\Program Files\MapInfo\MapMarker Australia\
mmjni_usa.jar	\Program Files\MapInfo\MapMarker Australia\
commons-logging.jar	\Program Files\MapInfo\MapMarker Australia\

## Default Locations for Data

---

<b>MM 10.5</b>	<b>Default Path</b>
mxjgeom.jar	\Program Files\MapInfo\MapMarker Australia\
mijts.jar	\Program Files\MapInfo\MapMarker Australia\
jdom.jar	\Program Files\MapInfo\MapMarker Australia\

# Upgrading Your Current Installation

Depending on your data provider, your demographic content may be updated one to four times a year. Updated templates for all Standard reports, Thematics, Hotspots, and Capture Methods are provided with each demographic update.

## In this chapter:

- ◆ **Backing-Up Custom Files** .....50
- ◆ **Are you upgrading from AnySite Australia 8.7.x?** .....50
- ◆ **Upgrading AnySite Australia.** .....51
- ◆ **Updating Reports and Thematics** .....52
- ◆ **Upgrading the AnySite Australia Client** .....55

# Backing-Up Custom Files

Before upgrading your current installation of AnySite Australia, it is recommended you move or copy the following file types to a new location, outside of the AnySite Australia application directory:

- anysite.mdb (located in the AnySite Australia application directory)
- custom layers (for example, Tables/Server/Linked)
- .SIT files (Saved Sites) (AnySite\Sites)
- .LST (Batch List)
- .ACT (Batch Actions) (AnySite\Actions)
- .XML (Index Files) (AnySite\Indexing)
- custom symbols (AnySite\MapX\CUSTSYMB)

Create an ART (AnySite Australia Repository Transfer \*.art) file of any custom reports, Thematics, Hotspots, capture methods, and any other custom files that you wish to retain, such as:

- custom map preferences
- custom reports
- custom report templates
- custom thematics
- custom Hotspots
- custom Capture Methods

To do this, run the Configurator and click **Tools > Export Preferences**. Select the custom reports, thematics, capture methods, and map preferences that you have created. Save the ART (AnySite Australia Repository Transfer \*.art) file to a safe location that is outside of the AnySite Australia application directory for future access.

## Are you upgrading from AnySite Australia 8.7.x?

If you are upgrading from AnySite Australia 8.7.x, then you must first delete the MapMarker folder where AnySite Australia is installed. This is necessary as a result of changes made to the structural organization of the MapMarker files.

In Windows Explorer, navigate to the MapMarker folder. In a standard install this will be C:\Program Files\MapInfo\AnySite\_AU\Data\MAPMARKER. Select the **MAPMARKER** folder and click **File > Delete**.

Continue with the instructions in the next section, [Upgrading AnySite Australia](#).

## Upgrading AnySite Australia

To upgrade from the previous release:

1. Place the AnySite Australia Installation DVD in the media drive.

If the installation does not automatically start, click **Run** from the Microsoft **Start** menu, and click the **Browse** button. Go to the media drive and select Launch.exe.

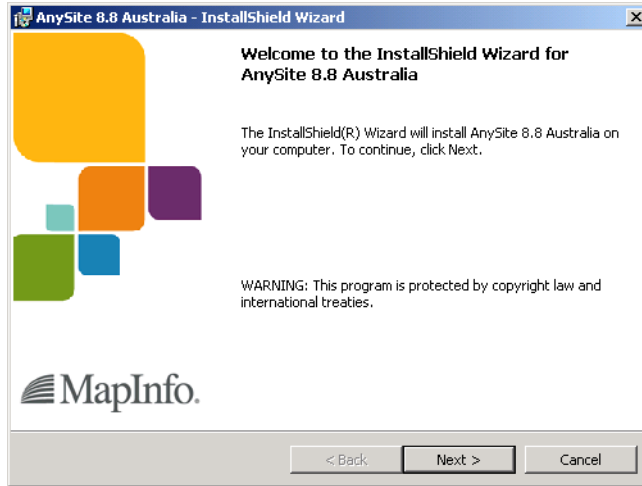
Select **Install**, then select **Install AnySite**.



2. The InstallShield Installer Update Completed screen displays.  
Click **Continue**.
3. A prompt to upgrade your AnySite application and data displays.  
Click **Yes**.

4. The Welcome screen displays.

Click **Next** to continue.



Follow the installation directions that match your current deployment (local or network). When prompted, check the installation path to make sure you are upgrading the desired AnySite Australia installation.

After completing the install and final system configuration, continue with the directions under [Updating Reports and Thematics on page 52](#) to update your custom reports and thematics.

## Updating Reports and Thematics

If you are upgrading demographic data, then the existing standard reports (Summary, Detail, Comparative, and Quick View), thematics (Shades, Hotspots and Dot Densities), and Capture Methods in your AnySite Australia now need to be updated. Changes made by your demographic data provider may prevent the existing data from functioning properly within AnySite Australia.

### Updating Standard Reports and Thematics

To change the vintage on standard reports:

1. Launch the AnySite Australia Configurator. Either click the AnySite Australia Configurator icon on your desktop or click **Programs > MapInfo > AnySite AU > AnySite Configurator** from the Microsoft Start menu.

Enter the default user name and password when prompted: type *Administrator* for the username and leave the password blank. Usernames are case sensitive, so make sure Administrator has a capital "A".

Click **OK** to proceed.

2. Click **Tools > Import Preferences**.

3. Navigate to the ART Files folder under the AnySite installation folder (C:\Program Files\MapInfo\AnySite\_AU\Art Files for example).
4. Select the most recent .ART file.
5. Highlight all items, and click **OK**.

The Configurator is updated with the new reports and thematics that correspond with the data.

6. Repeat from **step 3** for all the new/updated ART files.

**Note** A detailed electronic copy of exporting and importing preferences directions is provided on the AnySite Australia Installation disk under Upgrade\Documentation.

## Updating your Custom Reports and Thematics

It will only be necessary for you to manually update the "Verbose" descriptions on reports, thematics, Hotspots, and Capture Methods that you have customized. The underlying demographic content (numbers) are automatically updated by the AnySite Australia installer, the "Verbose" descriptions (2004 Total Population) will have to be manually altered from 2004-2005 via the Configurator.

All reports, thematics, Hotspots, and capture methods will continue to run successfully using the newest content from the installer. However, without importing the updated "Standard" reports and modifying the "verbose" descriptions on your custom reports, the printed maps and reports will continue to display the previous data vintage.

To change the vintage on custom reports:

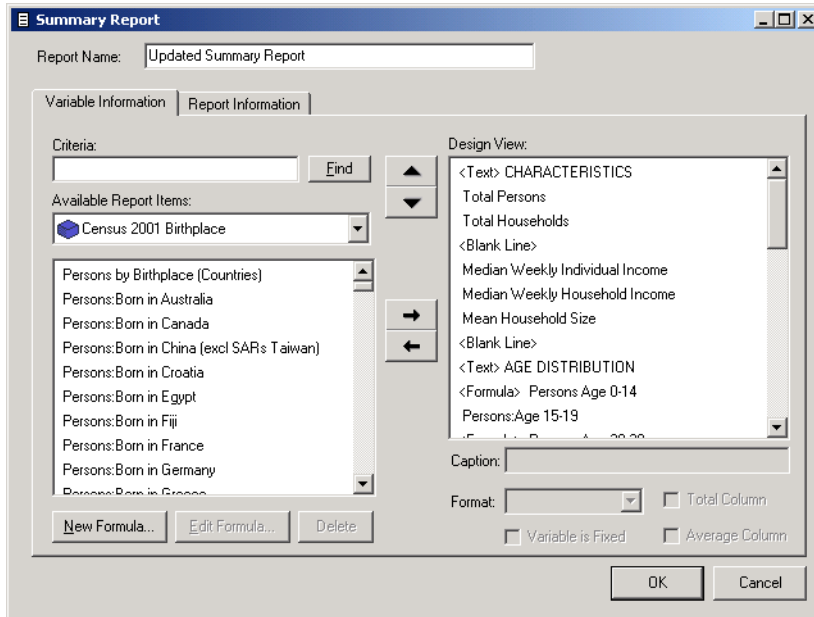
1. Launch the AnySite Australia Configurator. Either click the AnySite Australia Configurator icon on your desktop or click **Programs > MapInfo > AnySite AU > AnySite Configurator** from the Microsoft Start menu.

Enter the default user name and password when prompted: type *Administrator* for the username and leave the password blank. Usernames are case sensitive, so make sure Administrator has a capital "A".

Click **OK** to proceed.

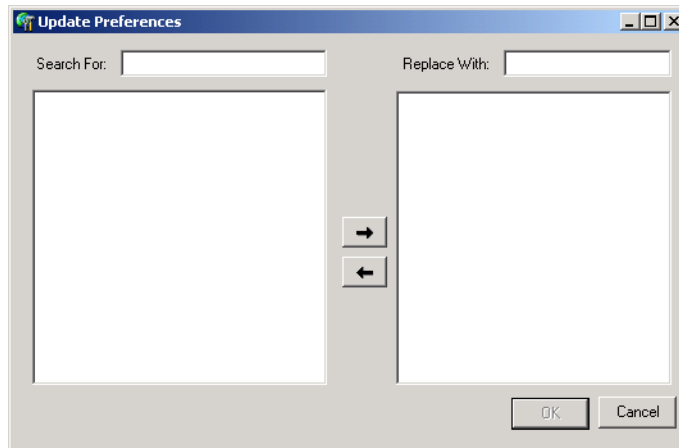
2. On the **Preferences** menu, click **Reports**.
3. Select your custom report, and click **Edit**.

4. Select a variable and modify the verbose descriptions. Click **OK** when you have finished.



Some of your existing thematics and reports may continue to run, but the verbose vintage descriptions, such as 2004, will be incorrect, or you may see NOT LICENSED on your reports. These variables will need to be manually replaced with the newly updated data. To do this:

1. In the Configurator from the **Tools** menu, click **Update Preferences**.
2. In the Update Preferences dialog, type the vintage description in to the **Search For** box.



3. Select the found items to update and move them to the Replace With list by clicking the right arrow button.
4. In the **Replace With** box, type the new vintage description and then click **OK**.

## Upgrading the AnySite Australia Client

To upgrade the AnySite Client software, run the ClientSetup.exe file located in the AnySite installation folder (C:\Program Files\MapInfo\AnySite\_AU for example).

Network clients need to be uninstalled from the client machine and reinstalled to guarantee a correct update to the system. Follow the directions under **Installing to a Network (Shared by Multiple Users) in Chapter 3 on page 22**.

AnySite Australia integrates data from several third party data vendors. There may be times when changes to the data will affect AnySite Australia functionality. In some cases, the best option will be to install a new version of the application, with the new data. We are continuously working with our vendors to establish consistent releases of the various data products to minimize these occurrences.



# Uninstalling

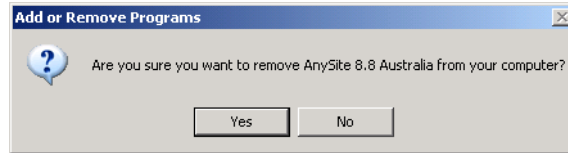
To uninstall your AnySite Australia software, follow the instructions provided here.

## In this chapter:

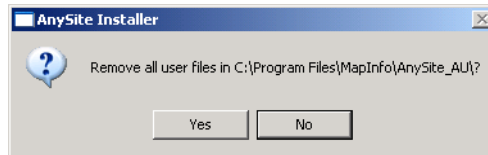
- ◆ [Uninstalling the AnySite Australia Application . . . . .58](#)
- ◆ [Uninstalling the AnySite Australia Client. . . . .58](#)

## Uninstalling the AnySite Australia Application

To uninstall the AnySite Australia application, click **Start > Settings > Control Panel > Add or Remove Programs** and select AnySite Australia. Click **Remove** for this application. A prompt displays asking if you would like to remove AnySite Australia from your computer. Click **Yes** to proceed with the uninstall.



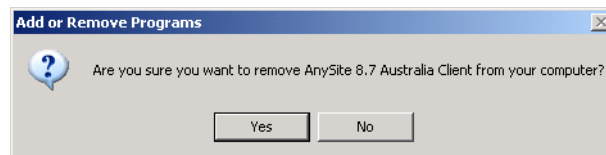
You are then prompted if you would like to remove all user files from the application directory. Selecting Yes removes the entire application directory and all contents of that directory. This includes any files you may have created in the AnySite Australia directory, such as saved sites, custom location or boundary layers. By selecting No, only the Sites, and Art Files directories are left untouched.



Once the installer completes, AnySite Australia is removed from your system.

## Uninstalling the AnySite Australia Client

To Uninstall the AnySite Australia Client, click **Start > Settings > Control Panel > Add or Remove Programs** and select AnySite Australia Client. Click **Remove** for this application. You are prompted if you would like to remove the AnySite Australia Client from your computer. Click **Yes** to proceed with the uninstall.



Once the installer completes, the AnySite Australia Client will be removed from your system.

# Performance Tuning a Network Installation

If you selected a Shared setup type, so that multiple users can access AnySite Australia, then consider tuning your installation to improve AnySite performance.

## In this chapter:

- ◆ **Network Speed** .....60
- ◆ **Virus Scanner Software Settings** .....60

# Network Speed

Using a 100 Megabit network connection is optimal. Using a slower network connection affects the refresh rate when panning or refreshing the map view.

## Virus Scanner Software Settings

AnySite performance slows when virus software scans AnySite data. The performance decrease is noticeable with a network installation when multiple people access AnySite.

AnySite opens many data layers for display in the map view. A data layer consists of five files that AnySite launches to display the layer. There may be 16 to 19 layers on display in the map view. AnySite queries all of the layer files when you pan or refresh a map.

To improve performance, set the virus software to exclude the AnySite data directory from the virus scan (the C:\Program Files\MapInfo\AnySite\_AU\Data directory for example), or to exclude the following file type extensions from the virus scan:

- .tab – A MapInfo table file that describes the format of the data.
- .dat – A file containing tabular data.
- .map – A file that describes the graphic objects.
- .id – A cross reference file that links the data with the graphic objects.
- .ind – An index file for searching for map objects.