



AnySite Australia v8.8.2 Release Notes

These Release Notes provides information on new features, behavioral changes in the software, fixes for customer-reported issues, and known issues that may require your attention.

This document should be used in conjunction with the AnySite Australia 8.8.2 Install Guide, available online at <http://www.pbinsight.com/support/product-documentation/details/anysite>

Contents

New Additions and Improvements	2
Installer	2
New Installer.....	2
Windows 7 Support.....	2
Data Updates	2
Demographic Estimates & Projections 2010.....	2
Consumer Spend Potential 2010.....	2
Updated Streets, Drivetime and Geocoding Data.....	2
Australian Statistical Geography Standard (2011).....	2
Cosmetic Improvements.....	3
New Map Preferences	3
New Range Shade Thematic Templates	3
Reporting	3
New Estimates & Projections Reports	3
Troubleshooting.....	4
Error Messages	4
MapMarker Data Not Found (Error 2306)	4
Custom Modifications	4
Drive times are different after upgrading.....	4
Print layouts are different after upgrading	4
Aerial images are unavailable.....	4
Help & Assistance.....	4

Level 7, 1 Elizabeth Plaza
North Sydney, NSW 2060

Main: +61.2.9437.6255

Fax: +61.2.9439.1773

pbbi.australia@pb.com

www.pbinsight.com.au

Technical Support Australia

1800 648 899 [toll free]

pbbi.support@pb.com

© 2011 Pitney Bowes Software Inc. All Rights Reserved. Pitney Bowes Business Insight and the Pitney Bowes Business Insight logo are registered trademarks of Pitney Bowes Software Inc.

June 1, 2011

New Additions and Improvements

Installer

New Installer

A new installer has been included, which provides streamlined installation process with fewer steps. (For installation instructions please see the AnySite 8.8.2 Install Guide).

Windows 7 Support

AnySite Australia is now fully supported for use on Microsoft Windows 7.

Data Updates

Demographic Estimates & Projections 2010

New Estimates & Projections 2010 have been included, offering forecasts for 2010, 2015 and 2020. Key demographic variables of general interest include:

Population

- 2010 Population
- 2015 Population
- 2020 Population
- Population Age Brackets (2010, 2015, 2020)

Income (2010)

- Weekly Household Income brackets
- Median Weekly Household Income
- Aggregate Annual Household Income
- Per Capita Annual Income

Consumer Spend Potential 2010

New consumer expenditure estimates have been included for 2010, offering an updated view of 107 spending categories nationwide.

Updated Streets, Drivetime and Geocoding Data

All basemap, road network, drive time and geocoding data have been updated to a 2010.10 vintage.

Australian Statistical Geography Standard (2011)

The boundaries for the ABS' new Australian Statistical Geography Standard (ASGS) to be used in the upcoming 2011 Census have been included in the **Data** directory of the AnySite installation.

(E.g.: C:\Program Files\MapInfo\AnySite_AU\Data)

This geography standard will eventually replace the current geography classification (ASGC), used for representation of 2006 Census data.

Please note that no new demographic data for these geographies will be available until the release of the 2011 Census data by the ABS. The boundaries may be useful, however, as a standard structure for boundary creation and for an understanding of how the new geographies will affect current processes.

Cosmetic Improvements

New Map Preferences

Several new Map Preferences have been included in this release:

- **2011.03 - Standard Map Preference** and **2011.03 - StreetPro Map Preference**

Provides a more contemporary basemap with a simplified Layer Control.

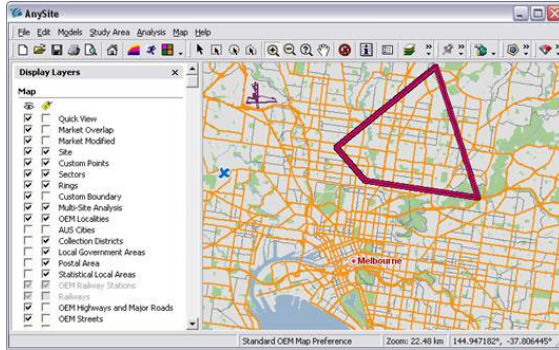


Figure 1 - Previous Default Map Preference

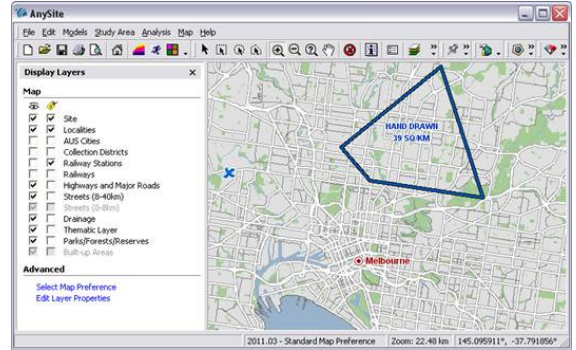


Figure 2 - New 2011.03 Default Map Preference

- **2011.03 - Land Use Map Preference**

Styles the landmass based on the land use defined by the ABS in their Mesh Block geography for both 2011 and 2006. Eleven common Land Use categories are available, as shown in Figure 3.

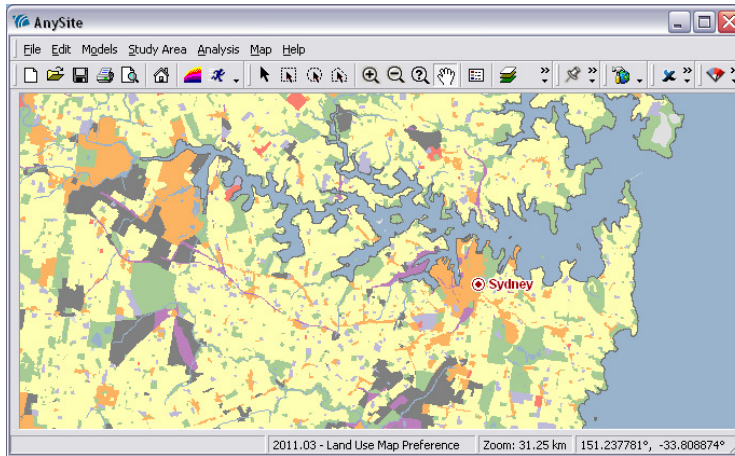


Figure 3 - 2011.03 Land Use Map Preference

New Range Shade Thematic Templates

Seven new Range Shade templates have been created, offering a greater selection of default colour styles to choose from for thematic maps.

Reporting

New Estimates & Projections Reports

Two new reports are available in the **MapInfo Australia Estimates & Projections.art** file, located in the **ART Files** directory in your AnySite installation.

To import, click **Tools -> Import Preferences** within the **Configurator** and select.

Troubleshooting

Error Messages

MapMarker Data Not Found (Error 2306)

Click OK to remove the error message. Application performs correctly.

Custom Modifications

Drive times are different after upgrading

If you have customized your matrix.tab file, then you will need to restore it from your backup after upgrading.

Print layouts are different after upgrading

If you modified system layout templates, such as \AnySite_AU\Template\Layout_A4_Portrait.WOR, then you will need to restore them from your backup after upgrading.

Aerial images are unavailable

Unless you have purchased access to online aerial images, the Download Aerial Image tool and Download Aerial Custom Image tool will appear to be unresponsive when you click on them. After purchasing access to an aerial images service or WMS service, you must set up access to it through the Configurator.

Help & Assistance

If you have any questions or concerns, please contact our Australian Technical Support department.

Technical Support Australia

- 1800 648 899 (toll free)
- pbbi.support@pb.com