



# MapInfo Professional 8.5.1 Release Notes

These Release Notes provide information on enhancements and updates we have made to MapInfo Professional 8.5.1. Please refer to the table of contents below for topics you may be interested in.

MapInfo Corporate Headquarters:  
Phone: 518 285 6000  
Fax: 518 285 6070  
Sales: 800 327 8627  
Government Sales: 800 619 2333  
Technical Support: 518 285 7283  
[www.mapinfo.com](http://www.mapinfo.com)

© 2006 MapInfo Corporation. All rights reserved. MapInfo and the MapInfo logo are trademarks of MapInfo Corporation and/or its affiliates.

December 2006

## List of Topics:

- ◆ **Upgrading MapInfo Professional** ..... 1
- ◆ **Printing Large and Complex Output Improved** ..... 2
- ◆ **SQL Server 2005 Support Added** ..... 3
- ◆ **Progress and Resolution of Outstanding Issues** ..... 6

## Upgrading MapInfo Professional

Your computer must be connected to the Internet to download the upgrade.

To upgrade MapInfo Professional to version 8.5.1:

1. From the Main menu, select **Help > Check For Update**. The Maintenance Releases for MapInfo Professional web page displays.
2. Create a temporary folder on your hard drive, such as c:\temp\mipro851.
3. On the web page, click the download link to display the **File Download** dialog box.
4. Choose the **Save** button and save the file to the temporary folder you created in step 2.
5. After the download is complete, double-click the executable file to start the installation process. Follow the instructions to complete the upgrade.

Remember that you must use the custom installation process to connect to remote databases using the ODBC or Oracle Spatial drivers. However, if you decide later that you want to use these drivers, you can return to the installation program and perform the custom installation again to install these components.

**Note:** You must agree to the **License Agreement** to install the maintenance release.

# Printing Large and Complex Output Improved

If you have seen the **Cannot Print** error message when printing, you may be trying to print one or more of the following:

- Large format (large page size) maps or layouts containing raster or grid layers that may be translucent or transparent  
In this case, many times the maps or layouts did not print at all, or if they did print, the translucent or transparent layers did not print properly.
- Maps made up of multiple pages that contain borders  
In this case multiple page maps with a border around the entire map would print with borders around each page instead.
- Maps that contained labels that span more than one page  
In this case, the labels would not print at all or would not print properly.

Largely, these issues were caused by the demand these print requests placed on the system resources in your computer.

To resolve these issues we now offer an option that breaks down a print request into smaller blocks, which reduces the demand on your system's resources. Each block is sent individually to the printer driver. This change may allow you to print large and complex images that you could not print in the past. We call this feature Subdivide Print. We limit the size of each block to 8192 x 8192 pixels.

## Caveat

During testing we discovered that many printer drivers handled this new option properly. However we found that the output of some printer drivers resulted in gaps that display at the block boundaries. Therefore we did not enable this option by default. Since these gaps may affect the quality of your final output, we are giving you the ability to enable this option if or when you need it. At this time, we do not have a workaround to remove these gaps.

**Note:** If you have both a postscript and a non-postscript version of your printer driver, we recommend you try both to see which version gives you better results.

## Enabling the New Option

To use this new option, you need to add a registry key to your local machine. We have created an online Knowledge Base document that contains the registration (.reg) files inside a ZIP file that you can use to enable or disable this option automatically. You will need to save the ZIP file locally, open the ZIP file and double-click the appropriate registry file to add this option to the registry. Adding registry keys to your computer requires Administrator rights, or at least write access to your computer's registry. If you do not have this type of access, we recommend you see your System Administrator for instructions.

### Enabling the Subdivide Print Option Using Registration Files

To enable the Subdivide Print option using registration files in the Knowledge Base document:

1. Go to the MapInfo Knowledge Base entry. Click [here](#) to do this now or copy the following address to your browser:

[http://testdrive.mapinfo.com/techsupp/miprod.nsf/kbase\\_by\\_product/2F7C21FEAFF3145285257243005336AB](http://testdrive.mapinfo.com/techsupp/miprod.nsf/kbase_by_product/2F7C21FEAFF3145285257243005336AB)

**Note:** If you do not have Internet access, see [Enabling the Subdivide Print Option Manually](#) for instructions.

2. Open or save the **SubdividePrint.ZIP** file and, using your ZIP utility, save the two registration files locally. Use Windows Explorer to navigate to the registration files.

**Note:** We recommend you create a permanent directory in case you need to remove the registration option later.

3. Double-click the **SubdividePrint.reg** icon to add the new key to the registry.

This option takes effect the next time you open MapInfo Professional.

### Disabling the Subdivide Print Option Using Registration Files

If you try this option and you want to remove this functionality, you can disable the registry entry by following these instructions.

**Note:** We assume that you have downloaded the ZIP file that contains the registry files by following the instructions in [Enabling the Subdivide Print Option Using Registration Files](#).

To disable the Subdivide Print option using the downloaded registration file:

1. Go to the directory that contains the registration (.reg) files you downloaded earlier.
2. To remove the Subdivide Print option, double-click the **UndoSubdividePrint.reg** icon. The registry entry is updated with the new value.

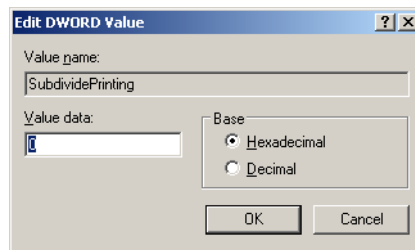
This option takes effect the next time you open MapInfo Professional.

### Enabling the Subdivide Print Option Manually

If you do not have access to the Internet, or you want to add this option manually, follow these instructions.

To enable the Subdivide Print option by entering the registration key manually:

1. From the **Start** menu, click **Run** and type the command `regedit`. Click **OK** to display the **Registry Editor** window.
2. In the HKEY\_LOCAL\_MACHINE entry, navigate to **Software > MapInfo > MapInfo > Common**.
3. From the **Edit** menu, select **New > DWORD Value**. A new entry displays in the list.
4. Right-click the entry and select **Rename**. Rename the new entry `SubdividePrint` and press **Enter**.
5. Double-click the new entry to display the **Edit DWORD Value** dialog box.



6. To enable the Subdivide Print option, type 1 in the **Value data** field and click **OK**.

To disable this option, return to this dialog box, type 0 in the **Value data** field and click **OK**.

This option takes effect the next time you open MapInfo Professional.

**Note:** You can also remove this regedit entry entirely to remove this option.

## SQL Server 2005 Support Added

We have updated MapInfo Professional to support changes in the MS SQL Server 2005 schema concept. Microsoft has enhanced SQL Server 2005 to use schemas to organize database objects into namespaces. In the past the schema was part of the owner/user construct, so when you deleted a user, you deleted the objects associated with that user.

Using SQL Server 2005, objects are associated with a schema, which can be associated with many users and each user can be associated with many schemas.

The old fully qualified name of a database object was:

*Server.Database.User.Object.*

The new fully qualified name of the object is:

*Server.Database.Schema.Object*

If you leave out the server and database name identifiers, MapInfo Professional uses the current server and database names. If you do not explicitly specify a schema for a user, the server assumes any unqualified object names are in the default schema. Therefore, if you are accessing a SQL Server 2005 database, you need to update any features/ functions, tools, and test scripts accessing the objects, including the metadata in the MAPCATALOG, to use the new fully or partially qualified object name.

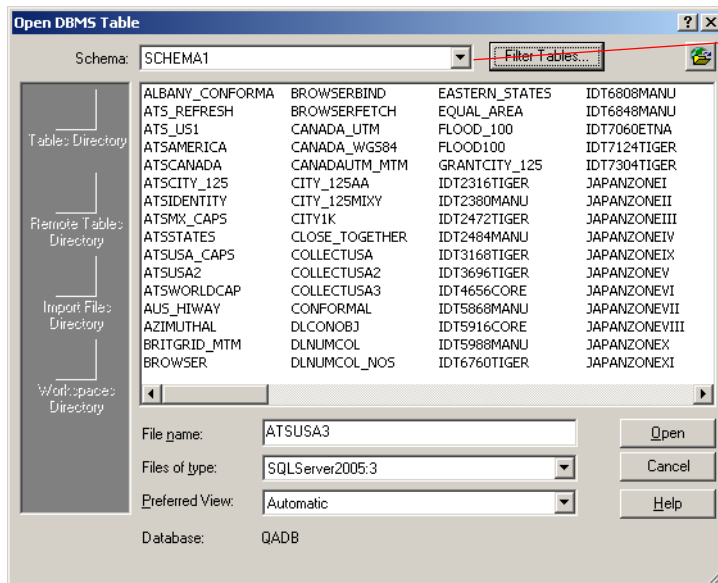
To make this version of SQL Server work, you must have this 8.5.1 version of MapInfo Professional. There is a work around for MapInfo Professional 8.5 and earlier versions that accesses a server table with the form, *Database.Owner.Object*. Review the MapInfo Professional 8.5 User Guide documentation for these instructions.

## SpatialWare 4.9 Support Added

MapInfo Professional now supports SpatialWare 4.9 which has been upgraded to support SQL Server 2005.

## Accessing Tables Under Different Schemas

When you access a SQL Server 2005 database and you display the Open DBMS Table dialog box, you notice that the **Owner** label has changed to **Schema**, to reflect the new naming convention.



Review available schemas and the tables under them by selecting them from the drop-down list.

The default entry is the default schema of the currently logged in user. The drop-down list still displays all of the other available schemas. After you access the database, every operation should work as it did before. There is the same editing limitations as before.

**Note:** You cannot edit a table that you do not have rights or permissions to edit and the schema does not display in the list if there is no table associated with it.

## Saving and Creating New Tables

We have made two changes to the Create New Table and Save Table As operations that you may notice in this release.

Neither the Create New Table nor the Save Table As operations allow you to choose an owner, but you can always create/save table under the default login/owner. As a result, we have changed the word *Owner* to the word *Schema* in the Save Copy As and Create New Table dialog boxes and the default login schema is selected by default when you select a SQL Server 2005 database.

The second change is that you can choose among the available schemas for SQL Server 2005 in the Create New Table or Save Table As dialog boxes. Remember, to select a schema doesn't mean that you have the permission to create a table under that schema on the server. You need to know which schemas you can create and save tables under and which you cannot. If you are not sure whether you have these permissions, check with your database administrator. An operation will fail if you do not have the required permission(s) on the chosen/given schema.

## Uploading a Table into a Specific Schema

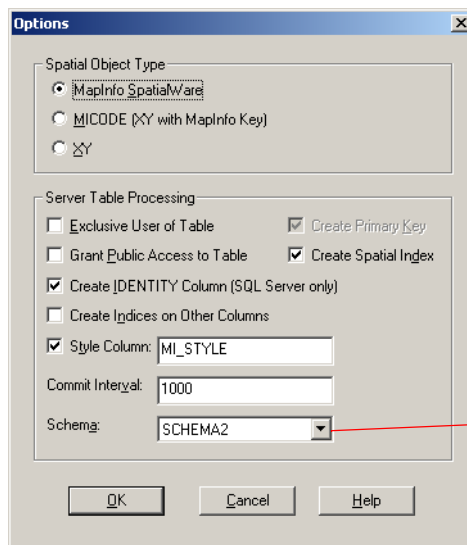
If you do not specify the schema name when you upload a table, EasyLoader will upload the table using the user's default schema when uploading to a SQL Server 2005 server. This includes the registration into MapCatalog. The schema name is inserted into column OWNERNAME of MapCatalog.

**Note:** Ask your Database Administrator for information if you don't know your default schema to ensure that you know where the tables you are uploading are being stored.

You must have the proper permissions on the default schema to upload the table successfully. If you know which schema you want to upload the table to, you can specify the schema using the user interface in EasyLoader or using the command line options. See the EasyLoader documentation for the command line instructions.

To upload a table to a specific schema:

1. From the **Tools** Menu, select the **EasyLoader** option and the **EasyLoader** submenu. The **MapInfo EasyLoader** dialog box displays.
2. Select the appropriate database connection and source table you want to upload.
3. Select the appropriate server table names and processing instructions.
4. Click the **Options** button to display the additional fields in the **Options** dialog box.



Select a schema to that you have rights to or the upload will fail.

Use the Schema drop-down list to select a schema to which you want to upload your data. The default schema displays in the drop-down list.

5. Select the other upload options as appropriate and click **OK**. The **EasyLoader** dialog box redisplay.

6. Enter the TAB file directory for the server tables in the field provided and click **Upload** to begin the upload process.

SQL Server 2005 allows one user to associate with many schemas, so MapInfo Professional provides the ability to choose among the available schemas to which to upload your data. It is up to you to know which schemas you have rights to create tables under. If you do not have the appropriate permissions to a selected schema, the upload process will fail. Ask your database administrator for more specific and detailed information about your uploading rights.

## Progress and Resolution of Outstanding Issues

The following outstanding issues have been corrected in this maintenance release:

### Oracle OCI Connection Workaround

In general you cannot connect to an Oracle database when there are parentheses in the application's path. This has been a long standing limitation in working with Oracle databases.

You may notice this connection difficulty if you are running MapInfo Professional on a 64-bit Windows operating system. The MapInfo Professional OCI driver is not able to connect to your remote data because Microsoft adds (x86) to the end of the Program Files directory to run 32-bit applications. This addition of the parentheses prevents the application from accessing Oracle data.

To resolve this issue, we recommend you install MapInfo Professional in a discrete directory, such as c:\MapInfo. Trying to install MapInfo Professional explicitly into the Program Files directory does not appear to work, because Windows seems to redirect the application into the \Program Files(x86) directory anyway. Oracle appears to be aware of this issue, and we will continue to monitor any changes that affect this issue.

### Administrative\Preference Issues

The following administrative and preference issues have been resolved:

Issue #	Description/Resolution
S10003	<p>There is an undocumented change in behavior using &lt;Ctrl A&gt; shortcut between v8.0 and v8.5. Previously when you selected an object and then used the &lt;Ctrl A&gt; shortcut in the Map and Browser windows, you would scroll to the associated browser record.</p> <p><b>Resolution:</b> In v8.5 the application scrolls to the associated browser entry AND zooms to the object in the Map window. We have removed this functionality.</p>
T17821	<p>In the Options &gt; Preferences &gt; System Settings dialog box, after setting the Default Paper and Layout Units, the system uses incorrect paper units, other units are correct.</p> <p><b>Resolution:</b> This occurred because the application would set the paper units and the session settings in the wrong order. To correct this issue we set the paper units after other preferences are changed. This means the default paper units you set, remain in place.</p>
T20275	<p>When the Application expects to display a MapInfow.wor file at startup, but cannot find that file, an error message displays that is not very informative.</p> <p><b>Resolution:</b> We have corrected this to provide a more meaningful error message.</p>

## Coordinate System Issues

The following coordinate system issues have been resolved:

Issue #	Description/Resolution
T20081	<p>The Custom PRJ entry is using affine transformation results incorrectly when saving cosmetic objects.</p> <p><b>Resolution:</b> We have changed the way we convert custom coordinate system datums. In the past, we wrote custom datums out in 8 parameters even if the last five parameters were 0. Now we attempt to write it as a three parameter datum when the last 5 parameters are zeros. This makes coordinate system string shorter and does not fail our internal string limit.</p> <p><b>Note:</b> This issue could still occur for coordinate systems with 8-parameter datums, affine transform and bounds.</p>
T20286	<p>Raster in French Lambert RGF93 not reprojecting correctly if using Always method and the image is pixelated if using Cubic Convolution.</p> <p><b>Resolution:</b> There was an error in the calculation of the nearest neighbor algorithm for the Always method that caused this issue. The algorithm did not begin the calculation with the nearest neighbor pixel, but rather a pixel two pixels away. This has been corrected so images should display correctly.</p>

## Geocoding Issues

The following Geocoding issues have been resolved:

Issue #	Description/Resolution
T19603	<p>When some users ran Select and Georesult statements after geocoding, the results would be different.</p> <p><b>Resolution:</b> The application was reporting a result as a close match when there was no match at all. So when you queried the number of matches and non-matches, the results were different from those reported by the Geocode command.</p> <p>We have corrected the code to perform a second check on the actual address returned and correctly process it as not a close match.</p> <p>This issue only occurred when you were using a MapMarker server and only when geocoding using CASS evaluation mode. The issue is related to further CASS certification that is performed by the MapMarker U.S. product but not by MapInfo Professional. CASS is an evaluation process for address matching software established by the U.S. Postal Service and the mailing industry. MapMarker U.S. conforms to this standard for U.S.-only geocoding.</p> <p><b>Note:</b> This issue did not occur when you used the Envinsa server to geocode your data.</p>
T19687	<p>Entering an incorrect local geocoder field creates points but does not update any columns.</p> <p><b>Resolution:</b> When you enter an incorrect local geocoder field, the application now displays an error message warning you that it cannot complete the geocoding process. To resolve this issue, check the field information and correct it in the geocoding request.</p>
T19729	<p>Inconsistent/Incorrect results display when using Interactive Geocoding on an Envinsa server.</p> <p><b>Resolution:</b> For Envinsa servers, in Automatic geocoding mode, we no longer allow the entry in the Max Candidates field to be less than 2. This ensures that the results are consistent between Automatic geocoding and Interactive Geocoding.</p>

Issue #	Description/Resolution
T20105	<p>The application closes suddenly if you try to geocode to an invalid Envinsa server.</p> <p><b>Resolution:</b> When you try to geocode a table using an invalid Envinsa server, an error message displays informing you cannot connect to the server. Please check the URL of the server you are attempting to connect to and try again.</p>

## Google Earth Link Tool Issues

The following Google Earth Link Tool issues have been resolved:

Issue #	Description/Resolution
B10069	<p>Specifying output paths with spaces cause errors.</p> <p><b>Resolution:</b> This appears to be a Google Earth limitation in the beta software. We are monitoring new releases of Google Earth to see if Google corrects this issue. In the interim, we recommend that you create output paths with no spaces in them to avoid this error.</p>
T18449	<p>Double-Byte character sets need to be handled differently than Single-Byte character sets.</p> <p><b>Resolution:</b> We have updated our utility to accommodate Japanese, Simplified Chinese, Traditional Chinese, and Korean character sets.</p>
T19941	<p>The Height field set to a column does not work on multipolygons that contain holes or islands.</p> <p><b>Resolution:</b> To resolve this issue we make sure that you have made a selection when trying to get a height from a column.</p>
T19955	<p>The Height field does not persist when exporting map data to Google Earth.</p> <p><b>Resolution:</b> We have modified the utility to ensure that the Height field does persist when you export a map.</p>
T19976	<p>Polygons with holes don't get filled correctly if they have an altitude.</p> <p><b>Resolution:</b> This issue was related to the order in which the points of the polygon were written. To correct this problem, we ensure that the points are written in counter-clockwise order in the KML file.</p>
T19989	<p>Extruded objects are not filled in completely.</p> <p><b>Resolution:</b> This issue is related to issue T19976 above because extruding is also dependent upon the order in which the points are saved in the KML file. Google Earth expects the points in a polygon to be listed in a counter-clockwise direction; MapInfo Professional doesn't care whether the points are saved clockwise or counter-clockwise. We have modified the utility to ensure that the points are written in the correct order in the KML.</p>
T19995, T20106	<p>Objects in Seamless layer do not have the choice of KML or Raster.</p> <p><b>Resolution:</b> This issue occurred when the selected objects of a Seamless layer were not in the frontmost window. This prevented you from choosing between the KML and raster formats. We have updated the code to allow selections that are in any window. To see this chance, open two Map windows and make a selection in one. Select the other to ensure that it is topmost. Click Map &gt; Google Earth Link &gt; Export to Google Earth and the application offers to export the selected object, even though it is not in the topmost window.</p>
T20067	<p>Bad value for &lt;extrude&gt; tag.</p> <p><b>Resolution:</b> This change will be visible only to someone who inspects the exported KML file. We corrected the utility to write 1 instead of the height value in the &lt;extrude&gt; element. This resolves the issue.</p>

Issue #	Description/Resolution
T20088	<p>The application closes suddenly when you try to send maps to Google Earth if the path to Google Earth is invalid in the registry. The Google Earth path might get corrupted if you reinstall it.</p> <p><b>Resolution:</b> We have updated the utility to use the Windows File Association facility instead of the registry to store the path. This prevents the sudden closure of the application.</p>
T20433	<p>If you attempt to export to Google Earth when there is no open map, an error results.</p> <p><b>Resolution:</b> We have corrected this problem handling the condition when no Map window is open and we have made the error message more meaningful.</p>
T20737	<p>When you try to change the file name of the copyrighted text file in the application, the new file name is not recognized.</p> <p><b>Resolution:</b> We have corrected this issue so that the new file name is saved properly.</p>
T21034	<p>You can access the Export Map Image to Google Earth dialog box and the <b>Send to Google Earth now</b> check box is enabled even when Google Earth is not installed.</p> <p><b>Resolution:</b> We have resolved this issue by checking to see if Google Earth is installed before allowing access to this functionality. This issue is related to T20088.</p>

## Layout Issues

The following Layout issues have been resolved:

Issue #	Description/Resolution
B10072	<p>In the Layout Window, a frame that contained a Ranged Theme Legend displayed white spaces if there were gaps in the range values.</p> <p><b>Resolution:</b> Thematic legends now correctly size and display their contents whether they are embedded in the Map, Layout or Legend windows. See T20565.</p>
B10073	<p>In the Layout Window, the legend title was truncated when the Theme Legend of Map window was used in a frame for the legend.</p> <p><b>Resolution:</b> Thematic legends now correctly size and display their contents whether they are embedded in the Map, Layout, or Legend windows. See T20565.</p>
T18576	<p>A Layout created by one frame for a window did not represent the size of pie chart thematic accurately.</p> <p><b>Resolution:</b> The scale for pie and bar legends now depends upon the scale of the map when the map is embedded in a Layout window. This resolved the issue.</p>
T20618	<p>The contents of the Message window do not appear in Layout windows.</p> <p><b>Resolution:</b> We changed a data type that prevented the contents of the Message window from displaying, which corrects this error. Now, if you copy a Message window to a Layout, the contents of the Message window display properly.</p>

## Map/Thematic Map Issues

The following map and thematic issues have been resolved:

Issue #	Description/Resolution
21729	<p>Modifying a new Grid thematic layer from Layer Control resulted in inappropriate errors.</p> <p><b>Resolution:</b> The Grid thematic layer is now set when the Layer Control dialog box is closed to prevent these errors and to create the thematic layer properly. This corrects the issue.</p>
B10048	<p>The error message, <code>All or part of Object(s) invalid</code> displays when you buffered small polyline objects.</p> <p><b>Resolution:</b> We have corrected the out of memory issue that caused this error.</p>
B10070	<p>Border styles for regions were not saved when you created a thematic map using the Individual Value Qualitative Light &amp; Dark or Qualitative Pastel thematic templates.</p> <p><b>Resolution:</b> This issue occurred when you changed the border but not the fill style of a thematic map. We have corrected this to save the border styles for regions when you save the thematic template.</p>
T12330	<p>The IDW Interpolator accepts non-numeric characters as input and treats them as zeros.</p> <p><b>Resolution:</b> We added stricter validation for the Search Radius and Grid Border fields to ensure that you cannot enter non-numeric characters. For example, entries such as <code>abc</code>, and <code>g0</code> will cause an error, but <code>3g</code> will be interpreted as 3. We made similar changes to TIN Interpolator Settings dialog box.</p>
T15989	<p>A Workspace file with thematic modifiers using zoom constraints and converted to MWS may not display the same when viewed in MapXtreme 2005.</p> <p><b>Resolution:</b> MapInfo Professional and MapXtreme 2005 use slightly different visibility rules for modifiers because of their different object models. In MapInfo Professional a thematic modifier is a separate layer and may be visible even when its data layer is not. In MapXtreme, if a data layer is not visible, then none of its thematic modifiers are visible.</p> <p>Therefore, to get the closest visual and behavioral match between the two products, we have made the MWS visibility rules for the data layer to be at least at the same level as the visibility rules of the union of all its modifiers.</p> <p>For example, if a data layer is not visible in MapInfo Professional, but has two modifiers, one with a zoom range of [20 mi, 30 mi], and another with a zoom range of [30 mi, 40 mi], then the data layer is written to the MWS with a zoom range of [20 mi, 40 mi], using the lower and upper values of each range.</p> <p>If one of the modifiers has a zoom range of [2 mi, 10 mi] and the other modifier has a zoom range of [20 mi, 100 mi], the resulting zoom range for the data layer in the MWS is [2 mi, 100 mi]. This means that when viewing at a zoom level between 10 mi and 20 mi, the data layer will be visible in MapXtreme, but not in MapInfo Professional.</p>
T17352	<p>Some points were ignored when creating a Voronoi polygon.</p> <p><b>Resolution:</b> Previously, floats and rounding errors were causing Voronoi points to combine into one. This has been corrected.</p>
T18074	<p>The Object &gt; Split function is producing a invalid objects error.</p> <p><b>Resolution:</b> To correct this error, we changed the way objects are processed so the invalid objects are not created.</p>
T18182	<p>Images no longer line up after reprojection.</p> <p><b>Resolution:</b> We have changed the algorithm that caused this error to prevent this issue from occurring.</p>

Issue #	Description/Resolution
T18464	<p>Custom symbols do not reload properly when using Reload Custom Symbols statement.</p> <p><b>Resolution:</b> We added a method that properly qualifies the full path to the custom symbol, which resolved the issue.</p>
T19138	<p>The Legend frame size was incorrect for a theme with the swatch size set to font size.</p> <p><b>Resolution:</b> Thematic legends now correctly size and display their contents whether they are embedded in the Map, Layout or Legend windows. See T20565.</p>
T19570	<p>Problem opening workspaces that use an expression with wild cards in an Individual Thematic Map.</p> <p><b>Resolution:</b> We have corrected this issue by improving the writing of a shade statement. You can use wild cards (*) in expressions when opening workspaces.</p>
T19901	<p>Extra lines are visible when drawing a region with many holes.</p> <p><b>Resolution:</b> We converted the memory size of points to accommodate larger points. When we did that, it became possible to add more points than were usually allowed. This caused the extra lines when drawing regions with holes in them. We have changed this code to prevent these extra lines from drawing. We could make this change because we no longer are limited by the Windows 98 operating system.</p>
T19920	<p>Label Zoom Layering values are not converting correctly when changing Map Distance Units from kilometers to miles.</p> <p><b>Resolution:</b> There was an issue with the conversion formula that has been corrected.</p>
T19996	<p>The <b>Automatically Open Default Theme</b> Map Window Preference and <b>Display Vertical Mapper Grid as</b> System Preference were being ignored when you dragged and dropped or double-clicked a table from outside the application, or added a table as a layer using Layer Control.</p> <p><b>Resolution:</b> Here are the changes we made to correct these issues. Once you select the <b>Automatically Open Default Theme</b> preference:</p> <ul style="list-style-type: none"> <li>• When you add a table with a default theme in the metadata as a layer using Layer Control, MapInfo Professional adds the table's default theme to the Map</li> <li>• When you add a table with a default theme in the metadata by double-clicking the Map from outside the application, MapInfo Professional adds the table's default theme to the Map</li> </ul> <p>When you select the <b>Display Vertical Mapper Grid as</b> preference:</p> <ul style="list-style-type: none"> <li>• MapInfo Professional honors the preference when you drag and drop a table you created with Vertical Mapper.</li> </ul>
T20121	<p>Problems editing the Pen Style (border) for Qualitative Thematic Templates.</p> <p><b>Resolution:</b> This issue arose when you created or modified themes based on the new Qualitative Theme Templates (introduced in v8.0). Due to this change the pen style of the borders are no longer ignored. We have corrected the problems this caused to save the border styles for regions when you save the thematic template.</p>
T20233	<p>Cutting and pasting objects causes changes in zoom during paste operation.</p> <p><b>Resolution:</b> We have changed this behavior to prevent the zoom during the paste operation.</p>
T20280	<p>If you created a Hotlink in a workspace, it would not save to the workspace if the layer was not visible.</p> <p><b>Resolution:</b> We have updated the code to allow you to save a Hotlink regardless of the visibility of a layer.</p>
T20450	<p>There is a selection display issue in Query windows when you select an object in the Map window.</p> <p><b>Resolution:</b> In the past when you made a selection in a Map window, the application needed to highlight the selection not just in the Selection window, but also in any other open windows in which the object occurred, including Query windows. This has been corrected.</p>

Issue #	Description/Resolution
T20565, B10072, B10073 and T13085	<p>When double-clicking some areas of a thematic legend, the wrong legend displays for editing.</p> <p><b>Resolution:</b> The code that determines the size of a thematic legend is separate from the code that draws the legend itself. In time, these different sections of code got out of sync, which caused the problems in this list of bugs. These issues have been resolved as part of this maintenance effort. The legend you double-click to edit is now the legend that displays for editing.</p>
T21074	<p>When you created a thematic grid file from a Float field in an expression, the application wrote a decimal width of 0 to the .TAB file's metadata. This caused the decimal values to be discarded. When you reopened the table you could see this in the InfoTips or using the InfoTool.</p> <p><b>Resolution:</b> We have updated the application to write the appropriate decimal width for float values into the table's metadata when you create a thematic grid.</p>
T21132	<p>The Line object was showing twice in the Legend window after all of the line styles were converted to the same pattern.</p> <p><b>Resolution:</b> The pen patterns used to draw both lines had the same visual appearance, however, one was to be drawn as interleaved and referenced a different pattern value. To correct this issue, we added a new method that compares line styles and border line styles in cartographic legends for visual equality.</p>

## Miscellaneous Issues

The following miscellaneous issues have been resolved:

Issue #	Description/Resolution
T19528	<p>When you click the Add button to add a Request Value in the Create Driving Regions dialog box, the new entry is usually the same style as the previous entry, but not always.</p> <p><b>Resolution:</b> We have corrected this issue so that the style of a Request Value is the blue cross hatch pattern every time, no matter how many time you add a new value.</p>
T20872	<p>When loading query templates into the Select or SQL Select dialog box, spaces between a column name and the keyword "Desc" or "Asc" in an "Order By" clause were being removed. As a result, the Application misinterpreted the query. The problem also arose when you opened queries saved using the File &gt; Save Query menu option.</p> <p><b>Resolution:</b> We have corrected this so that queries are now being interpreted properly.</p>
T21135	<p>The application displayed the error, " Total record length must be no longer than 4000 bytes" when you added a column to a table with only 3782 bytes in length.</p> <p><b>Resolution:</b> There was an issue with the way the data types in the table were calculated. This calculation method has been corrected but there is still a 4000 byte total record limit.</p>

## MWS File Issues

The following MWS file issues have been resolved:

Issue #	Description/Resolution
T12184	<p>Labels of invisible layers display in MWS files.</p> <p><b>Resolution:</b> We have implemented new rules for writing label layer and label source visibility/zoom range when creating MWS files.</p> <ol style="list-style-type: none"> <li>1. If the data layer has a visibility zoom range but no label zoom range, the MWS label source zoom range should be the data layer zoom range;</li> <li>2. If the data layer has a label zoom range but no visibility zoom range, the MWS label source zoom range should be the label zoom range;</li> <li>3. If the data layer has both a visibility and a label zoom range, the MWS label source zoom range should be the intersection of the two zoom ranges.</li> </ol> <p>The data layer's zoom range in the MWS file may be altered based on its thematic modifier zoom ranges in MapInfo Professional, but in this case when we need to inherit the data layer's zoom constraints, we use the original constraints so that labels appear in MapXtreme 2005 as they do in MapInfo Professional. See the resolution for T15989 for more information.</p>
T16681	<p>Can't open MapInfo Professional MWS files in Workspace Manager.</p> <p><b>Resolution:</b> This problem was related to Row IDs and has been resolved by not translating Row ID queries into MWS files. You can open MWS files in Workspace Manager now.</p>
T17079	<p>The "None" symbol in the MapInfo 3.0 Compatible Vector Symbols does not translate correctly to MWS files.</p> <p><b>Resolution:</b> When you create an override for a point layer and select an invisible point style, the application uses the vector version of MapInfo 3.0 Compatible symbol styles.</p> <p><b>Note:</b> If you select the preference for displaying pre-version 4 symbols using a TrueType font, this does not occur.</p> <p>However, the internal code for a MapInfo 3.0 Compatible invisible symbol, or "None" cannot be written to an MWS file because it is not a printable character. We recommend you use the "None" symbol from a TrueType font instead to resolve this issue. We have implemented this workaround in the application so you do not have to.</p>
T19357	<p>Cannot save a layer's selectability state in an .MWS file.</p> <p><b>Resolution:</b> We added layer selection and edit states to MWS persistence to enable this functionality. The editable layer is also persisted as an insertable layer in the .MWS file.</p>
T19719	<p>The application closes suddenly when you try to save a workspace containing a Quantile Range thematic map as a.MWS.</p> <p><b>Resolution:</b> MapInfo Professional was using the wrong method to test for a valid quantile expression. This has been corrected.</p>
T20211	<p>MWS ImageWidth and ImageHeight output is incorrect.</p> <p><b>Resolution:</b> For this issue, we corrected the way the map's pixel size was calculated. MWS image sizes are correct now.</p>
T20853	<p>A workspace with a Quantile Thematic layer saved to a MWS format, forces the application to close suddenly.</p> <p><b>Resolution:</b> MapInfo Professional was using the wrong method to test for a valid Quantile expression. This has been corrected.</p>

## Printing Issues

The following printing issues have been resolved for Maps and Layout files:

Issue #	Description/Resolution
28268	Printing transparent/translucent layer combinations often resulted in losing some or all of the data during printing. <b>Resolution:</b> We have corrected this issue by changing the way MapInfo Professional prints maps. The application now breaks map images into small blocks which can handle the transparent and translucent layer combinations better.
T20256	The application throws a page margin error when you resize a map that requires large scale printing. <b>Resolution:</b> We updated the program to handle larger page dimensions. This correction works for both Map and Layout files.

## Raster Issues

The following raster issues have been resolved:

Issue #	Description/Resolution
T17039	The Save Window As command creates a raster image one pixel too wide and one pixel too tall for Map and Layout windows. <b>Resolution:</b> We have corrected the calculations required to save a raster image window to prevent this issue from occurring.
T19653	After raster reprojection, a ghost image displays behind the reprojected image. <b>Resolution:</b> We have corrected this issue by selecting the appropriate transparent color during the raster reprojection process.
T21347	Panning raster images is noticeably slower in MapInfo Professional 8.5 than earlier versions. <b>Resolution:</b> We have corrected this issue to improve the performance of panning in raster images.

## RDBMS Issues

The following remote database issues have been resolved:

Issue #	Description/Resolution
T20364	Tables uploaded to Oracle with newer projections are inserting a null into SRID metadata table when Oracle supports that projection. <b>Resolution:</b> This issue was resolved for the following projections only: Danish System 34 Jylland-Fyn, Danish System 45 Bornholm, and Danish System 34 Sjaelland. A larger project may be undertaken to correct this issue for other projections.
T20421	You could not open a LIVE access Oracle table if you were not the owner. <b>Resolution:</b> We have changed the application to allow you to open any Oracle table that you have rights to, regardless of the ownership of the table.

Issue #	Description/Resolution
T21057	<p>The Preferred View drop-down entry did not persist after you changed the DBMS symbology and made the table mappable.</p> <p><b>Resolution:</b> We have expanded the original work done to persist the previously set Preferred View to include the Change DBMS Style and the Make Table Mappable conditions.</p>
T21068	<p>When you clicked the Back button in the Open DBMS Table Options dialog box, the default owner would display in the Owner field rather than the owner you selected.</p> <p><b>Resolution:</b> We have corrected this issue to ensure that the owner you select going into the Open DBMS Table Options dialog box is the same when you return.</p>

## Tool Issues

The following tool issues have been resolved:

Issue #	Description/Resolution
T20460	<p>The Labeler and Workspace Resolver tools start up with blank Message windows.</p> <p><b>Resolution:</b> These issues were caused by changes that allow users to copy the contents of the Message window. We have updated the code to prevent this from occurring.</p>
T21080	<p>Universal Translator: A MSVC runtime error occurs you translate files from .DWG to .TAB formats.</p> <p><b>Resolution:</b> Safe Software, who provides the Universal Translator to the application has corrected this issue in their software. To see this change, open a .DWG file and convert it to a .TAB file.</p>
T20580	<p>When using the Universal Translator (a third-party product of Safe Software) to translate a file to .TAB or .MIF format, the result no longer displays as expected.</p> <p><b>Resolution:</b> In the past when using the Universal Translator (UT) to translate a file to .TAB or .MIF format, if you did not specify a projection, the application used a Non-Earth Coordinate System. Safe Software's UT build for the 8.5 version set a default (0,0)(10,10) bounds for Non-Earth Coordinate Systems, when it should have used the bounds of the data instead.</p> <p>We made a change in UT to work around this issue for the 8.5.1 patch. When you are translating a file to .TAB or .MIF format and do not specify a coordinate system, we use the bounds of the data, which corrects this issue.</p>

## WFS/WMS Issues

The following Web Services issues have been resolved:

Issue #	Description/Resolution
T18401	<p>When downloading WFS layers in GML2 image format, an error results due to incorrect parsing of WFS GetCapabilities on the server.</p> <p><b>Resolution:</b> We have corrected the way WFS GetCapabilities are parsed for WFS layers. You can now download WFS layers with GML2 images more successfully.</p>
T19166	<p>If the Map window contains a seamless layer and a WMS layer and you try and access the Layer Control dialog box, the application closes suddenly.</p> <p><b>Resolution:</b> We have corrected this issue to prevent this sudden closure from occurring.</p>

Issue #	Description/Resolution
T19547	<p>When an Envinosa WFS server issues a service exception, the application creates an empty table.</p> <p><b>Resolution:</b> MapInfo Professional's WFS client did not recognize service exceptions issued by the Envinosa WFS service because no content type was specified. The client was therefore treating the returned information as empty data rather than an exception. This has been corrected.</p>
T19715	<p>No error message displayed when the server timed out.</p> <p><b>Resolution:</b> We have added an error message to indicate that the server has timed out when you attempt to test a connection using the Test URL button.</p>
T20181	<p>There was an issue when you tried to access Non-Earth Tables using a bounded coordinate system string. If you tried to save a WMS layer in an unsupported projection as a .TAB file and tried to add a Non-Earth entry to the PRJ file with bounds, errors would result.</p> <p><b>Resolution:</b> We have changed the application to write the Non-Earth coordinate system clause with bounds and modified the system to retrieve these bounds from the WMS server when possible. This allows you to retrieve WMS layers in Non-Earth format and still use them in your maps.</p>
T20354	<p>An error occurred when you opened a WFS Table using a Row Filter.</p> <p><b>Resolution:</b> We corrected a coordinate system initialization issue that prevented the application from being able to open the WFS layer. This should prevent this issue from occurring again.</p>
T20830	<p>Unable to get SSL3 secure https channel using client certificates to access WMS server.</p> <p><b>Resolution:</b> MapInfo Professional's WMS and WFS clients now support Secure Socket Layer (SSL)-protected sites that require users to select a client certificate or require user confirmation to bypass server certificate issues such as invalid certificate authority, invalid certificate common name (CN), or expired certificates.</p>
T20973	<p>WFS Server causes the application to lose focus when processing DescribeFeatureType.</p> <p><b>Resolution:</b> We have changed the way we processed the XML that underlies the DescribeFeatureType to resolve this issue. You can now open WFS layers that contain this feature without error.</p>