



MapInfo Professional 8.5 Release Notes

These Release Notes provide information on last minute enhancements and updates we have made to MapInfo Professional 8.5. Please refer to the table of contents below for topics you may be interested in.

Sections in this Document:

- ♦ **Resolving Geocoding Issues** 2
- ♦ **Google Earth Issue Resolved** 2
- ♦ **Database Handling Suggestion**..... 2
- ♦ **Printing Recommendations**..... 3

Resolving Geocoding Issues

Inconsistency Reported

You may notice an inconsistency when you geocode using the geocoding server because MapMarker always indicates unique close matches, but Envinsa does not.

When you perform a geocode using the server in **Automatic Mode** and select **Do Not Match** for multiple matches, you should get the same results as when you select **Interactive Mode** and choose **Ignore** for each close match. When you are using an Envinsa server, and select the maximum candidates to 1, this does not occur.

To prevent this discrepancy, we recommend that Envinsa users not set MaxCandidates to 1 when performing a geocode in Interactive mode.

Geocoding Column in the Advanced Output Tab Important

When you are using the geocoding server and you set the Advanced Output tab entries, make sure you specify a valid geocoding field. When you do not, the geocoding server creates the points but does not update the specified output field.

Google Earth Issue Resolved

The new MultiGeometry tag in Google Earth enables KML images that are composed of more than one boundary to be grouped into one. For example, the state of California used to be made of 8 separate polygons that were listed separately in the Google Earth Places list. A new tag allows developers to group these related polygons into one name in the Places list.

Database Handling Suggestion

If you are working with a live, remote table that contains deleted records, MapInfo Professional only geocodes until it gets to the first deleted record. You can prevent this by refreshing the table before you begin geocoding. When you refresh the table, the deleted record is packed so the issue does not occur.

Printing Recommendations

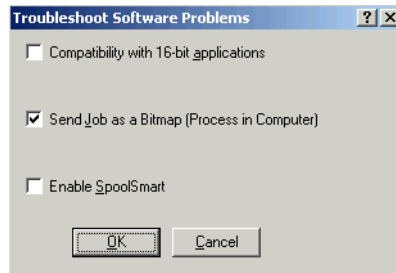
Enhancing Large Format Plotter Output

Some large format plotter drivers we tested (including the HP DesignJet 4000PS plotter) have additional options for enhancing output and for troubleshooting software problems.

To enhance your large output image we suggest you experiment with these options.

For the HP DesignJet 4000PS plotter you can access these options:

1. From the **File** menu, select **Print** to display the **Print** dialog box.
2. Click **Properties** to display the **Properties** dialog box.
3. Click the **Services** tab and click **Troubleshoot Software Problems**. The **Troubleshoot Software Problems** dialog box displays.



4. Click **Send Job as a Bitmap (Process in Computer)**.
5. Click **OK** to save this setting.

This may help in printing very large raster and/or grid images when the map is at a high resolution and you are printing to large paper sizes (for example, greater than 28000 pixels in any direction or 42 x 60 inches at 600 dpi). This is particularly recommended when you are using the Enhanced Metafile output method for printing.

We also found that some HP printer drivers also had this option as an advanced printer feature. Check the **Advanced** tab and enable the option, **Send Job as a Raster** to produce similar results.

Note: Using this setting will likely make the printing process slower, but your output will be more reliable.

Enhancing Translucent Rasters

This is a collection of recommendations for printing semi-translucent raster layers from MapInfo Professional:

- HP Plotter: Use a HPGL2/RTL driver and not a post script driver
- Select the **Print using Enhanced Metafile** option in the **Options > Preferences > Output Settings**
- For best results select the **Use ROP Method to Display Transparent Rasters** in the **Advanced Printing Options** dialog box. Click the **Advanced** button in the **Print** dialog box to see this option.
- Make sure there is plenty of temporary disk space
- Spool the print jobs locally instead of at the plotter

Note: See instructions for spooling print jobs locally in the MapInfo Professional *Printing Guide*, which is available in the Documentation folder of your installation directory.